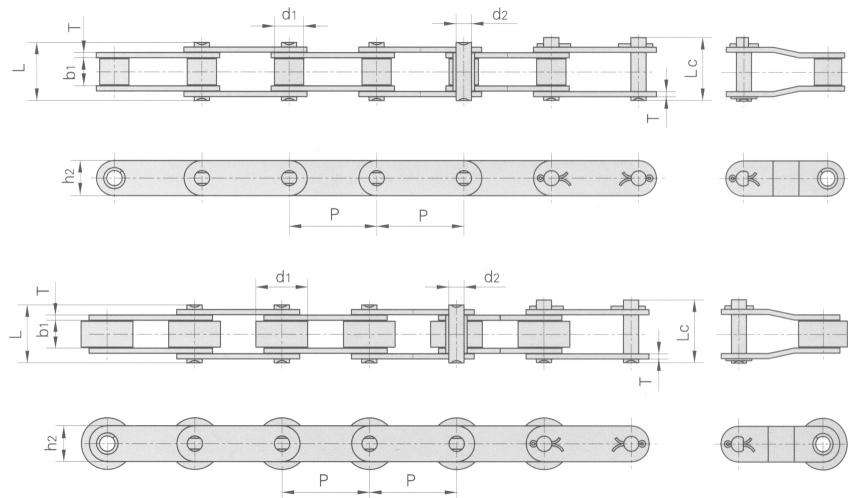




# CONVEYOR CHAINS

### Double Pitch Conveyor Chains

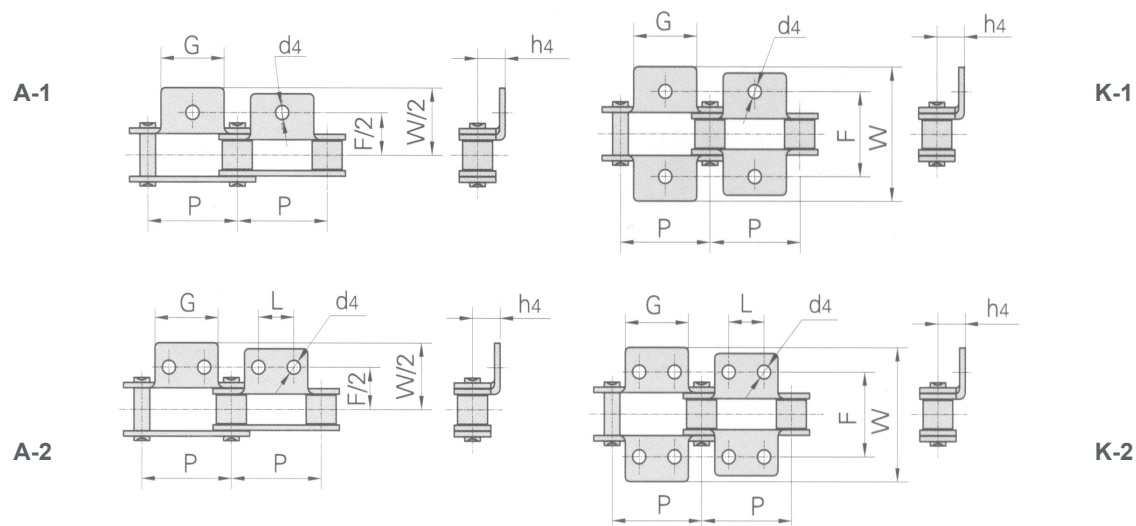


- We are manufacturers of engineering and special chains, for every type of industry.

- In the chain market, our products are of the highest quality, and are manufactured under the international standards ANSI B29.1 M-2002 (DIN 3183) and ISO 606.

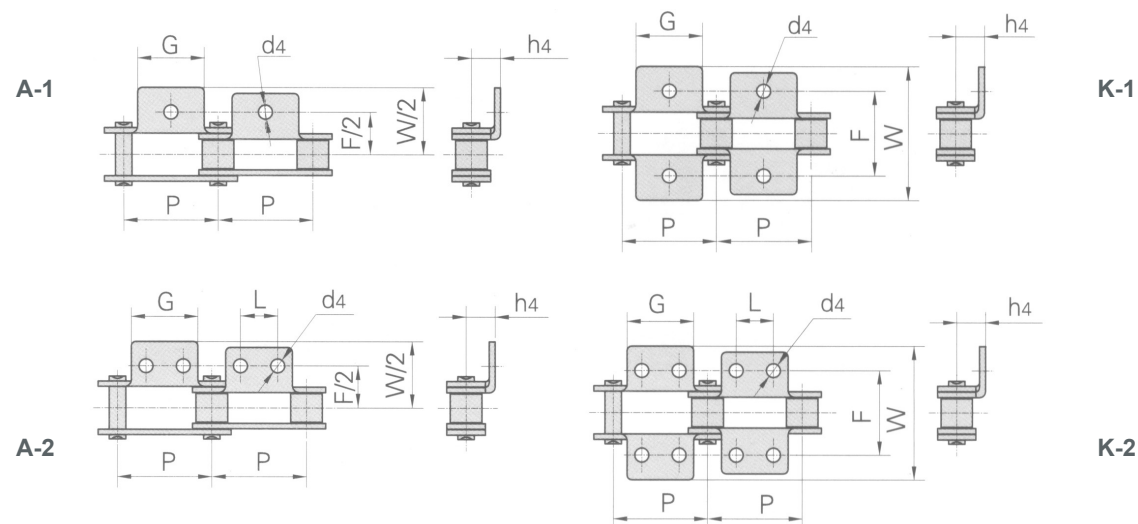
RAK CHAIN NO.	PITCH	ROLLER DIAMETER	WIDTH BETWEEN INNER PLATES	PIN DIAMETER	PIN LENGTH		INNER PLATE DEPTH	PLATE THICKNESS	AVERAGE TENSILE STRENGTH	WEIGHT PER METER
	P	d1 max	b1 min	d2 max	L max	Lc max	h2 max	T max		
	MM	MM	MM	MM	MM	MM	MM	MM	LB	KG/M
C2040 C2042	25.40	7.95 15.88	7.85	3.96	16.6	17.8	12.0	1.50	3205	0.50 0.48
C2040H	25.40	7.95	7.85	3.96	18.8	19.9	12.0	2.03	3205	0.65
C2050 C2052	31.75	10.16 19.05	9.40	5.08	20.7	22.2	15.0	2.03	5045	0.78 1.27
C2060 C2062	38.10	11.91 22.23	12.57	5.94	25.9	27.7	18.0	2.42	7227	1.12 1.61
C2060H C2062H	38.10	11.91 22.23	12.57	5.94	29.2	31.6	18.0	3.25	7227	1.44 2.07
C2080 C2082	50.80	15.88 28.58	15.75	7.92	32.7	36.5	24.0	3.25	12886	2.08 3.12
C2100 C2102	63.50	19.05 39.67	18.90	9.53	40.4	44.7	30.0	4.00	20114	3.01 4.83
C2100H C2102H	63.50	19.05 39.67	18.90	9.53	43.6	46.9	30.0	4.80	20114	3.56 5.38
C2120 C2122	76.20	22.23 44.45	25.22	11.10	53.5	57.5	35.7	5.60	28864	4.66 8.26
C2160 C2162	101.60	28.58 57.15	31.75	14.27	64.8	69.6	47.8	6.40	51545	8.15 13.00
C2160H C2162H	101.60	28.58 57.15	31.75	14.27	68.2	73.0	47.8	7.20	51545	9.06 13.84

## Double Pitch Conveyor Chain With Attachments



RAK CHAIN NO.	P	G	L	F	W	h4	d4
	MM	MM	MM	MM	MM	MM	MM
C208AF1	25.40	19.0		25.7	38.3	8.8	4.1
C2042F1	25.40	19.0		25.4	40.0	9.0	5.2
C2040A1F3	25.40	19.0		25.4	38.2	19.8	5.3
C2042A1F4	25.40	19.0		25.4	39.6	9.1	5.0
C2040A2F1	25.40	19.0	9.00	25.4	38.4	9.0	5.2
C2042HK1F1	25.40	19.0		47.0	60.0	9.1	7.0
C2050A1F6	31.75	23.8		31.8	49.0	11.4	6.3
C2052A2F1	31.75	19.0	11.90	31.8	49.0	11.1	6.0
C2052A2F2	31.75	19.0	15.88	31.8	49.0	11.1	5.5
C2052A2F3	31.75	25.8	12.70	31.8	49.2	11.1	4.8
C2060K1F1	38.10	28.6		42.9	68.0	14.7	8.5
C2062HK1F5	38.10	28.6		42.9	67.8	14.7	7.9
C2062A1F13	38.10	30.0		70.2	98.0	14.7	8.5
C2062A2F6	38.10	28.6	14.30	42.9	67.8	14.7	6.0
C2062K2F7	38.10	28.6	14.30	42.9	67.8	14.7	6.5
C2060HF3A2	38.10	28.6	14.30	42.9	67.8	14.7	5.2
C2062HF15	38.10	28.6	14.30	42.9	67.8	14.7	M5

## Double Pitch Conveyor Chain With Attachments



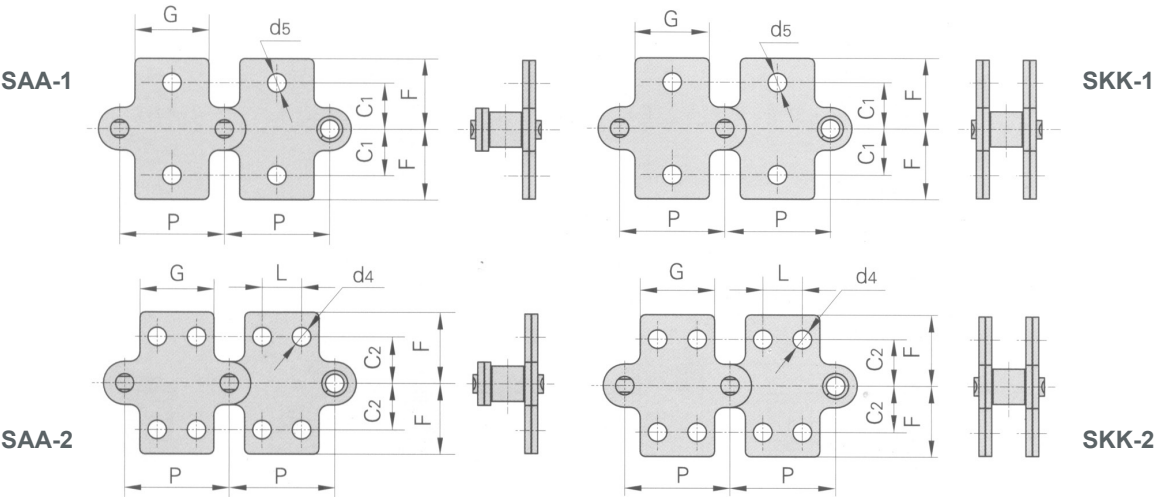
- We are manufacturers of engineering and special chains, for every type of industry.

- In the chain market, our products are of the highest quality, and are manufactured under the international standards ANSI B29.1 M-2002 (DIN 3183) and ISO 606.

RAK CHAIN NO.	P	G	L	F	W	h4	d4
	MM	MM	MM	MM	MM	MM	MM
C2060HK1F	38.10	28.6		42.9	67.8	14.7	8.0
C2062HA1F4	38.10	20.0		45.8	65.8	9.0	6.8
C2062HK1F5	38.10	28.6		42.9	67.8	14.7	7.9
C2062HA1F7	38.10	28.6		42.9	67.8	14.7	5.2
C2060HA1F12	38.10	28.0		43.4	61.8	13.9	6.6
C2060HK2F3	38.10	28.6	14.30	42.9	64.8	14.7	5.0
C2062HK2F4	38.10	28.6	14.30	42.9	56.4	14.7	5.2
C2062HK2F5	38.10	28.6	14.30	55.6	76.0	11.1	5.5
C216AF3	50.80	39.0	19.10	59.0	78.5	23.0	7.0
C2082A2F1	50.80	39.0	19.00	58.0	82.0	21.5	7.0
C2082A2F2	50.80	39.0	19.00	58.0	82.0	21.5	10.0
C2082K2F5	50.80	38.1	19.10	120.0	140.0	19.1	6.8
C2080HF	50.80	38.1	19.10	55.6	75.2	17.8	10.0
C2082HK1F5	50.80	38.1		55.6	79.6	19.1	8.0
C2082HA1F6	50.80	38.1		55.6	77.8	19.1	10.0



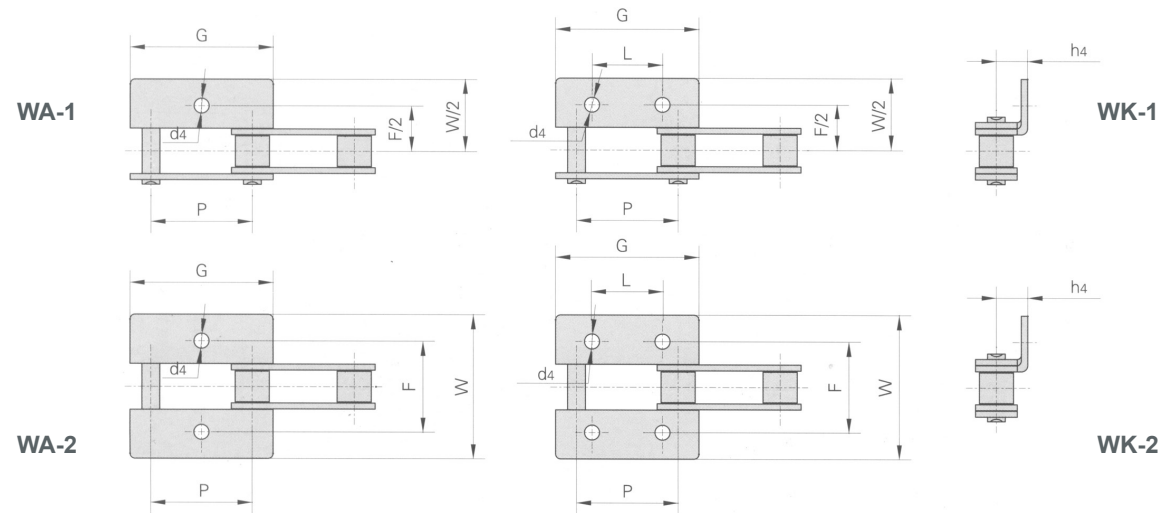
Double Pitch Conveyor Chain With Attachments



RAK CHAIN NO.	P	G	L	C1	C2	F	d4	d5
	MM	MM	MM	MM	MM	MM	MM	
C2040 C2042	25.40	19.1	9.5	11.1	13.5	20.5	3.4	5.5
C2050 C2052	31.75	23.8	11.9	14.3	15.9	25.0	5.5	6.6
C2060 C2062	38.10	28.6	14.3	17.5	19.1	32.9	5.5	9.2
C2060H C2062H	38.10	28.6	14.3	17.5	19.1	32.9	5.5	9.2
C2080 C2082	50.80	38.1	19.1	22.2	25.4	43.5	6.6	11.0
C2080H C2082H	50.80	38.1	19.1	22.2	25.4	43.5	6.6	11.0



### Double Pitch Conveyor Chain With Attachments

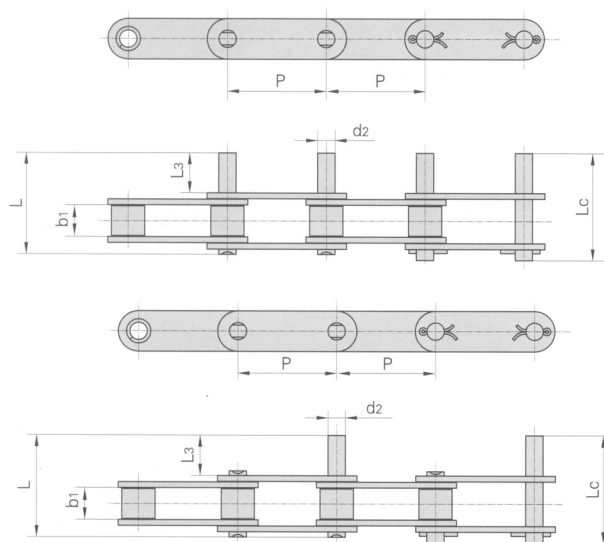


RAK CHAIN NO.	P	G	L	F	W	h4	d4
	MM	MM	MM	MM	MM	MM	MM
C2040K1F2	25.40	37.0	9.5	62.0	110.0	9.1	7.0
C2042HF1	25.40	37.4		42.5	65.5	6.0	7.0
C2052WA1F2	31.75	46.8		76.2	95.2	7.5	7.1
C2062WA2F1	38.10	56.1	38.1	42.9	67.8	14.7	6.5
C2062WK2F2	38.10	56.1	38.1	43.0	68.0	14.7	7.8
C2062HWA1F4	38.10	55.6	38.1	76.2	95.3	8.7	7.1
C216ALF5	50.80	74.8	44.3	62.2	88.0	19.1	7.0
C2082F12	50.80	74.8	50.8	55.6	88.0	19.1	8.4
C2082F24	50.80	74.8	56.8	55.6	87.8	19.1	6.8
C2082HF1A2	50.80	74.8	30.0	60.0	84.0	18.0	8.5

- We are manufacturers of engineering and special chains, for every type of industry.

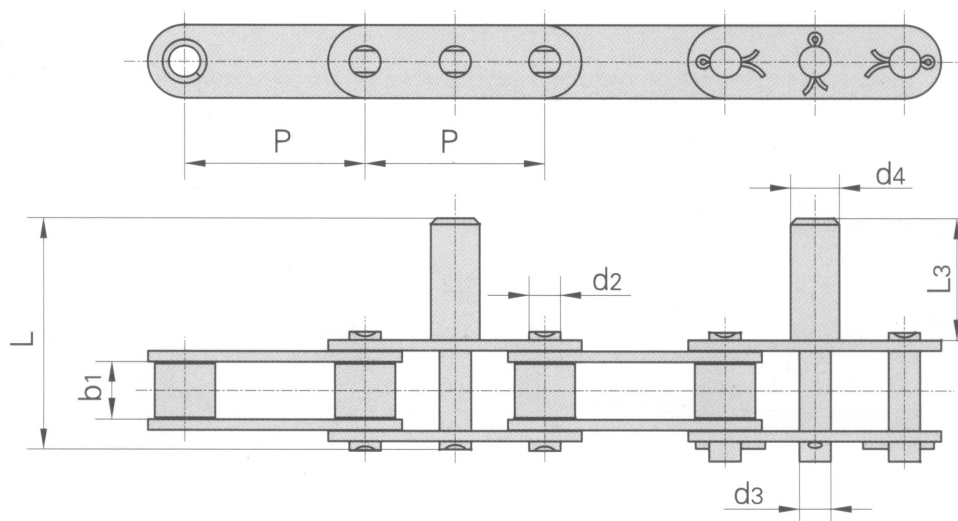
- In the chain market, our products are of the highest quality, and are manufactured under the international standards ANSI B29.1 M-2002 (DIN 3183) and ISO 606.

## Double Pitch Conveyor Chain With Extended Pins



RAK CHAIN NO.	P	b1	d2	L3	L	Lc
	MM	MM	MM	MM	MM	MM
C2040 C2042	25.40	7.85	3.96	9.5	25.1	26.2
C2050 C2052	31.75	9.40	5.08	11.9	31.3	33.1
C2060 C2062	38.10	12.57	5.94	14.3	38.6	40.6
C2060H C2062H	38.10	12.57	5.94	14.3	42.0	43.8
C2080 C2082	50.80	15.75	7.92	19.1	50.3	53.3
C2080H C2082H	50.80	15.75	7.92	19.1	53.5	55.0
C2100 C2102	63.50	18.90	9.53	23.8	61.8	66.1
C2120H C2120H	63.50	18.90	9.53	23.8	65.0	68.3
C2120H C2122H	76.20	25.22	11.10	28.6	79.6	83.6
C2160H C2162H	101.6	31.75	14.27	38.1	103.0	107.8

### Double Pitch Conveyor Chain With Extended Pins

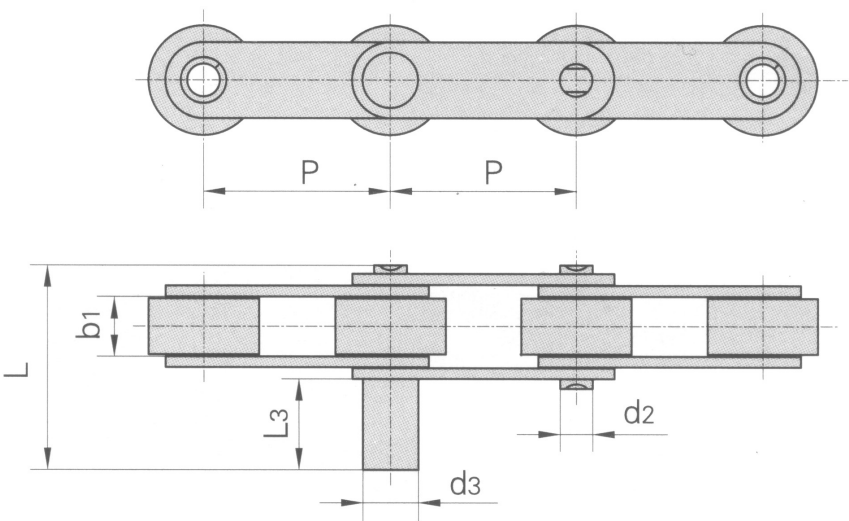


RAK CHAIN NO.	P	b1	d2	d3	d4	L3	L
	MM	MM	MM	MM	MM	MM	MM
C2052F2	31.75	9.40	5.08	6.00	7.0	20.0	39.8
C2052F14	31.75	9.40	5.08	6.00	7.0	21.0	40.4
C2062-D38	38.10	12.57	5.94	5.94	11.1	24.2	48.6
C2062-D39	38.10	12.57	5.94	5.94	13.3	32.2	56.6
C212AHL-D4	38.10	12.57	5.94	5.94	8.0	25.0	53.0
C212AHF3	38.10	12.57	5.94	8.08	10.0	35.0	63.0
C212AHF7	38.10	12.57	5.94	5.94	12.7	41.2	69.2
C212AHF8	38.10	12.57	5.94	8.00	10.0	35.0	63.8
C2060HF9	38.10	12.57	5.94	7.95	12.7	41.3	69.3
C2060HF10	38.10	12.57	5.94	7.70	14.3	41.3	69.3
C2060H-D23	38.10	12.57	5.94	8.80	12.7	41.3	69.3
C2060H-D24	38.10	12.57	5.94	7.95	12.7	44.8	65.6
C2060H-D31	38.10	12.57	5.94	7.95	16.0	45.0	73.0
C2062H-D41	38.10	12.57	5.94	9.53	9.5	22.2	50.0

- We are manufacturers of engineering and special chains, for every type of industry.

- In the chain market, our products are of the highest quality, and are manufactured under the international standards ANSI B29.1 M-2002 (DIN 3183) and ISO 606.

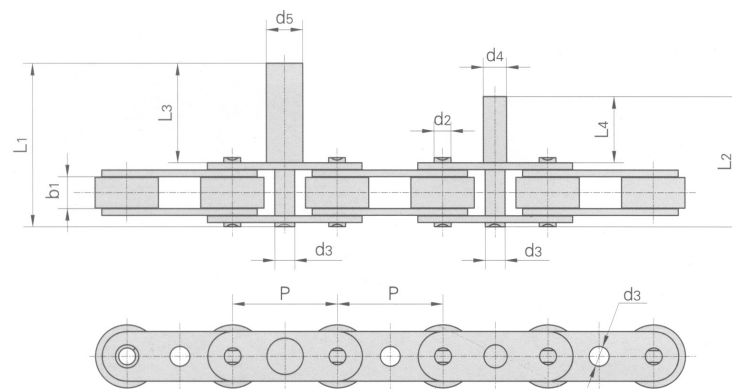
Double Pitch Conveyor Chain With Extended Pins



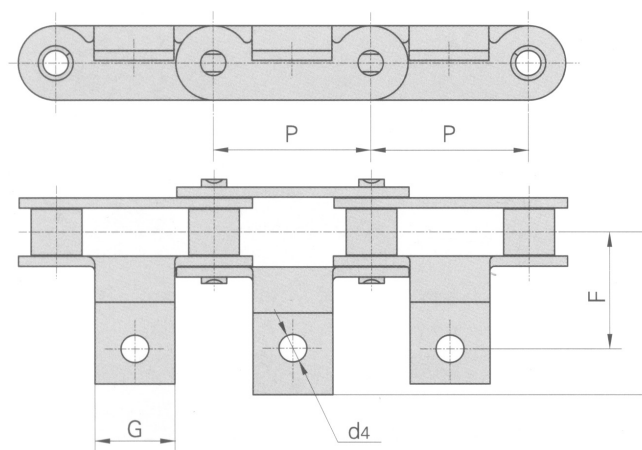
RAK CHAIN NO.	P	b1	d2	d3	L3	L
	MM	MM	MM	MM	MM	MM
C2052DF1	31.75	9.40	5.08	7.50	14.5	33.6
C210AF4	31.75	9.40	5.08	11.00	34.00	53.7
C2052-D4	31.75	9.40	5.08	6.00	32.40	52.0
C2050-D5	31.75	9.40	5.08	8.00	40.00	59.7
C212AHL-D4	38.10	12.57	5.94	8.00	25.00	53.0
C2062-D6	38.10	12.57	5.94	12.00	25.00	49.7

RAK

### Double Pitch Conveyor Chain With Extended Pins



RAK CHAIN NO.	P	b1	d2	d4	d5	L3	L1	L4	L2
	MM	MM	MM	MM	MM	MM	MM	MM	MM
C2052F1	31.75	9.4	6.0	7.0	11.0	30.0	49.8	20.0	39.8

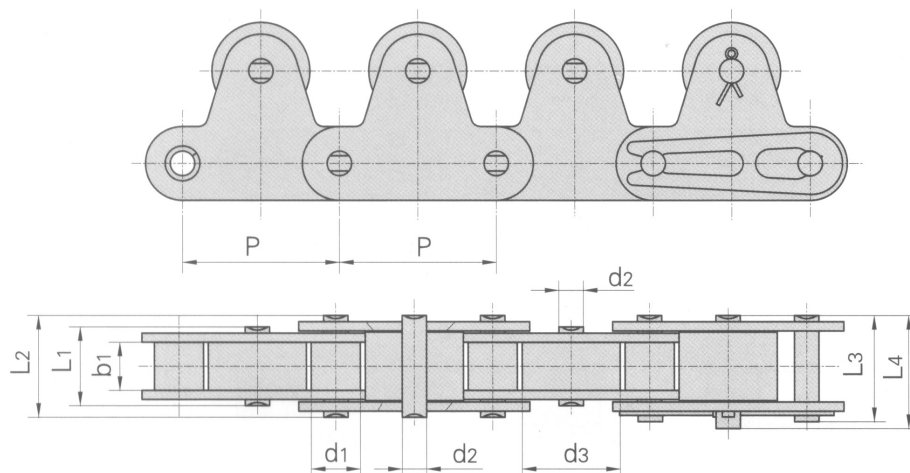


RAK CHAIN NO.	P	G	F	W	d4
	MM	MM	MM	MM	MM
C2050A6	31.75	16.0	23.4	32.8	5.5

- We are manufacturers of engineering and special chains, for every type of industry.

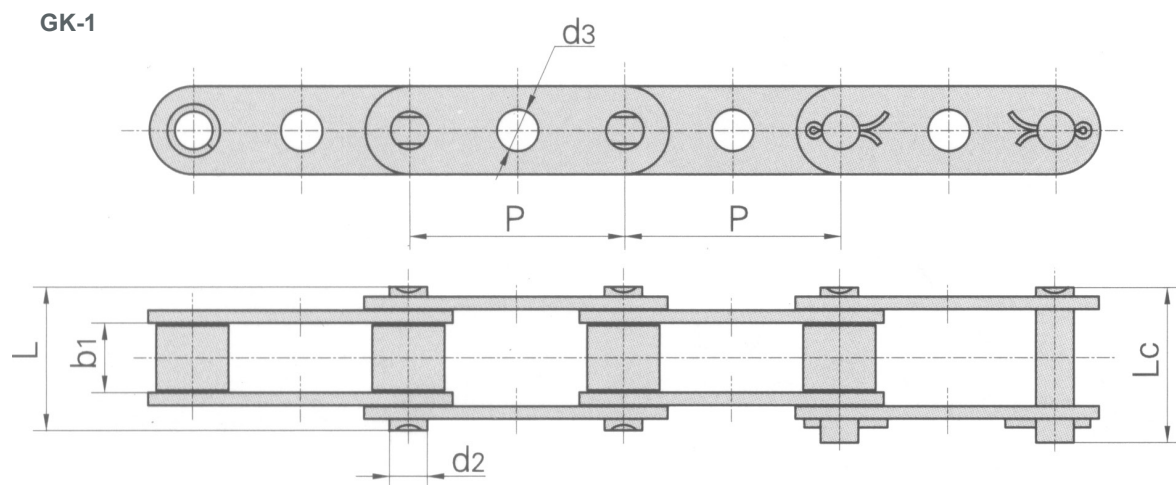
- In the chain market, our products are of the highest quality, and are manufactured under the international standards ANSI B29.1 M-2002 (DIN 3183) and ISO 606.

## Double Pitch Conveyor Chain With Special Attachments



RAK CHAIN NO.	PITCH	ROLLER DIAMETER		WIDTH BETWEEN INNER PLATES	PIN DIAMETER	PIN LENGTH				AVERAGE TENSILE STRENGTH	WEIGHT PER METER
	P	d1 max	d3 max	b1 min	d2 max	L1 max	L2 max	L3 max	L4 max		
	MM	MM	MM	MM	MM	MM	MM	MM	MM	LB	KG/M
C2040-1LTR	25.40	7.95	15.88	7.85	3.96	13.5	16.6	17.8	18.8	3205	1.15
C2050-1LTR	31.75	10.16	19.05	9.40	5.08	16.5	20.7	22.2	23.3	5045	1.85
C2060-1LTR	38.10	11.91	22.23	12.57	5.94	21.0	25.9	27.7	28.3	7227	3.50
C2080-1LTR	50.80	15.88	28.58	15.57	7.92	26.2	32.7	35.0	36.5	12886	5.50
C2100-1LTR	63.50	19.05	39.67	18.90	9.53	32.3	40.4	44.7	44.7	20114	8.70

### Double Pitch Conveyor Chain With Special Attachments



RAK CHAIN NO.	P	b1	d2	D3	L	Lc
	MM	MM	MM	MM	MM	MM
C2040 C2042	25.40	7.85	3.96	4.1	16.6	18.8
C2050 C2052	31.75	9.40	5.08	5.1	20.7	23.3
C2060 C2062	38.10	12.57	5.94	6.1	25.9	28.3
C2060H C2062H	38.10	12.57	5.94	6.1	29.2	31.6
C2080 C2082	50.80	15.75	7.92	8.1	32.7	36.5
C2080H C2082H	50.80	15.75	7.92	8.1	36.2	39.4
C2100 C2102	63.50	18.90	9.53	10.1	40.4	44.7
C2100H C2102H	63.50	18.90	9.53	10.1	43.6	46.9

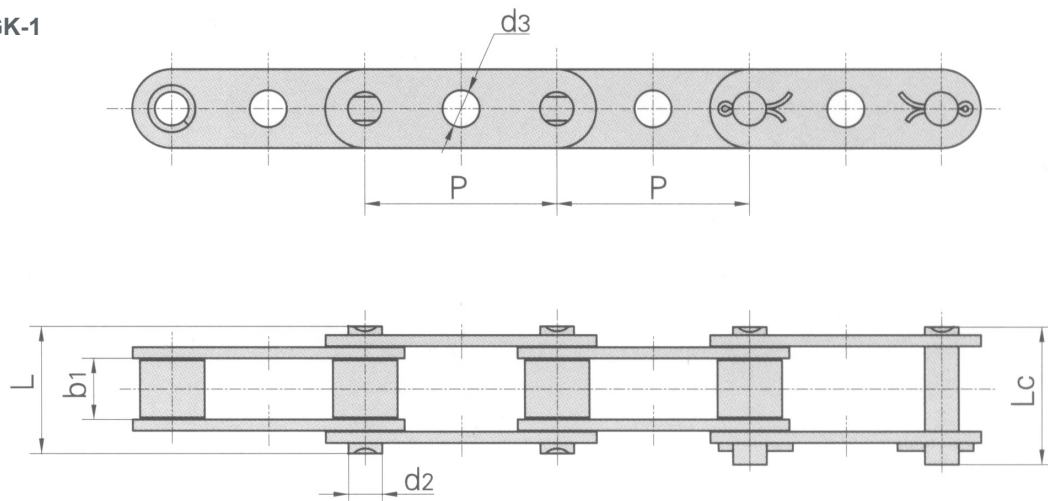
- We are manufacturers of engineering and special chains, for every type of industry.

- In the chain market, our products are of the highest quality, and are manufactured under the international standards ANSI B29.1 M-2002 (DIN 3183) and ISO 606.



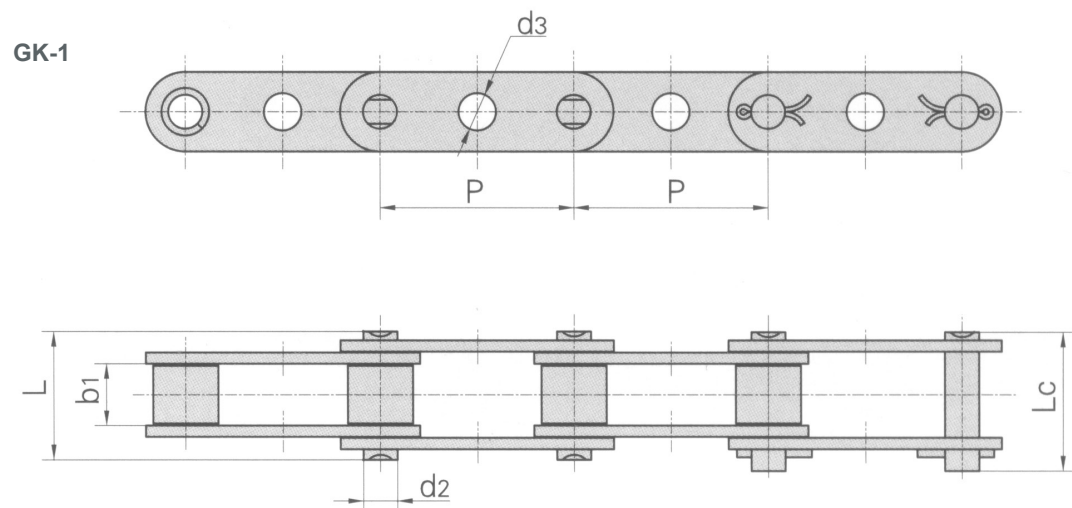
## Double Pitch Conveyor Chain With Special Attachments

GK-1



RAK CHAIN NO.	P	b1	d2	d3	L	Lc
	MM	MM	MM	MM	MM	MM
C2050GKF2	31.75	9.40	5.08	8.1	20.7	22.2
C2050GKF3	31.75	9.40	5.08	8.1	20.7	22.2
C2050GKF4	31.75	9.40	5.08	7.0	20.7	22.2
C2050GKF5	31.75	9.40	5.08	7.1	20.7	22.2
C2050GKF6	31.75	9.40	5.08	6.0	20.7	22.2
C2050GKF7	31.75	9.40	5.08	6.1	20.7	22.2
C2050GKF8	31.75	9.40	5.08	8.3	20.7	22.2
C2050HGK	31.75	9.40	5.08	8.2	22.1	23.4
C2050HGKF1	31.75	9.40	5.08	7.0	22.1	23.4
C2052HGKF3	31.75	9.40	5.08	6.0	22.1	23.4
C2050HGKF4	31.75	9.40	5.08	8.1	22.1	23.4
C2060GKF1	38.10	12.57	5.94	8.0	25.9	22.7
C2060GKF2	38.10	12.57	5.94	8.1	25.9	27.7

### Double Pitch Conveyor Chain With Special Attachments

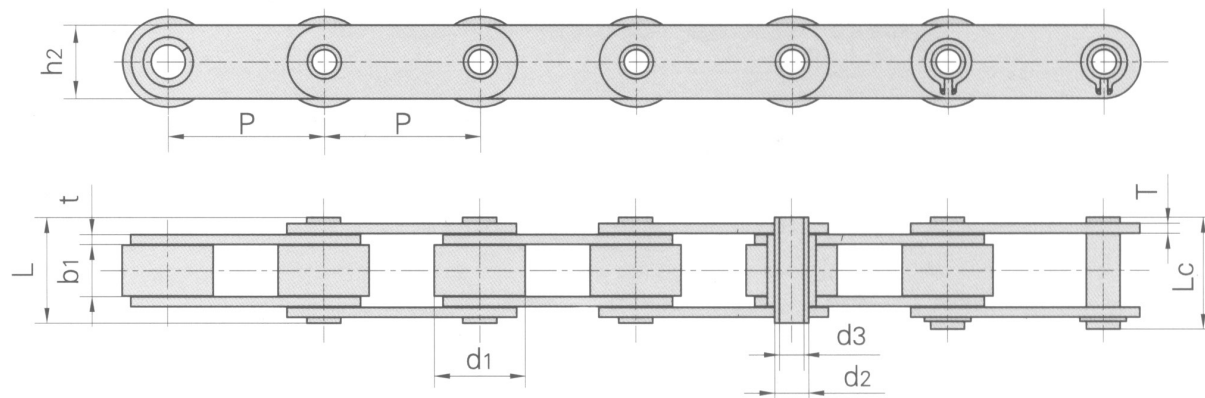


RAK CHAIN NO.	P	b1	d2	d3	L	Lc
	MM	MM	MM	MM	MM	MM
C2060GKF3	38.10	12.57	5.94	6.2	25.9	27.7
C2060GKF8	38.10	12.57	5.94	8.8	25.9	27.7
C2060HGKF3	38.10	12.57	5.94	8.2	29.2	31.6
C2060HGKF4	38.10	12.57	5.94	8.3	29.2	31.6
C2060HGKF5	38.10	12.57	5.94	6.0	29.2	31.6
C2060HGKF6	38.10	12.57	5.94	8.3	29.2	31.6
C2060HGKF7	38.10	12.57	5.94	10.0	29.2	31.6
C2060HGKF10	38.10	12.57	5.94	8.8	29.2	31.6
C2080HGKF2	50.80	15.75	7.92	7.9	36.2	39.4
C2080HGKF6	50.80	15.75	7.92	11.0	36.2	39.4
C220AGK	63.50	18.90	9.53	8.0	40.4	44.7
C208BGKF1	25.40	7.75	4.45	6.0	16.7	18.2

- We are manufacturers of engineering and special chains, for every type of industry.

- In the chain market, our products are of the highest quality, and are manufactured under the international standards ANSI B29.1 M-2002 (DIN 3183) and ISO 606.

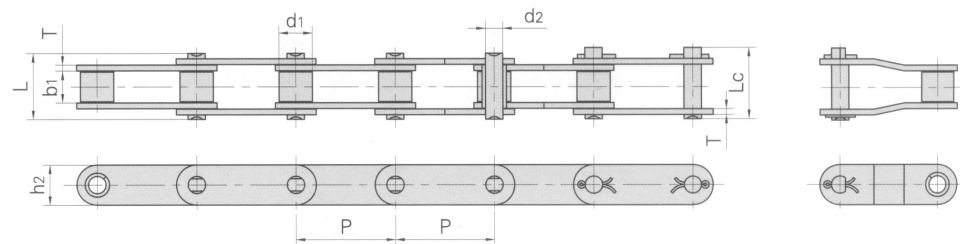
## Double Pitch Hollow Pin Conveyor Chains



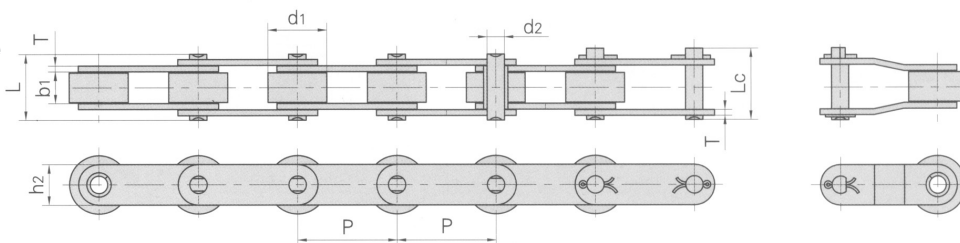
RAK CHAIN NO.	PITCH	ROLLER DIAMETER	WIDTH BETWEEN INNER PLATES	PIN DIAMETER		PIN LENGTH		INNER PLATE DEPTH	PLATE THICKNESS	AVERAGE TENSILE STRENGTH	WEIGHT PER METER
	P	d1 max	b1 min	d2 max	d3 min	L max	Lc max	h2 max	t/T max		
	MM	MM	MM	MM	MM	MM	MM	MM	MM	LB	KG/M
C2040HP	25.400	7.95	7.85	5.63	4.00	16.5	17.6	12.00	1.50	2500	0.46
C2040HPF1	25.400	7.95	7.85	5.63	M4	16.5	17.6	12.0	1.5	2045	0.44
C2050HP	31.750	10.16	9.40	7.22	5.12	20.5	21.8	15.00	2.03	4636	0.76
C2060HP	38.100	11.91	12.70	8.31	6.00	25.8	26.8	17.00	2.42	5455	1.02
C2042HP	25.40	15.88	7.85	5.63	4.00	16.5	17.6	12.00	1.50	2500	0.78
C2052HP	31.75	19.05	9.53	7.22	5.12	20.5	21.8	15.00	2.03	4636	1.25
C2062HP	38.10	22.23	12.70	8.31	6.00	25.8	26.8	17.00	2.42	5455	1.72
C2082HP	50.80	28.58	15.75	11.40	8.05	32.4	33.8	24.00	3.25	11364	2.82
C2042H-HP	25.40	15.88	7.85	5.36	4.00	18.8	19.9	12.00	2.03	2500	0.95
C2052HPF1	31.75	19.05	9.40	7.03	5.12	20.0	21.5	15.30	1.85	3409	1.21
C2052HPF3	31.75	19.05	9.53	7.02	5.13	20.1	21.6	15.09	2.03	4455	1.20
C2052H-HP	31.75	19.05	9.53	7.22	5.12	22.1	23.4	15.00	2.42	4545	1.44
C2062H-HP	38.10	22.23	12.70	8.31	6.00	29.2	30.2	17.00	3.25	5455	1.99
C2082H-HP	50.80	28.58	15.75	11.4	8.05	35.7	37.0	24.00	4.00	11364	3.34

### Double Pitch Stainless Steel Conveyor Chains

Small roller type



Large roller type



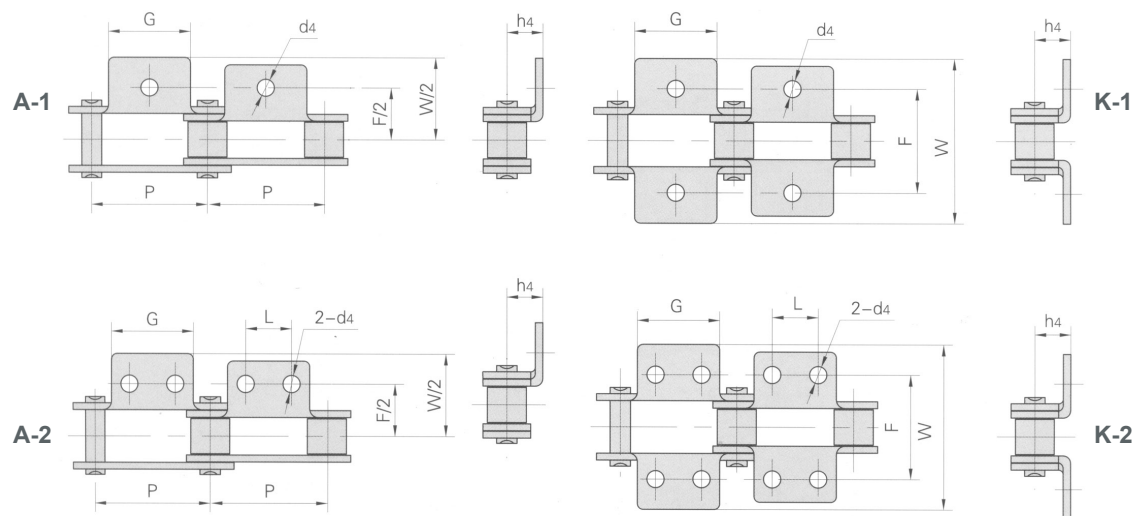
RAK CHAIN NO.	PITCH	ROLLER DIAMETER	WIDTH BETWEEN INNER PLATES	PIN DIAMETER	PIN LENGTH		INNER PLATE DEPTH	PLATE THICKNESS	AVERAGE TENSILE STRENGTH	WEIGHT PER METER
	P	d1 max	b1 min	d2 max	L max	Lc max	h2 max	t/T max		
	MM	MM	MM	MM	MM	MM	MM	MM	LB	KG/M
C2040SS C2042SS	25.40	7.95 15.88	7.85	3.96	16.6	17.8	12.0	1.50	2182	0.51 0.85
C2040HSS	25.40	7.95	7.85	3.96	18.8	19.9	12.0	2.03	2182	0.66
C208BSS C208BLSS	25.40	8.51 15.88	7.75	4.45	16.7	18.2	11.8	1.60	2727	0.56 0.90
C2050SS C2052SS	31.75	10.16 19.05	9.40	7.22 5.08	20.7	22.2	15.0	2.03	3455	0.79 1.29
C2060SS C2062SS	38.10	11.91 22.23	12.57	5.94	25.9	27.7	18.0	2.42	4932	1.13 1.63
C2060HSS C2062HSS	38.10	11.91 22.23	12.57	5.94	29.2	31.6	18.0	3.25	4932	1.46 2.10
C2080SS C2082SS	50.80	15.88 28.58	15.75	7.92	32.7	36.5	24.0	3.25	8841	2.11 3.16
C2080HSS C2082HSS	50.80	15.88 28.58	15.75	7.92	36.2	39.4	24.0	4.00	8841	2.57 3.63
C2100SS C2102SS	63.50	19.05 39.67	18.90	9.53	40.4	44.7	30.0	4.00	13636	3.05 4.89
C2100HSS C2102HSS	63.50	19.05 39.67	18.90	9.53	43.6	46.9	30.0	4.80	13636	3.61 5.45

- We are manufacturers of engineering and special chains, for every type of industry.

- In the chain market, our products are of the highest quality, and are manufactured under the international standards ANSI B29.1 M-2002 (DIN 3183) and ISO 606.

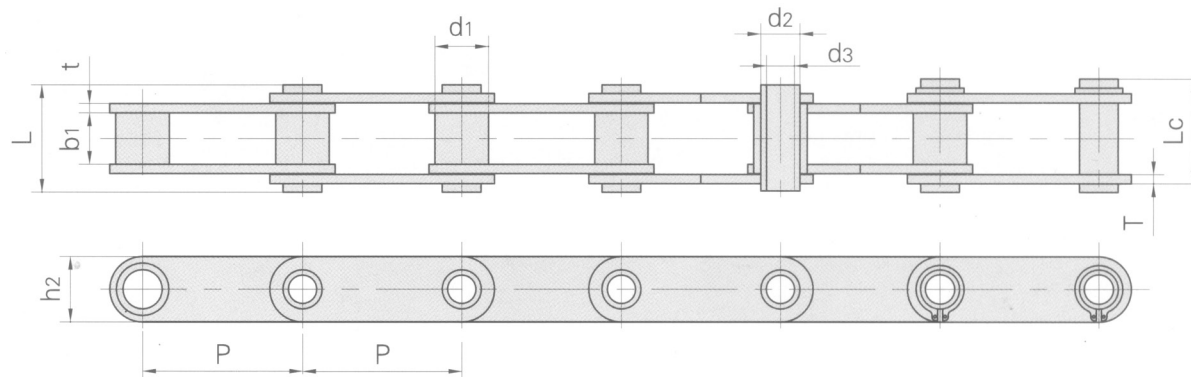
# Conveyor Chains

## Double Pitch Stainless Steel Conveyor Chains With Attachments



RAK CHAIN NO.	P	G	L	F	W	h4	d4
	MM	MM	MM	MM	MM	MM	MM
C2040SS C2042SS	25.4	19.1	9.5	25.4	39.6	9.1	3.4
C208BSS C208BLSS	25.4	23.2	12.7	25.4	39.6	9.1	4.5
C2050SS C2052SS	31.75	23.8	11.9	31.8	49.0	11.1	5.5
C2060SS C2062SS	38.1	28.6	14.3	42.9	67.8	14.7	5.5
C2060HSS C2062HSS	38.1	28.6	14.3	42.9	67.8	14.7	5.5
C2080SS C2082SS	50.8	38.1	19.1	55.6	87.8	19.1	6.8
C2080HSS C2082HSS	50.8	38.1	19.1	55.6	87.8	19.1	6.8
C2100SS C2102SS	63.5	47.6	23.8	66.6	107.5	23.4	9.2
C2100HSS C2102HSS	63.5	47.6	23.8	66.6	107.5	23.4	9.2

### Double Pitch Stainless Steel Hollow Pin Conveyor Chains

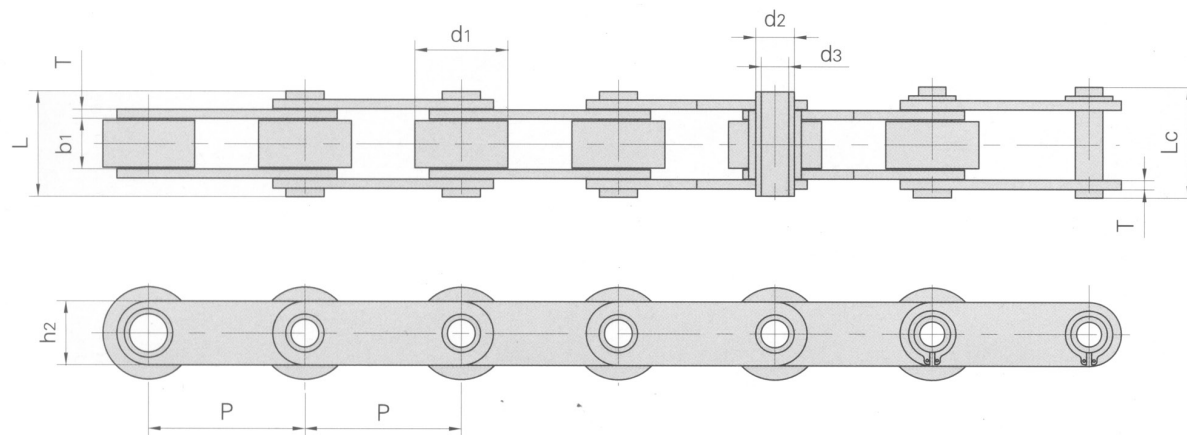


RAK CHAIN NO.	PITCH	BUSH DIAMETER	WIDTH BETWEEN INNER PLATES	PIN DIAMETER		PIN LENGTH		INNER PLATE DEPTH	PLATE THICKNESS	BREAKING LOAD	WEIGHT PER METER	TYPE
	P	d1 max	b1 min	d2 max	d3 min	L max	Lc max	h2 max	t/T max			
	MM	MM	MM	MM	MM	MM	MM	MM	MM	LB	KG/M	
C2040HPSS	25.400	7.95	7.85	5.63	4.00	16.5	17.6	12.00	1.50	1750	0.47	B
C2050HPSS	31.750	10.16	9.40	7.22	5.12	20.5	21.8	15.00	2.03	3250	0.77	B
C2060HPSS	38.100	11.91	12.70	8.31	6.00	25.8	26.8	17.00	2.42	3818	1.03	B
C2080HPSS	50.800	15.88	15.75	11.40	8.05	32.5	33.8	24.00	3.25	7955	1.83	B

- We are manufacturers of engineering and special chains, for every type of industry.

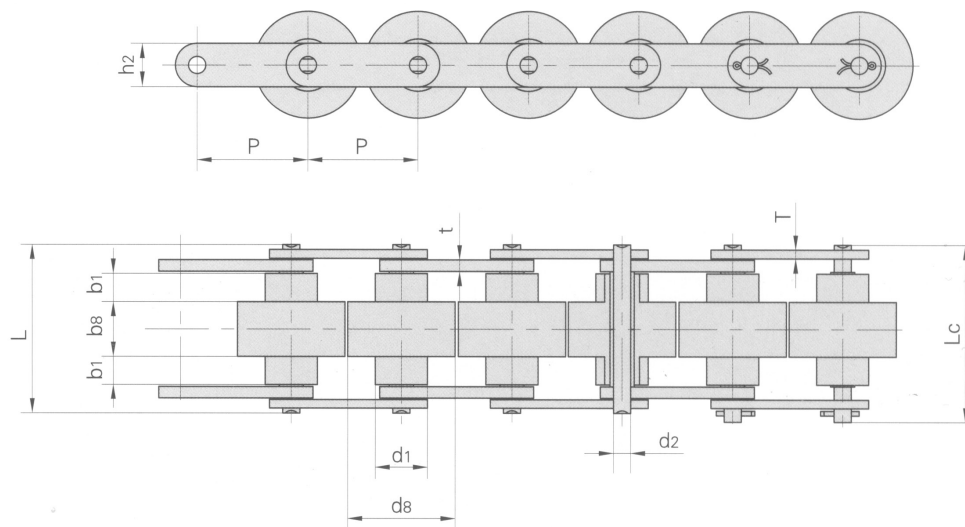
- In the chain market, our products are of the highest quality, and are manufactured under the international standards ANSI B29.1 M-2002 (DIN 3183) and ISO 606.

## Double Pitch Stainless Steel Hollow Pin Conveyor Chains



RAK CHAIN NO.	PITCH	ROLLER DIAMETER	WIDTH BETWEEN INNER PLATES	PIN DIAMETER		PIN LENGTH		INNER PLATE DEPTH	PLATE THICKNESS	BREAKING LOAD	WEIGHT PER METER
	P	d1 max	b1 min	d2 max	d3 min	L max	Lc max	h2 max	T max		
	MM	MM	MM	MM	MM	MM	MM	MM	MM	LB	KG/M
C2042HPSS	25.40	15.88	7.85	5.63	4.00	16.5	17.6	12.0	1.50	1750	0.79
C2052HPSS	31.75	19.05	9.53	7.22	5.12	20.5	21.8	15.0	2.03	3250	1.27
C2062HPSS	38.10	22.23	12.70	8.31	6.00	25.8	26.8	17.0	2.42	3818	1.74
C2082HPSS	50.80	28.58	15.75	11.40	8.05	32.4	33.8	24.0	3.25	7955	2.86
C2042H-HPSS	25.40	15.88	7.85	5.63	4.00	18.8	19.9	12.0	2.03	1750	0.96
C2052H-HPSS	31.75	19.05	9.53	7.22	5.12	22.1	23.4	15.0	2.42	3205	1.46
C2062H-HPSS	38.10	22.23	12.70	8.31	6.00	29.2	30.2	17.0	3.25	3818	2.02
C2082H-HPSS	50.80	28.58	15.75	11.40	8.05	36.2	37.6	24.0	4.00	7955	3.30

### Double Plus Chains

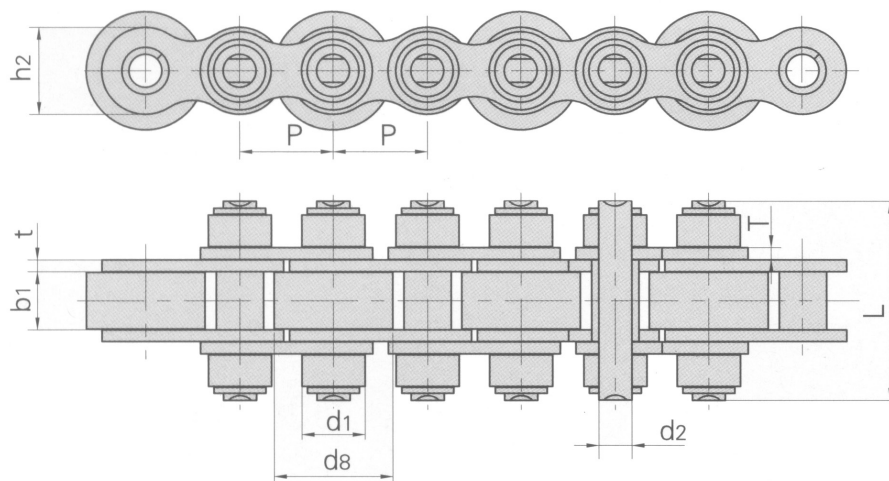


RAK CHAIN NO.	PITCH	ROLLER DIMENSION				PIN DIAMETER	PIN LENGTH		PLATE DIMENSION			WEIGHT PER METER
	P	d1 max	d8 max	b1 min	b8 max	d2 max	L max	Lc max	h2 max	T max	t max	q
	MM	MM	MM	MM	MM	MM	MM	MM	MM	MM	MM	kg/m
C2030	19.05	11.91	18.3	4.00	8.0	3.28	24.0	25.6	8.20	1.30	1.50	0.52
C2040	25.40	15.88	24.6	5.70	10.3	3.96	31.0	32.8	11.70	1.50	1.50	0.79
C2050	31.75	19.05	30.6	7.10	13.0	5.08	39.5	41.2	15.00	2.03	2.03	1.36
C2060	38.10	22.23	36.6	8.50	15.5	5.94	48.8	51.5	18.00	3.25	3.25	2.19
C2080	50.80	28.58	49.0	11.00	21.5	7.92	66.2	70.0	24.00	4.00	5.00	4.06

- We are manufacturers of engineering and special chains, for every type of industry.

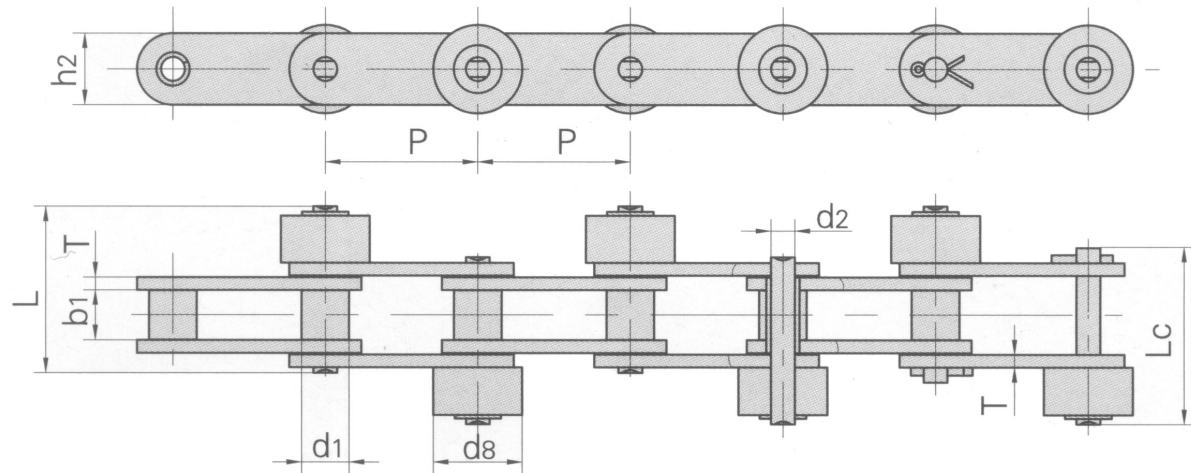
- In the chain market, our products are of the highest quality, and are manufactured under the international standards ANSI B29.1 M-2002 (DIN 3183) and ISO 606.





RAK CHAIN NO.	PITCH	ROLLER DIAMETER		WIDTH BETWEEN INNER PLATES	PIN DIAMETER	PIN LENGTH	PLATE DIMENSION		AVERAGE TENSILE STRENGTH
	P	d1 max	d8 max	b1 min	d2 max	L max	h2 max	t/T max	
	MM	MM	MM	MM	MM	MM	MM	MM	LB
O8BS-27-P16/C16	12.70	8.51	16.0	7.75	4.45	27.0	11.8	1.60/1.50	4091
12BS	25.40	12.07	28.0	11.68	5.72	45.0	16.0	1.85	6568
12BS-40-P28/C26	19.05	12.07	28.0	11.68	5.72	40.0	16.0	1.85	6591
12BS-43-P26/C26	19.05	12.07	26.0	11.68	5.72	43.0	16.0	1.85	6591
12BS-43-P28/C28	19.05	12.07	28.0	11.68	5.72	43.0	16.0	1.85	6591
12BS-48-P24/C24	19.05	12.07	24.0	11.68	5.72	48.0	16.0	1.85	6591
12BS-48-P26/C26	19.05	12.07	26.0	11.68	5.72	48.0	16.0	1.85	6591
12BS-48-P28/C28	19.05	12.07	28.0	11.68	5.72	48.0	16.0	1.85	6591
16BS-65-P38/C38	25.40	38.00	15.88	17.02	8.28	65.0	21.0	4.15/3.10	13636

### Double Plus Chains

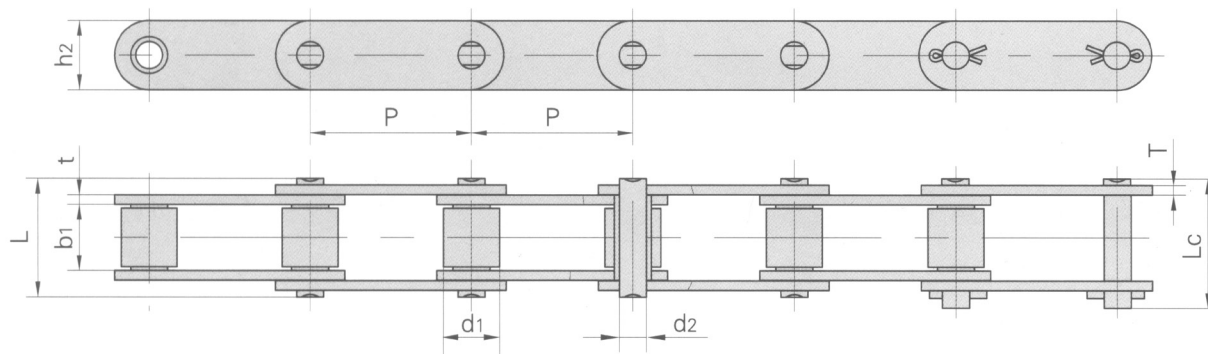


RAK CHAIN NO.	PITCH	ROLLER DIAMETER		WIDTH BETWEEN INNER PLATES	PIN DIAMETER	PIN LENGTH		PLATE DIMENSION		AVERAGE TENSILE STRENGTH	WEIGHT PER METER
	P	d1 max	d8 max	b1 min	d2 max	L max	Lc max	h2 max	T max	LB	KG/M
	MM	MM	MM	MM	MM	MM	MM	MM	MM		
C2040-PSR	25.40	7.95	15.88	7.85	3.96	25.80	27.0	12.0	1.50	3137	0.99
C2050S	31.75	10.16	19.05	9.40	5.08	31.80	34.0	15.0	2.03	4955	1.52
C2052SF1	31.75	19.05	27.00	9.40	5.08	35.00	37.3	15.0	2.03	4955	3.06
C2060HS	38.10	11.91	22.23	12.57	5.94	44.00	46.6	18.0	3.25	7069	1.78

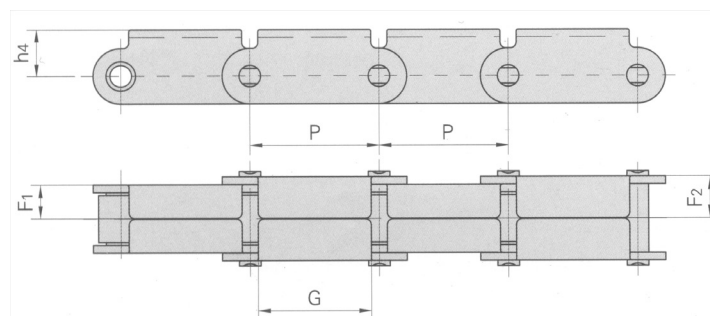
- We are manufacturers of engineering and special chains, for every type of industry.

- In the chain market, our products are of the highest quality, and are manufactured under the international standards ANSI B29.1 M-2002 (DIN 3183) and ISO 606.

## Lumber Conveyor Chains and Attachments



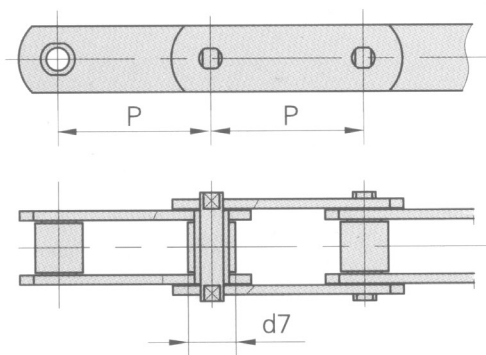
RAK CHAIN NO.	PITCH	ROLLER DIAMETER	WIDTH BETWEEN INNER PLATES	PIN DIAMETER	PIN LENGTH		INNER PLATE DEPTH	PLATE THICKNESS	AVERAGE TENSILE STRENGTH	WEIGHT PER METER
	P	d1 max	b1 min	d2 max	L max	Lc max	h2 max	t/T max		
	MM	MM	MM	MM	MM	MM	MM	MM	LB	KG/M
81X	66.27	23.00	27.00	11.10	49.0	53.5	28.50	4.00	24250	3.78
81XH	66.27	23.00	27.78	11.10	60.7	65.1	31.35	7.94/5.55	34523	5.88
81XH	66.27	23.00	27.78	11.10	65.6	70.0	31.35	7.94	43432	6.70
81XHS	66.27	23.00	27.00	11.10	63.6	68.0	31.80	7.60	34545	6.55
500R	50.00	25.40	25.40	14.63	52.0	56.4	40.00	5.00	22727	7.13



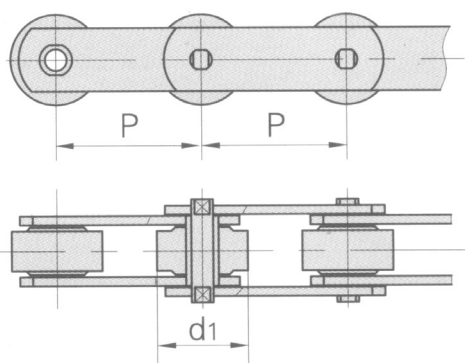
RAK CHAIN NO.	P	F1	F2	G	h4
	MM	MM	MM	MM	MM
81XF1(RT)	66.27	17.5	21.8	58.0	23.85

### Conveyor Chains-M Series

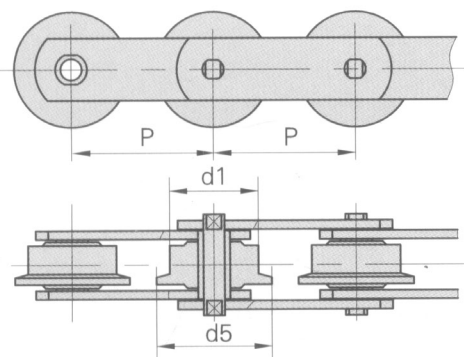
With S small rollers type



With P large rollers type



With F flanged rollers type

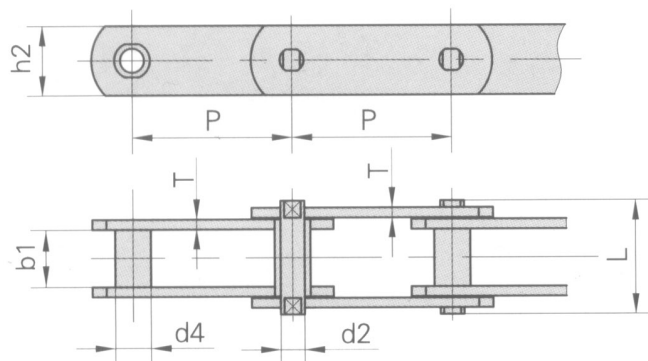


RAK CHAIN NO.	PITCH								ROLLER DIAMETER			BUSH DIAMETER
	P								d1 max	d7 max	d5 max	d4 max
	MM								MM	MM	MM	MM
M20	40.0	50.0	63.0	80.0	100.0	125.0	160.0		25.0	12.50	32.00	9.0
M28	50.0	63.0	80.0	100.0	125.0	160.0	200.0		30.0	15.00	36.00	10.0
M40	63.0	80.0	100.0	125.0	160.0	200.0	250.0		36.0	18.00	42.00	12.5
M56	63.0	80.0	100.0	125.0	160.0	200.0	250.0		42.0	21.00	50.00	15.0
M80	80.0	100.0	125.0	160.0	200.0	250.0	315.0		50.0	25.00	60.00	18.0
M112	80.0	100.0	125.0	160.0	200.0	250.0	315.0	400.0	60.0	30.00	70.00	21.0
M160	100.0	125.0	160.0	200.0	250.0	315.0	400.0	500.0	70.0	36.00	85.00	25.0
M224	125.0	160.0	200.0	250.0	315.0	400.0	500.0	630.0	85.0	42.00	100.00	30.0
M315	160.0	200.0	250.0	315.0	400.0	500.0	630.0		100.0	50.00	120.00	36.0

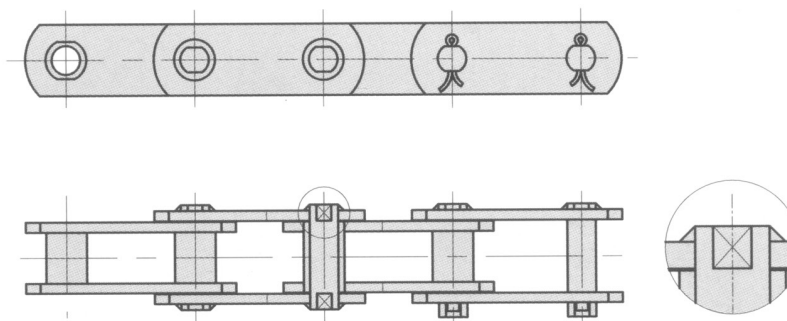
- We are manufacturers of engineering and special chains, for every type of industry.

- In the chain market, our products are of the highest quality, and are manufactured under the international standards ANSI B29.1 M-2002 (DIN 3183) and ISO 606.

Without rollers



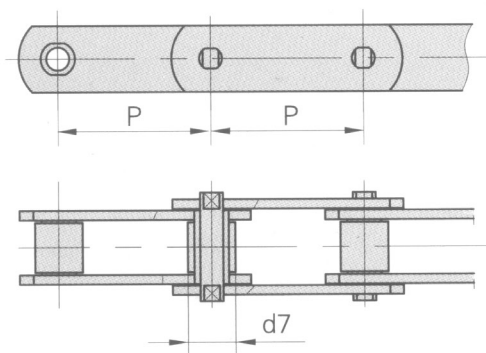
Welded pins with plates



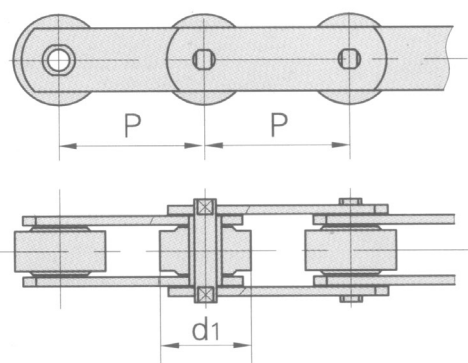
RAK CHAIN NO.	WIDTH BETWEEN INNER PLATES	PIN DIAMETER	PIN LENGTH	PLATE DEPTH	PLATE THICKNESS	AVERAGE TENSILE STRENGTH
	b1 min	d2 max	L max	h2 max	T max	
M20	MM	MM	MM	MM	MM	LB
M28	18.0	7.0	40.0	21.0	3.0	6364
M40	20.0	8.5	45.0	26.0	3.5	9091
M56	24.0	10.0	52.0	31.0	4.0	12727
M112	32.0	15.0	73.0	41.0	6.0	25454
M160	37.0	18.0	85.0	51.0	7.0	36364
M224	43.0	21.0	98.0	62.0	8.0	50909
M315	48.0	25.0	112.0	72.0	10.0	71591
M450	56.0	30.0	135.0	82.0	12.0	102272

## Conveyor Chains-M Series

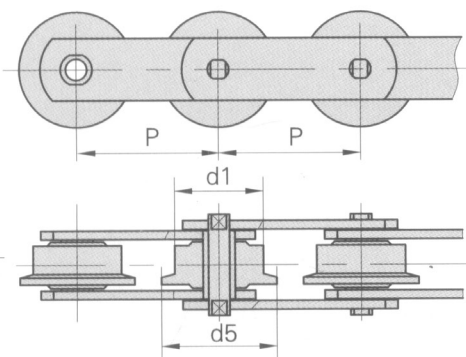
With S small rollers type



With P large rollers type



With F flanged rollers type

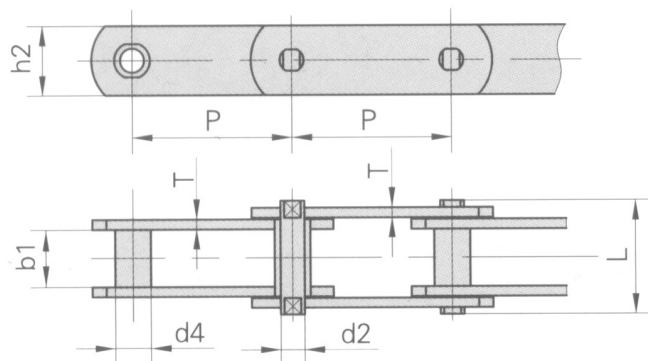


RAK CHAIN NO.	PITCH							ROLLER DIAMETER			BUSH DIAMETER
	P							d1 max	d7 max	d5 max	d4 max
	MM							MM	MM	MM	MM
M20	40.0	50.0	63.0	80.0	100.0	125.0	160.0	25.0	12.50	32.00	9.0
M28	50.0	63.0	80.0	100.0	125.0	160.0	200.0	30.0	15.00	36.00	10.0
M40	63.0	80.0	100.0	125.0	160.0	200.0	250.0	36.0	18.00	42.00	12.5
M56	63.0	80.0	100.0	125.0	160.0	200.0	250.0	42.0	21.00	50.00	15.0
M80	80.0	100.0	125.0	160.0	200.0	250.0	315.0	50.0	25.00	60.00	18.0
M112	80.0	100.0	125.0	160.0	200.0	250.0	315.0	60.0	30.00	70.00	21.0
M160	100.0	125.0	160.0	200.0	250.0	315.0	400.0	70.0	36.00	85.00	25.0
M224	125.0	160.0	200.0	250.0	315.0	400.0	500.0	85.0	42.00	100.00	30.0
M315	160.0	200.0	250.0	315.0	400.0	500.0	630.0	100.0	50.00	120.00	36.0
M450	200.0	250.0	315.0	400.0	500.0	630.0	800.0	120.0	60.00	140.00	42.0

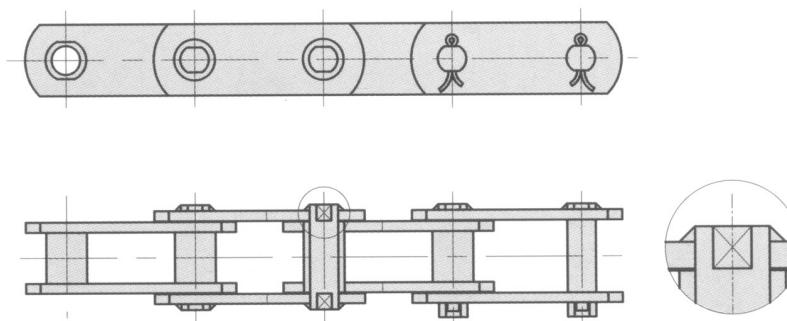
- We are manufacturers of engineering and special chains, for every type of industry.

- In the chain market, our products are of the highest quality, and are manufactured under the international standards ANSI B29.1 M-2002 (DIN 3183) and ISO 606.

Without rollers

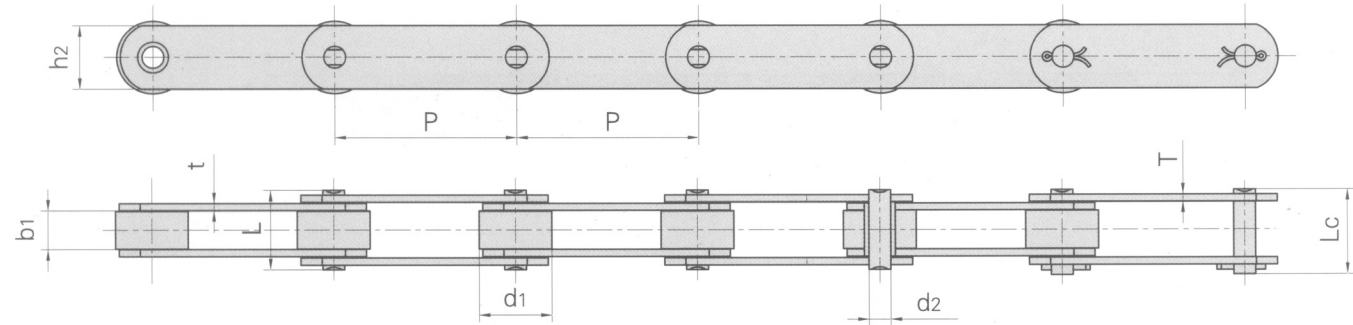


Welded pins with plates



RAK CHAIN NO.	WIDTH BETWEEN INNER PLATES	PIN DIAMETER	PIN LENGTH	PLATE DEPTH	PLATE THICKNESS	AVERAGE TENSILE STRENGTH
	b1 min	d2 max	L max	h2 max	T max	
M20	16.0	6.0	35.0	18.0	2.5	4545
M28	18.0	7.0	40.0	20.0	3.0	6364
M40	20.0	8.5	45.0	25.0	3.5	9091
M56	24.0	10.0	52.0	30.0	4.0	12727
M80	28.0	12.0	62.0	35.0	5.0	18182
M112	32.0	15.0	73.0	40.0	6.0	25454
M160	37.0	18.0	85.0	50.0	7.0	36364
M224	43.0	21.0	98.0	60.0	8.0	50909
M315	48.0	25.0	112.0	70.0	10.0	71591
M450	56.0	30.0	135.0	80.0	12.0	102272

### Conveyor Chains-M Series



RAK CHAIN NO.	PITCH	ROLLER DIAMETER	WIDTH BETWEEN INNER PLATES	PIN DIAMETER	PIN LENGTH		INNER PLATE DEPTH	PLATE THICKNESS	AVERAGE TENSILE STRENGTH	WEIGHT PER METER
	P	d1 max	b1 min	d2 max	L max	Lc max	h2 max	t/T max		
	MM	MM	MM	MM	MM	MM	MM	MM	LB	KG/M
M18F1-P-50	50.00	25.00	11.50	5.72	26.0	28.2	18.0	2.5	4050	1.81
M22-P-50	50.00	25.00	11.50	8.00	28.0	30.9	20.0	3.0	4950	2.64
M22F1-P-50	50.00	25.00	12.00	10.00	29.4	32.6	20.0	3.0	4950	2.30
M35F2-S-35	35.00	14.00	14.00	7.00	31.0	34.0	18.0	3.5/2.5	7874	1.82
M35F2-P-35	35.00	22.00	14.00	7.00	31.0	34.0	18.0	3.5/2.5	7874	2.47
M35F3-B-35	35.00	14.00	14.00	6.00	30.2	33.0	18.0	3.0	7874	1.73
M35F4-C-69	69.00	25.00	12.00	7.00	27.5	30.0	19.0	2.5	7874	1.60
M35F5-P-50.8	50.80	25.00	16.00	7.00	33.0	36.0	20.0	3.0	7874	2.48
M40-FP1-100	100.00	36.00	20.00	8.50	40.5	44.5	25.0	3.5	9000	3.28
M40F4-P-50	50.00	31.75	15.00	10.00	36.6	39.0	25.0	4.0	9000	4.00
M40F5-S-65	65.00	24.00	15.00	10.00	36.6	39.0	30.0	4.0	9000	4.86
M40F6-P-80	80.00	36.00	20.00	8.50	41.0	44.2	25.0	4.0	9000	3.68
M56F14-S-63	63.00	21.00	24.00	10.00	46.0	49.5	30.0	4.0	12600	3.81
M56F14-S-80	80.00	21.00	24.00	10.00	46.0	49.5	30.0	4.0	12600	3.27
M56F14-P-100	100.00	42.00	24.00	10.00	46.0	49.5	30.0	4.0	12600	5.00

- We are manufacturers of engineering and special chains, for every type of industry.

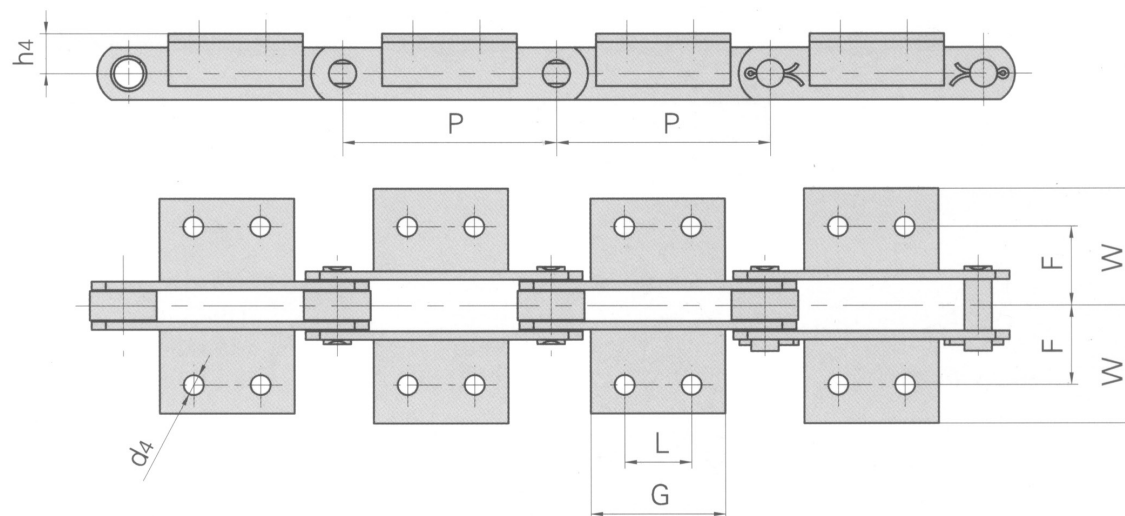
- In the chain market, our products are of the highest quality, and are manufactured under the international standards ANSI B29.1 M-2002 (DIN 3183) and ISO 606.



RAK CHAIN NO.	PITCH	ROLLER DIAMETER	WIDTH BETWEEN INNER PLATES	PIN DIAMETER	PIN LENGTH		INNER PLATE DEPTH	PLATE THICKNESS	AVERAGE TENSILE STRENGTH	WEIGHT PER METER
	P	d1 max	b1 min	d2 max	L max	Lc max	h2 max	t/T max		
	MM	MM	MM	MM	MM	MM	MM	MM	LB	KG/M
M75-P-75	75.00	40.00	22.00	12.00	44.0	47.0	35.0	4.0	16870	5.88
M80F3-P-125	125.00	50.00	28.00	11.00	55.0	58.5	35.0	5.0	18000	6.72
M80F4-A-100	100.00	25.00	28.00	12.00	55.0	58.5	35.0	5.0	18000	4.63
M80F6-P-75	75.00	35.00	14.00	12.00	40.5	45.0	30.0	5.0	18000	4.80
M80F8-B-100	100.00	18.00	28.00	12.00	55.0	58.5	35.0	5.0	18000	4.14
M80F8-B-80	80.00	18.00	28.00	12.00	55.0	58.5	35.0	5.0	18000	4.48
M100-P-80	80.00	47.50	31.40	15.90	71.2	76.0	40.0	8.0	22727	12.36
M112F2-P-125	125.00	55.00	50.00	16.00	87.1	91.6	40.0	7.2	25200	13.35
M112F6-B-100	100.00	21.00	32.00	15.00	64.0	68.3	40.0	6.0	25200	6.14
M112F6-B-125	125.00	21.00								5.46
M112F6-P-125	125.00	60.0								10.33
M112-P-125	125.00	30.0	32.00	15.00	64.0	68.3	40.0	6.0	25200	6.39
M112F8-S-100	100.00	30.0	31.00	15.00	63.5	68.0	40.0	6.0	25200	7.14
M160F1-P-100	100.00	36.00	36.00	18.00	76.0	80.0	40.0	7.0	36364	9.42
M22F3-P-160	160.00	80.00	30.00	21.00	81.0		60.0	8.0	50909	17.34
M315F6-B-160	160.00	42.00	80.00	25.00	140.0	140.0	80.0	12.0	70862	27.30



### Conveyor Chains With Attachments-M Series



RAK CHAIN NO.	P	L	G	d4	F	W	h4
	MM	MM	MM	MM	MM	MM	MM
M20	40.0	attachments with 1 hole	14.0	6.6	27.0	40.0	16.0
	50.0	attachments with 1 hole	14.0				
	63.0	20.0	35.0				
	80.0	35.0	50.0				
M28	50.0	attachments with 1 hole	20.0	9.0	32.0	47.0	20.0
	63.0	attachments with 1 hole	20.0				
	80.0	25.0	45.0				
	100.0	40.0	60.0				
M40	63.0	attachments with 1 hole	31.0	9.0	35.0	50.0	25.0
	80.0	20.0	45.0				
	100.0	40.0	60.0				
	125.0	65.0	85.0				

- We are manufacturers of engineering and special chains, for every type of industry.

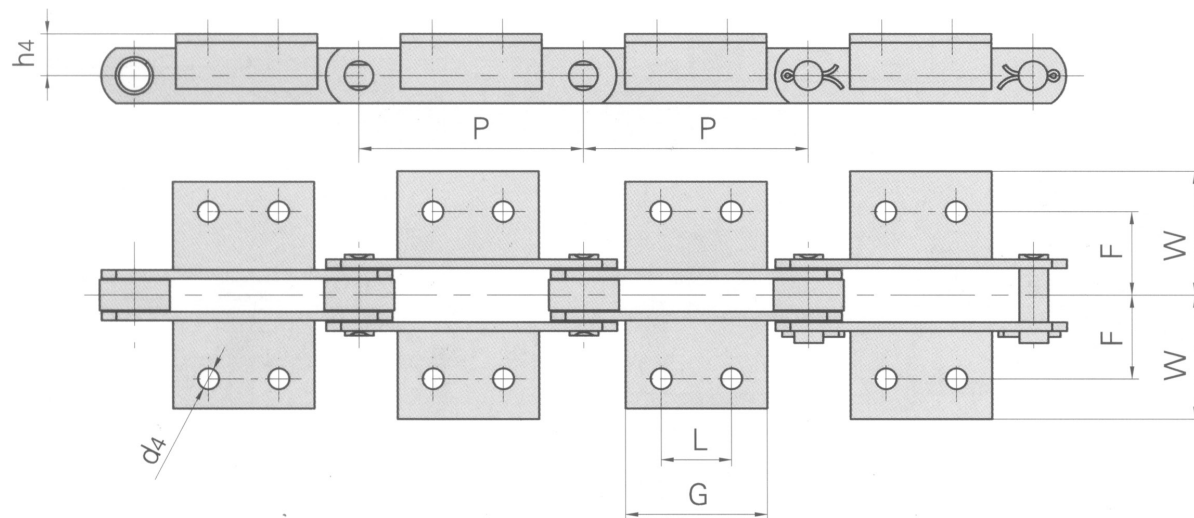
- In the chain market, our products are of the highest quality, and are manufactured under the international standards ANSI B29.1 M-2002 (DIN 3183) and ISO 606.

## Conveyor Chains With Attachments-M Series

RAK CHAIN NO.	P	L	G	d4	F	W	h4
	MM	MM	MM	MM	MM	MM	MM
M56	63.0	attachments with 1 hole	22.0	11.0	44.0	61.0	30.0
	80.0	attachments with 1 hole	30.0				
	100.0	25.0	50.0				
	125.0	50.0	75.0				
	160.0	85.0	110.0				
M80	80.0	attachments with 1 hole	30.0	11.0	48.0	65.0	35.0
	100.0	25.0	50.0				
	125.0	50.0	75.0				
	160.0	85.0	110.0				
	200.0	125.0	150.0				

RAK

### Conveyor Chains With Attachments-M Series



RAK CHAIN NO.	P	L	G	d4	F	W	h4
	MM	MM	MM	MM	MM	MM	MM
M112	80.0	attachments with 1 hole	28.0	14.0	55.0	80.0	40.0
	100.0	attachments with 1 hole	40.0				
	125.0	35.0	65.0				
	160.0	65.0	95.0				
	200.0	100.0	130.0				
M160	100.0	attachments with 1 hole	30.0	14.0	62.0	85.0	45.0
	125.0	25.0	50.0				
	160.0	50.0	80.0				
	200.0	85.0	115.0				
	250.0	145.0	175.0				

- We are manufacturers of engineering and special chains, for every type of industry.

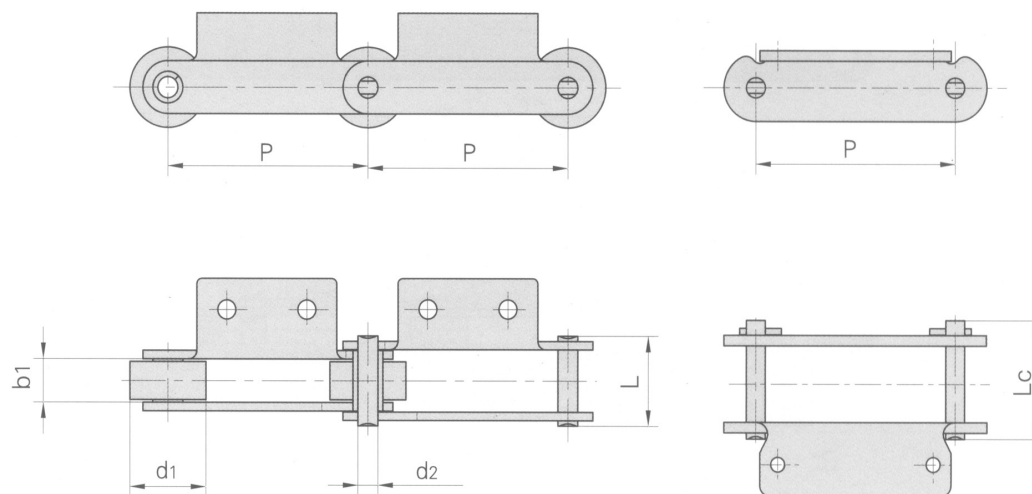
- In the chain market, our products are of the highest quality, and are manufactured under the international standards ANSI B29.1 M-2002 (DIN 3183) and ISO 606.

Conveyor Chains With Attachments-M Series

RAK CHAIN NO.	P	L	G	d4	F	W	h4
	MM	MM	MM	MM	MM	MM	MM
M224	125.0	attachments with 1 hole	35.0	18.0	70.0	110.0	55.0
	160.0	attachments with 1 hole	60.0				
	200.0	65.0	100.0				
	250.0	125.0	160.0				
	315.0	190.0	230.0				
M315	160.0	attachments with 1 hole	35.0	18.0	80.0	115.0	65.0
	200.0	50.0	85.0				
	250.0	100.0	140.0				
	315.0	155.0	190.0				
	400.0	155.0	205.0				



## Conveyor Chains With Attachments-M Series



RAK CHAIN NO.	PITCH	ROLLER DIAMETER	WIDTH BETWEEN INNER PLATES	PIN DIAMETER	PIN LENGTH		AVERAGE TENSILE STRENGTH	WEIGHT PER METER
	P	d1 max	b1 min	d2 max	L max	Lc max		
	MM	MM	MM	MM	MM	MM	LB	KG/M
M18F1A1-P-50	50.00	25.00	11.50	5.72	26.0	28.2	4050	2.46
M18F2A1.02-P-50	50.00	25.00	11.50	5.72	28.0	30.2	4050	2.18
M18F4A1.02-S-50	50.00	15.00	12.00	6.00	24.0	26.5	4050	1.20
M28F1A2-P-80	80.00	29.40	18.00	7.00	35.4	38.7	6300	2.60
M28F3A2-P-63	63.00	30.00	17.00	7.00	37.3	40.3	7874	3.48
M28F3A2-F-100	100.00	30.00	17.00	7.00	37.3	40.3	7874	3.46
M32A1.02-P-50	50.00	31.00	15.00	10.00	33.0	35.5	7200	4.09
M32A1F1-P-50	50.00	31.00	15.00	10.00	33.0	35.5	7200	3.96
M35F4A1.01-C-69	69.00	25.00	12.00	7.00	27.5	30.0	7874	2.26
M40FA1.02-P-50	50.00	31.00	15.00	10.00	36.6	39.0	16872	4.52
M40FK2F1-P-50	50.00	31.00	15.00	10.00	36.6	39.0	9000	4.94
M40F10-F-76.2	76.20	31.50	15.00	14.00	38.0	42.0	9000	4.16

- We are manufacturers of engineering and special chains, for every type of industry.

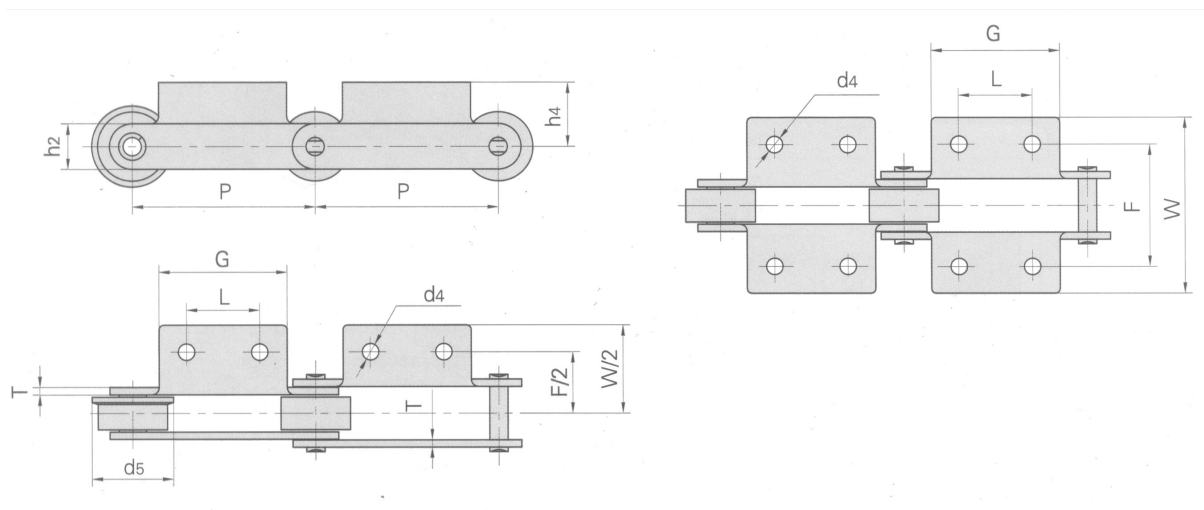
- In the chain market, our products are of the highest quality, and are manufactured under the international standards ANSI B29.1 M-2002 (DIN 3183) and ISO 606.

## Conveyor Chains With Attachments-M Series

RAK CHAIN NO.	PITCH	ROLLER DIAMETER	WIDTH BETWEEN INNER PLATES	PIN DIAMETER	PIN LENGTH		AVERAGE TENSILE STRENGTH	WEIGHT PER METER
	P	d1 max	b1 min	d2 max	L max	Lc max		
	MM	MM	MM	MM	MM	MM	LB	KG/M
M80K1F1-P-100	100.00	50.00	28.00	12.00	55.0	58.5	18000	9.10
M80K2F1-B-100	100.00	18.00	28.00	12.00	55.0	58.5	18000	5.94
M80F5K1-B-100	100.00	18.00	28.00	12.00	55.0	58.5	18000	5.45
M112K2F1-S-125	125.00	30.00	32.00	16.00	64.5	69.0	25200	7.35
M112F3-F-200	200.00	60.00	37.00	16.00	69.0	74.0	25200	11.00
M112F5K2-P-100	100.00	36.00	37.00	16.00	69.0	74.0	25200	8.28
M160F1K2-P-100	100.00	36.00	36.00	18.00	76.0	80.0	35993	10.80
M160F2-B-100	100.00	25.00	37.00	18.00	73.3	83.0	49940	11.36
M160F3K1-P-101.6	101.60	66.70	26.00	26.90	58.0	78.5	35093	17.37
M160F12K2-S-100	100.00	36.00	38.00	14.00	76.0		22496	9.33
M224F6A2-P-160	160.00	85.00	42.00	21.00	87.5	92.5	51982	27.56

RAK

## Conveyor Chains With Attachments-M Series



RAK CHAIN NO.	P	L	G	F	W	h4	h2	d4	T	d5
	MM	MM	MM	MM	MM	MM	MM	MM	MM	MM
M18F1A1-P-50	50.00	attachments with 1 hole	46.0	44.0	72.0	24.0	18.0	6.5	2.50	
M18F2A1.02-P-50	50.00	attachments with 1 hole	41.0	48.0	68.0	25.0	15.0	6.5	3.00	
M18F4A1.02-S-50	50.00	attachments with 1 hole	30.0	50.0	83.0	20.0	15.0	8.0	2.03	
M28F1A2-P-80	80.00	25.00	45.8	66.0	91.6	11.8	20.5	8.8	3.25	
M28F3A2-P-63	63.00	20.00	50.0	64.0	92.0	20.0	20.0	9.0	4.00	
M28F3A2-F-100	100.00	40.00	76.0	64.0	100.0	20.0	20.0	9.0	4.00	40.0
M32A1.02-P-50	50.00	attachments with 1 hole	60.0	62.0	97.0	35.0	23.0	10.0	3.00	
M32A1F1-P-50	50.00	attachments with 1 hole	30.0	62.0	92.0	28.0	23.0	10.0	3.00	
M35F4A1.01-C-69	69.00	attachments with 1 hole	60.0	50.0	74.0	25.5	19.0	7.0	2.50	
M40FA1.02-P-50	50.00	attachments with 1 hole	60.0	70.0	98.0	17.5	25.0	10.0	4.00	
M40FK2F1-P-50	50.00	30.00	60.0	67.5	100.0	17.0	25.0	9.0	4.00	
M40F10-F-76.2	76.20	22.20	38.3	76.2	106.5	19.0	26.0	9.4	4.00	40.0
M80K1F1-P-100	100.00	attachments with 1 hole	30.0	96.0	138.0	35.0	35.0	11.0	5.00	
M80K2F1-B-100	100.00	70.00	100.0	96.0	130.0	35.0	35.0	11.0	5.00	
M80F5K1-B-100	100.00	attachments with 1 hole	60.0	100.0	156.0	23.2	35.0	13.0x1.70	5.00	
M112K2F1-S-125	125.00	80.00	110.0	85.8	115.8	35.0	40.0	13.0	6.00	

- We are manufacturers of engineering and special chains, for every type of industry.

- In the chain market, our products are of the highest quality, and are manufactured under the international standards ANSI B29.1 M-2002 (DIN 3183) and ISO 606.

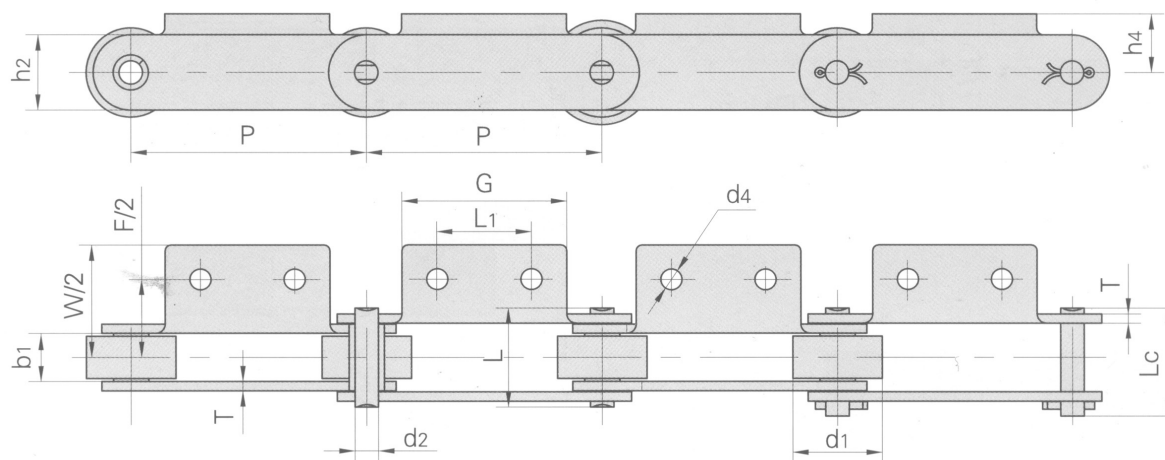


## Conveyor Chains With Attachments-M Series

RAK CHAIN NO.	P	L	G	F	W	h4	h2	d4	T	d5
	MM	MM	MM	MM	MM	MM	MM	MM	MM	MM
M112F3-F-200	200.00	90.00	120.0	102.0	137.5	40.0	45.0	11.0	6.00	75.0
M112F5K2-P-100	100.00	35.00	65.0	98.5	140.0	40.0	40.0	14.0	6.00	
M160F1K2-P-100	100.00	40.00	80.0	124.0	183.0	35.0	40.0	14.0	7.00	
M160F2-B-100	100.00	attachments with 1 hole	110.0	125.0	155.0	45.0	50.0	17.0	7.00	
M160F3K1F1-P-101.6	100.00	attachments with 1 hole	56.0	175.0	204.0	38.0	51.0	11.0	7.10/5.10	
M160F12K2-S-100	100.00	30.00	70.0	100.0	120.0	35.0	40.0	13.0	5.60	
M224F6A2-P-160	160.00	80.00	125.0	136.0	182.0	62.0	72.0	17.0	8.00	

RAK

### Conveyor Chains With Attachments-M Series

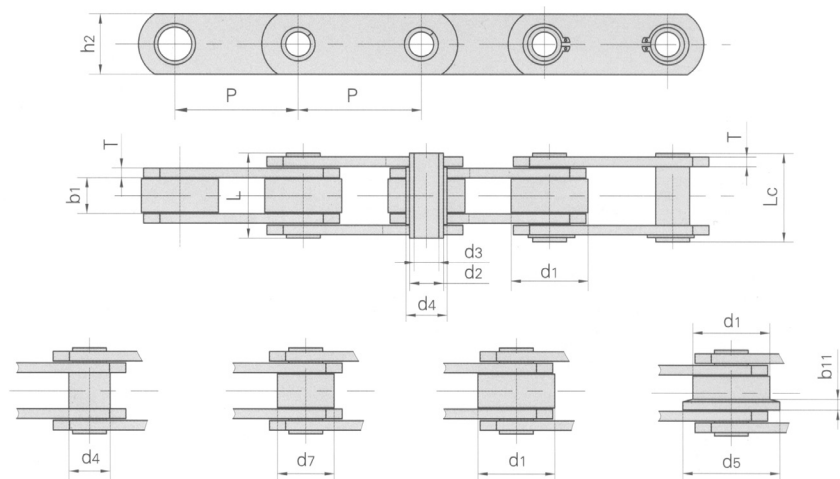


RAK CHAIN NO.	PITCH	ROLLER DIAMETER	WIDTH BETWEEN INNER PLATES	PIN DIAMETER	PIN LENGTH		AVERAGE TENSILE STRENGTH	WEIGHT PER METER
	P	d1 max	b1 min	d2 max	L max	Lc max		
	MM	MM	MM	MM	MM	MM	LB	KG/M
M40F1-P-125	125.0	36.0	38.0	14.27	75.6		9091	10.18
M56F1-P-100	100.0	38.0	20.5	10.00	42.3	46.1	12727	4.63
M56F2-P-100	100.0	42.0	22.5	10.00	44.6	48.5	12727	5.67
M56F3-P-100	100.0	38.0	20.5	10.00	42.3	46.1	12727	4.72
M56F8-P-100	100.0	38.0	17.0	10.00	38.8	42.6	12727	3.79
M56A2-P-125	125.0	42.0	24.0	10.00	46.0	49.5	12727	5.24
M75-P100	100.0	38.0	18.9	9.53	40.4	44.7	17045	4.85
M75-P100F1	100.0	38.0	18.9	9.53	38.4	42.7	17045	4.01
M75-P100F3	100.0	28.5	23.9	11.10	46.3	50.3	17045	4.53
M75F4-P-100	100.0	38.0	18.9	9.53	40.4	44.7	17045	4.62
M160-S-200K2F2	200.0	36.0	36.0	18.00	76.0	80.0	36364	11.40
M224F1K2-P-200	200.0	85.0	42.0	21.00	95.0		50909	21.20

- We are manufacturers of engineering and special chains, for every type of industry.

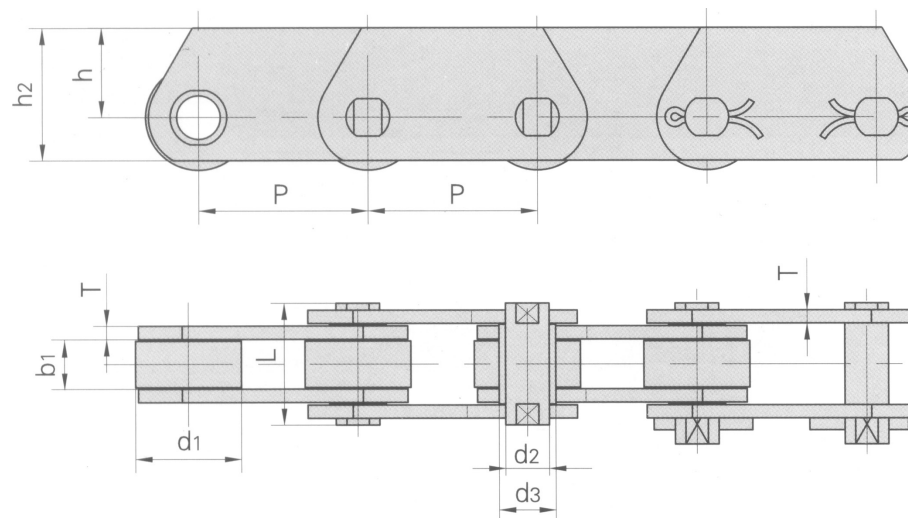
- In the chain market, our products are of the highest quality, and are manufactured under the international standards ANSI B29.1 M-2002 (DIN 3183) and ISO 606.

## Conveyor Chains With Attachments-M Series



RAK CHAIN NO.	P	L1	G	F	W	h4	h2	d4	T
	MM	MM	MM	MM	MM	MM	MM	MM	MM
M40F1-P-125	125.0	50.0	90.0	100.0	140.0	36.0	50.0	13.0	6.0
M56F1-P-100	100.0	40.0	70.0	67.5	96.6	35.0	25.0	9.0	4.0
M56F2-P-100	100.0	29.7	50.0	124.0	148.0	21.5	32.0	7.0	4.0
M56F3-P-100	100.0	50.0	70.0	71.0	101.0	35.0	25.0	9.0	4.0
M56F8-P-100	100.0	attachments with 1 hole	70.0	63.8	95.0	25.0	25.0	8.2	4.0
M56A2-P-125	125.0	50.0	75.0	88.0	128.0	30.0	30.0	11.0	4.0
M75-P100	100.0	40.0	70.0	64.0	112.0	24.9	26.0	9.0	4.0
M75-P100F1	100.0	40.0	70.0	64.0	112.0	24.4	26.0	9.0	3.5
M75-P100F3	100.0	50.0	70.0	75.7	96.7	35.0	26.0	9.7	4.0
M75F4-P-100	100.0	40.0	70.0	90.0	112.4	24.9	26.0	8.5	4.0
M160-S-200K2F2	200.0	100.0	180.0	103.0	133.0	45.0	51.0	9.0	7.0
M224F1K2-P-200	200.0	80.0	120.0	128.0	168.0	40.0	50.0	14.0	9.0

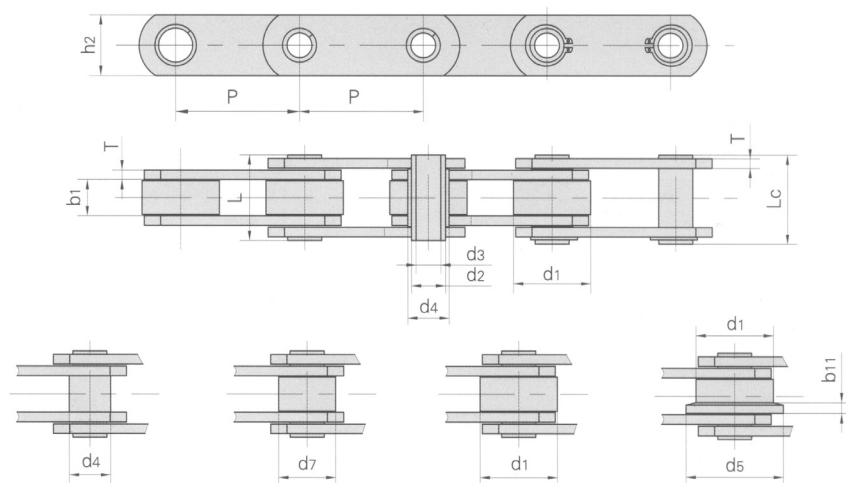
### Conveyor Chains-MT Series



RAK CHAIN NO.	PITCH					ROLLER DIAMETER	PIN DIAMETER	BUSH DIAMETER	PLATE THICKNESS	WIDTH BETWEEN INNER PLATES	PIN LENGTH	PLATE DEPTH		AVERAGE TENSILE STRENGTH
	P					d1 MAX	d2 MAX	d3 MAX	T MAX	b1 MIN	L MAX	h2 MAX	h MAX	LB
	MM	MM	MM	MM	MM	MM	MM	MM	MM	MM	MM	MM	MM	
MT20	40.0	50.0	63.0	80.0	100.0	25.0	6.0	9.0	2.5	16.0	35.0	25.0	16.0	7520
MT28	50.0	63.0	80.0	100.0	125.0	30.0	7.0	10.0	3.0	18.0	40.0	30.0	20.0	10100
MT40	63.0	80.0	100.0	125.0	160.0	36.0	8.5	12.5	3.5	20.0	45.0	35.0	22.5	15200
MT56	63.0	80.0	100.0	125.0	160.0	42.0	10.0	15.0	4.0	24.0	52.0	45.0	30.0	21320
MT80	80.0	100.0	125.0	160.0	200.0	50.0	12.0	18.0	5.0	28.0	62.0	50.0	32.5	31000
MT112	80.0	100.0	125.0	160.0	200.0	60.0	15.0	21.0	6.0	32.0	73.0	60.0	40.0	42100
MT160	100.0	125.0	160.0	200.0	250.0	70.0	18.0	25.0	7.0	37.0	85.0	70.0	45.0	62200
MT224	125.0	160.0	200.0	250.0	315.0	85.0	21.0	30.0	8.0	43.0	98.0	90.0	60.0	81500
MT315	160.0	200.0	250.0	315.0	400.0	100.0	25.0	36.0	10.0	48.0	112.0	100.0	65.0	124670
MT450	200.0	250.0	315.0	400.0	500.0	120.0	30.0	42.0	12.0	56.0	135.0	120.0	80.0	182760

- We are manufacturers of engineering and special chains, for every type of industry.

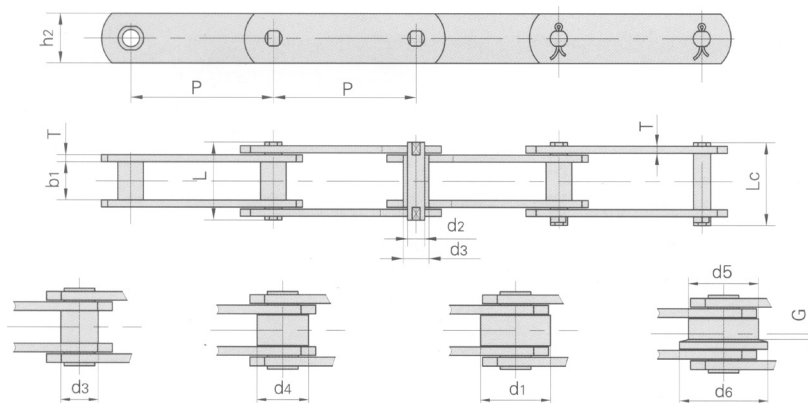
- In the chain market, our products are of the highest quality, and are manufactured under the international standards ANSI B29.1 M-2002 (DIN 3183) and ISO 606.



RAK CHAIN NO.	PITCH						ROLLER DIMENSION				BUSH DIAMETER	PLATE DEPTH	WIDTH BETWEEN INNER PLATES
	P						d1 MAX	d7 MAX	d5 MAX	b11	d4 MAX	h2 MAX	b1 MIN
	MM	MM	MM	MM	MM	MM	MM	MM	MM	MM	MM	MM	MM
MC28	63.0	80.0	100.0	125.0	160.0		6.0	9.0	2.5	16.0	35.0	7520	20.0
MC56	80.0	100.0	125.0	160.0	200.0	250.0	7.0	10.0	3.0	18.0	40.0	10100	24.0
MC112	100.0	125.0	160.0	200.0	250.0	315.0	8.5	12.5	3.5	20.0	45.0	15200	32.0
MC224	160.0	200.0	250.0	315.0	400.0	500.0	10.0	15.0	4.0	24.0	52.0	21320	43.0

RAK CHAIN NO.	PIN DIAMETER		PIN LENGTH		PLATE THICKNESS	BREAKING LOAD
	d2 MAX	d3 MIN	L MAX	Lc MAX	T MAX	
	MM	MM	MM	MM	MM	LB
MC28	13.0	8.2	36.0	38.5	3.0	11450
MC56	15.5	10.2	45.0	47.5	4.0	25220
MC112	22.0	14.3	62.5	64.3	6.0	43560
MC224	30.0	20.3	83.0	85.5	8.0	82300

### Conveyor Chains-FV Series



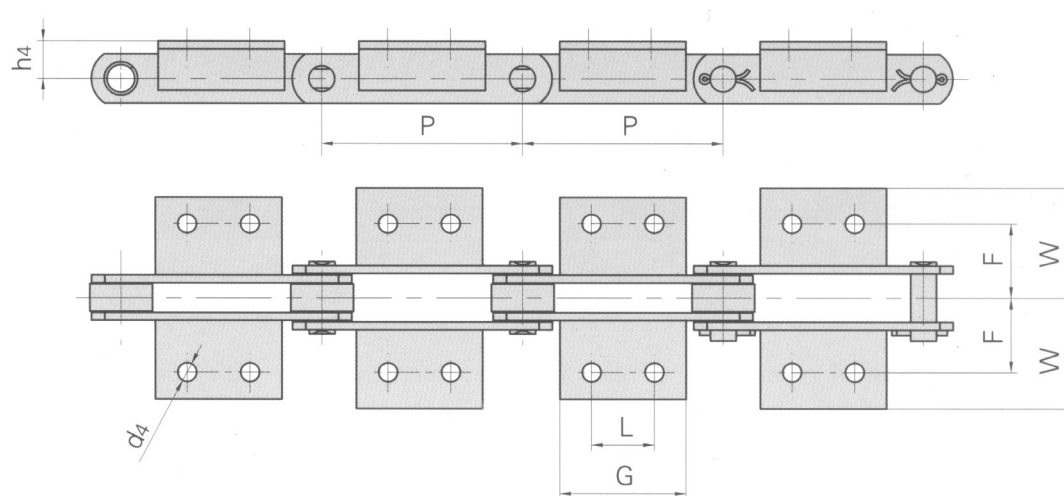
RAK CHAIN NO.	PITCH							ROLLER DIMENSION				
	P							d1 MAX	d4 MAX	d5 MAX	d6 MAX	G
	MM	MM	MM	MM	MM	MM	MM	MM	MM	MM	MM	MM
FV40	50.0	63.0	80.0	100.0	125.0			32.0	20.0	40.0	50.0	4.0
FV63	63.0	80.0	100.0	125.0	160.0			40.0	26.0	50.0	63.0	5.0
FV90	63.0	80.0	100.0	125.0	160.0	200.0	250.0	48.0	30.0	63.0	78.0	6.5
FV112	100.0	125.0	160.0	200.0	250.0			55.0	32.0	72.0	90.0	7.5
FV140	100.0	125.0	160.0	200.0	250.0			60.0	36.0	80.0	100.0	9.0
FV180	125.0	160.0	200.0	250.0	315.0			70.0	42.0	100.0	125.0	13.0
FV250	160.0	200.0	250.0	315.0	400.0			80.0	50.0	125.0	155.0	15.0
FV315	160.0	200.0	250.0	315.0	400.0			90.0	60.0	140.0	175.0	18.0

RAK CHAIN NO.	BUSH DIAMETER	WIDTH BETWEEN INNER PLATES	PIN DIAMETER	PIN LENGTH		PLATE DEPTH	PLATE THICKNESS	AVERAGE TENSILE STRENGTH
	d3 MAX	b1 MIN	d2 MAX	L MIN	Lc MAX	h2 MAX	T MAX	
	MM	MM	MM	MM	MM	MM	MM	LB
FV40	15.0	18.0	10.0	36.0	39.0	25.0	3.0	13250
FV63	18.0	22.0	12.0	45.0	48.5	30.0	4.0	19130
FV90	20.0	25.0	14.0	53.0	56.5	35.0	5.0	27890
FV112	22.0	30.0	16.0	62.0	66.0	40.0	6.0	41200
FV140	26.0	35.0	18.0	67.0	71.5	45.0	6.0	43780
FV180	30.0	45.0	20.0	86.0	92.0	50.0	8.0	58940
FV250	36.0	55.0	26.0	97.0	103.5	60.0	8.0	71340
FV315	42.0	65.0	30.0	113.0	126.5	70.0	10.0	114560

- We are manufacturers of engineering and special chains, for every type of industry.

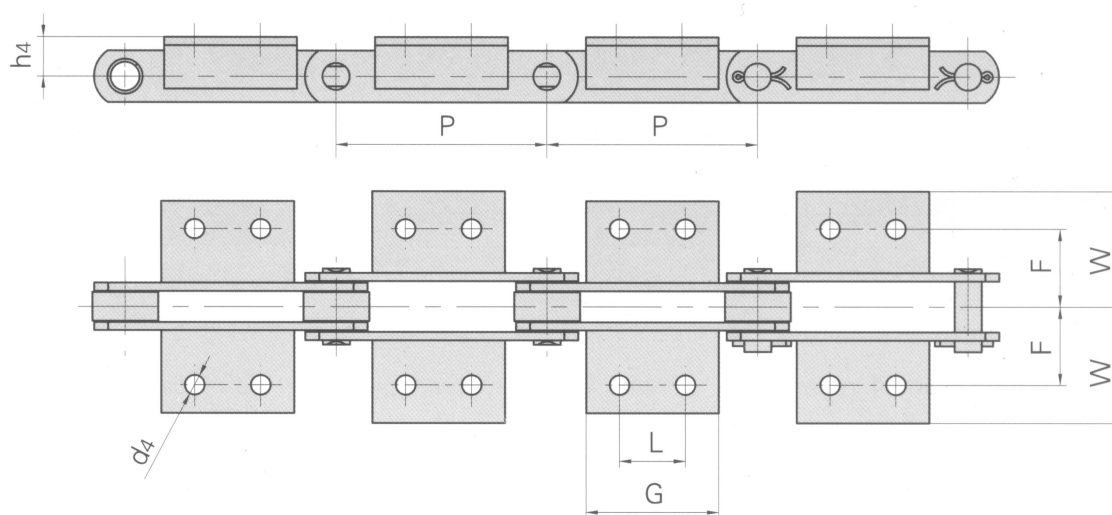
- In the chain market, our products are of the highest quality, and are manufactured under the international standards ANSI B29.1 M-2002 (DIN 3183) and ISO 606.

## Conveyor Chains With Attachments-FV Series



RAK CHAIN NO.	P	L	G	d4	F	W	h4
	MM	MM	MM	MM	MM	MM	MM
FV40	50.0		45.0	6.5	25.0	64.0	20.0
FV40	63.0		31.0	6.5	25.0	40.5	20.0
FV40	80.0	25.0	45.0	6.5	25.0	40.5	20.0
FV40	100.0	30.0	50.0	6.5	25.0	40.5	20.0
FV40	125.0	30.0	60.0	6.5	25.0	40.5	20.0
FV63	63.0		40.0	8.4	34.0	50.0	30.0
FV63	80.0	25.0	45.0	8.4	34.0	50.0	30.0
FV63	100.0	30.0	50.0	8.4	34.0	50.0	30.0
FV63	125.0	40.0	60.0	8.4	34.0	50.0	30.0
FV63	160.0	50.0	70.0	8.4	34.0	50.0	30.0

### Conveyor Chains With Attachments-FV Series



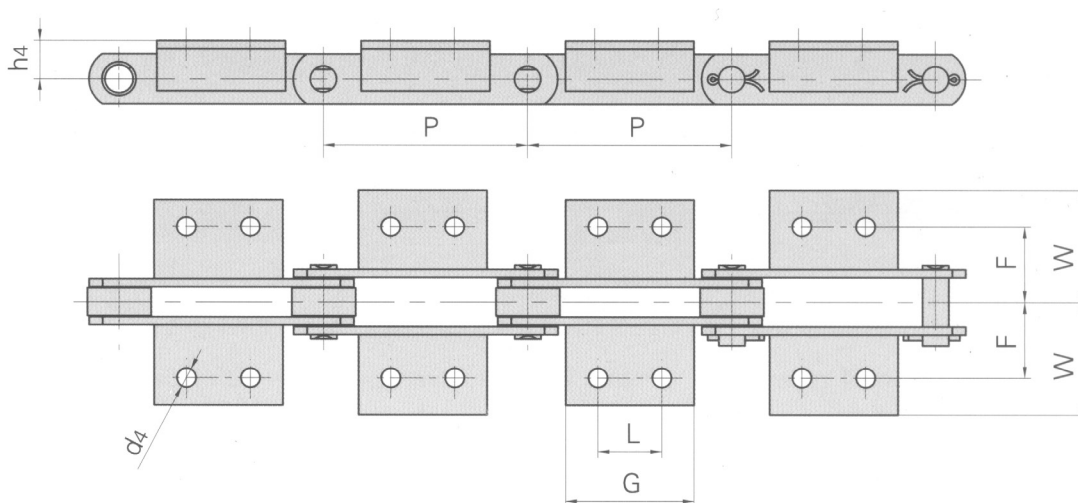
RAK CHAIN NO.	P	L	G	d4	F	W	h4
	MM	MM	MM	MM	MM	MM	MM
FV90	63.0		30.0	8.4	40.0	64.0	35.0
FV90	80.0	25.0	45.0	8.4	40.0	64.0	35.0
FV90	100.0	30.0	50.0	8.4	40.0	64.0	35.0
FV90	125.0	40.0	60.0	8.4	40.0	64.0	35.0
FV90	160.0	50.0	70.0	8.4	40.0	64.0	35.0
FV90	200.0	60.0	80.0	8.4	40.0	64.0	35.0
FV90	250.0	65.0	85.0	8.4	40.0	64.0	35.0
FV112	100.0	30.0	50.0	11.0	50.0	70.0	40.0
FV112	125.0	40.0	65.0	11.0	50.0	70.0	40.0
FV112	160.0	50.0	75.0	11.0	50.0	70.0	40.0
FV112	200.0	65.0	90.0	11.0	50.0	70.0	40.0
FV112	250.0	80.0	105.0	11.0	50.0	70.0	40.0

- We are manufacturers of engineering and special chains, for every type of industry.

- In the chain market, our products are of the highest quality, and are manufactured under the international standards ANSI B29.1 M-2002 (DIN 3183) and ISO 606.

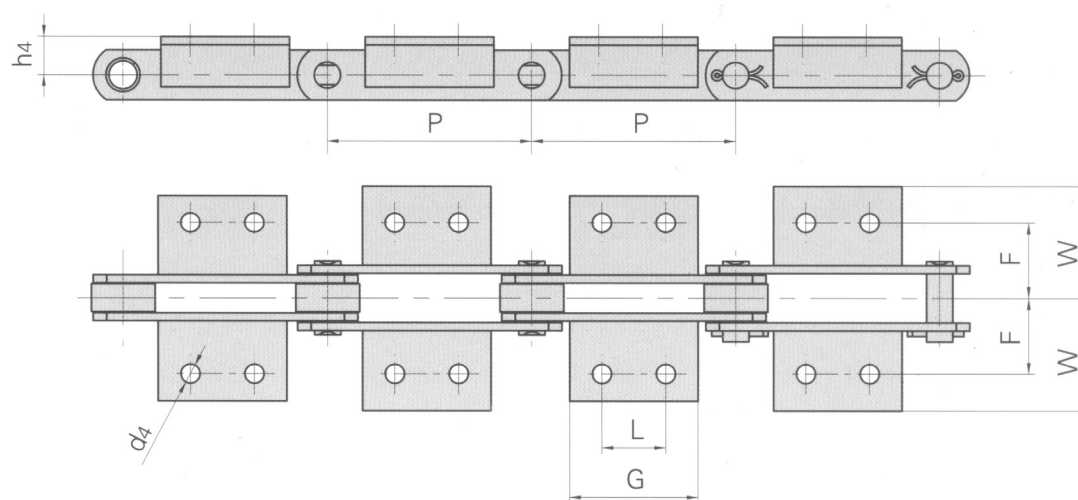


## Conveyor Chains With Attachments-FV Series



RAK CHAIN NO.	P	L	G	d4	F	W	h4
	MM	MM	MM	MM	MM	MM	MM
FV140	100.0	30.0	55.0	11.0	50.0	81.0	45.0
FV140	125.0	40.0	65.0	11.0	50.0	81.0	45.0
FV140	160.0	50.0	75.0	11.0	50.0	81.0	45.0
FV140	200.0	65.0	90.0	11.0	50.0	81.0	45.0
FV140	250.0	80.0	105.0	11.0	50.0	81.0	45.0
FV180	125.0	35.0	63.0	13.0	64.0	91.0	45.0
FV180	160.0	50.0	80.0	13.0	64.0	91.0	45.0
FV180	200.0	65.0	95.0	13.0	64.0	91.0	45.0
FV180	250.0	80.0	110.0	13.0	64.0	91.0	45.0
FV180	315.0	100.0	130.0	13.0	64.0	91.0	45.0
FV250	160.0	50.0	80.0	14.0	69.0	106.0	55.0
FV250	200.0	65.0	95.0	14.0	69.0	106.0	55.0

### Conveyor Chains With Attachments-FV Series

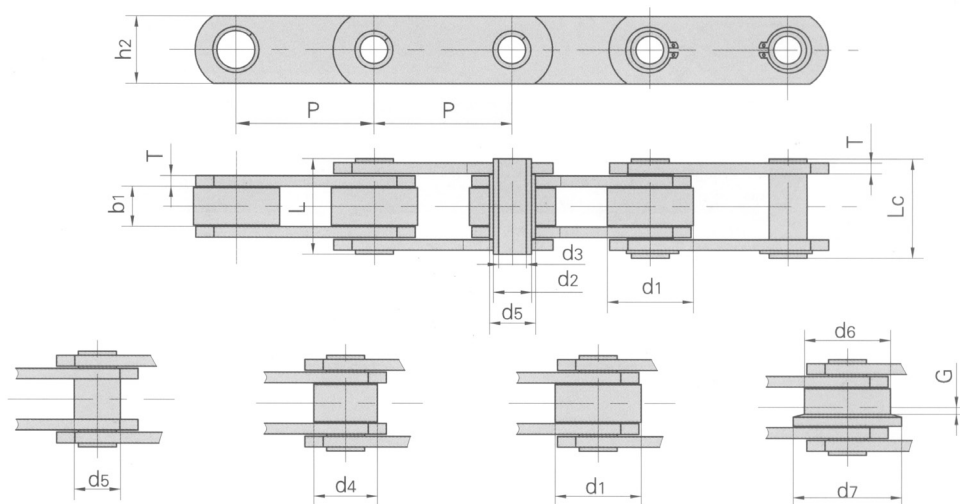


RAK CHAIN NO.	P	L	G	d4	F	W	h4
	MM	MM	MM	MM	MM	MM	MM
FV250	250.0	80.0	110.0	14.0	69.0	106.0	55.0
FV250	315.0	100.0	130.0	14.0	69.0	106.0	55.0
FV250	400.0	100.0	130.0	14.0	69.0	106.0	55.0
FV315	160.0		50.0	14.0	85.0	130.0	60.0
FV315	200.0	65.0	95.0	14.0	85.0	130.0	60.0
FV315	250.0	80.0	110.0	14.0	85.0	130.0	60.0
FV315	315.0	100.0	130.0	14.0	85.0	130.0	60.0
FV315	400.0	100.0	130.0	14.0	85.0	130.0	60.0

- We are manufacturers of engineering and special chains, for every type of industry.

- In the chain market, our products are of the highest quality, and are manufactured under the international standards ANSI B29.1 M-2002 (DIN 3183) and ISO 606.

## Conveyor Chains With Attachments-FVC Series

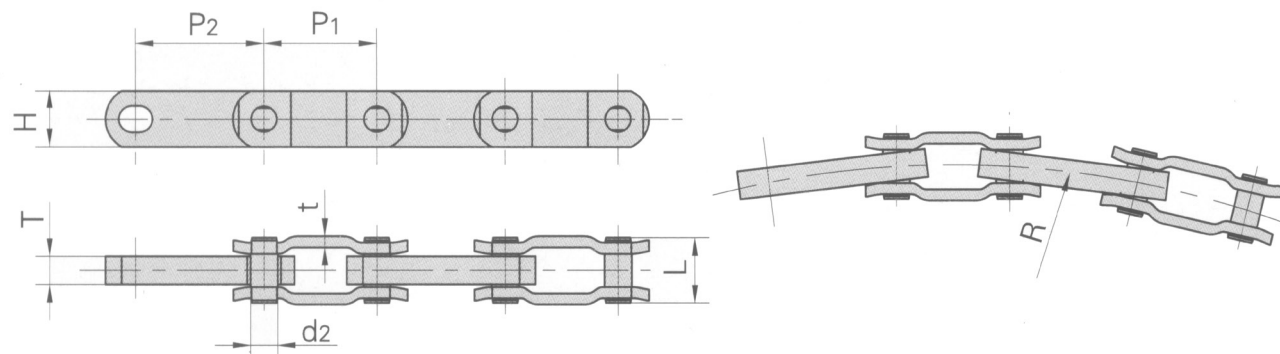


RAK CHAIN NO.	PITCH							ROLLER DIMENSION				
	P							d1 MAX	d4 MAX	d5 MAX	d6 MAX	G
	MM	MM	MM	MM	MM	MM	MM	MM	MM	MM	MM	MM
FVC63	63.0	80.0	100.0	125.0	160.0			40.0	26.0	50.0	63.0	5.0
FVC90	63.0	80.0	100.0	125.0	160.0	200.0	250.0	48.0	30.0	63.0	78.0	6.5
FVC112	100.0	125.0	160.0	200.0	250.0			55.0	32.0	72.0	90.0	7.5
FVC140	100.0	125.0	160.0	200.0	250.0			60.0	36.0	80.0	100.0	9.0
FVC180	125.0	160.0	200.0	250.0	315.0			70.0	42.0	100.0	125.0	13.0
FVC250	160.0	200.0	250.0	315.0	400.0			80.0	50.0	125.0	155.0	15.0
FVC315	160.0	200.0	250.0	315.0	400.0			90.0	60.0	140.0	175.0	18.0

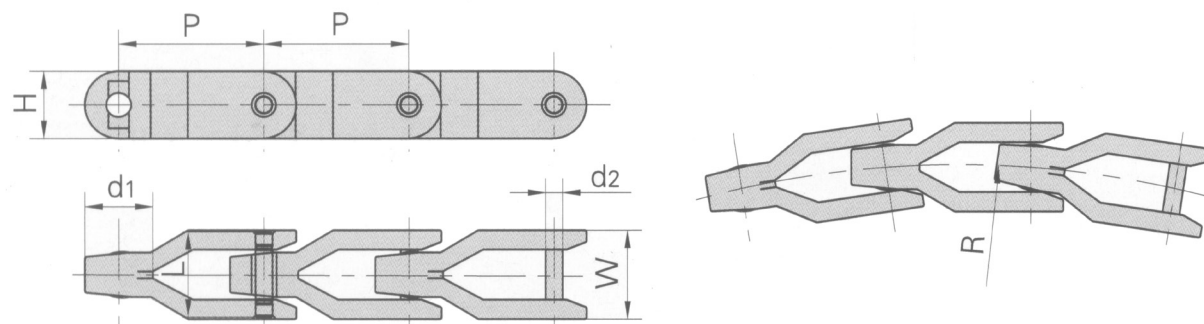
RAK CHAIN NO.	WIDTH BETWEEN INNER PLATES	PIN DIAMETER		BUSH DIAMETER	PIN LENGTH		PLATE THICKNESS	PLATE DEPTH	AVERAGE TENSILE STRENGTH
	b1 MIN	d2 MAX	d3 MIN	d5 MAX	L MAX	Lc MAX	T MAX	h2 MAX	
	MM	MM	MM	MM	MM	MM	MM	MM	LBS
FVC63	22.0	12.0	8.0	18.0	45.0	50.5	4.0	30.0	10500
FVC90	25.0	14.0	10.0	20.0	53.0	56.5	5.0	35.0	16600
FVC112	30.0	16.0	11.0	22.0	62.0	63.0	6.0	40.0	20600
FVC140	35.0	18.0	12.0	26.0	67.0	68.5	6.0	45.0	27000
FVC180	45.0	20.0	14.0	30.0	86.0	88.0	8.0	50.0	33000
FVC250	55.0	26.0	18.0	36.0	97.0	103.5	8.0	60.0	50000
FVC315	65.0	30.0	20.0	42.0	117.0	121.5	10.0	70.0	69000



### Double Flex Chains



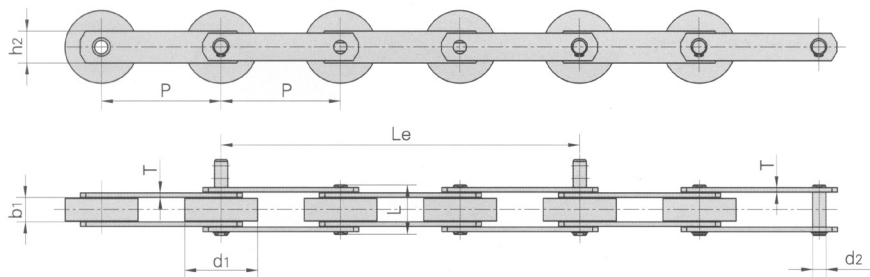
RAK CHAIN NO.	PITCH	PITCH	INNER PLATE THICKNESS	PIN DIMENSION		PLATE DIMENSION		SIDE BOW RADIUS	AVERAGE TENSILE STRENGTH	WEIGHT PER METER
	P1	P2		d2 MAX	L MAX	H MAX	t	R MIN		
	MM	MM	MM	MM	MM	MM	MM	MM	LB	KG/M
3500	63.5	76.2	15.9	14.27	37.0	31.8	6.3	508.0	41000	5.14



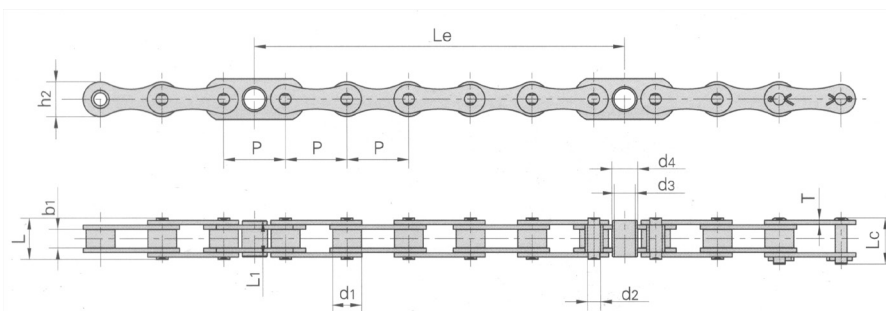
RAK CHAIN NO.	PITCH	PIN DIMENSION		PLATE DIMENSION		SIDE BOW RADIUS	AVERAGE TENSILE STRENGTH	WEIGHT PER METER
	P1	d2 MAX	L MAX	H MAX	W MAX	R MIN		
	MM	MM	MM	MM	MM	MM	LBS	KG/M
CC1400	81.3	9.5	48.0	38.5	50.0	500.0	9950	1.99

- We are manufacturers of engineering and special chains, for every type of industry.

- In the chain market, our products are of the highest quality, and are manufactured under the international standards ANSI B29.1 M-2002 (DIN 3183) and ISO 606.



RAK CHAIN NO.	PITCH	ROLLER DIAMETER	WIDTH BETWEEN INNER PLATES	PIN DIAMETER	PIN LENGTH	INNER PLATE DEPTH	PLATE THICKNESS	DISTANCE BETWEEN STEPS	AVERAGE TENSILE STRENGTH	WEIGHT PER STEP
	P	d1 MAX	b1 MIN	d2 MAX	L MAX	h2	T MAX	Le		
	MM	MM	MM	MM	MM	MM	MM	MM	LB	KG
ST131	131.33	80.00	27.00	24.00	54.5	50.0	5.0	394	41000	3.70
T131	131.33	80.00	27.00	14.63	55.0	40.0	5.0	394	41000	2.48
JJ131	131.33	80.00	27.00	14.63	54.5	35.0	5.0	394	30400	2.31
ST33	131.33	70.00	27.00	14.63	55.0	40.0	5.0	394	41000	2.45
ST133F1	131.33	80.00	27.00	24.00	54.5	50.0	5.0	394	41000	3.53



RAK CHAIN NO.	PITCH	ROLLER DIAMETER	WIDTH BETWEEN INNER PLATES	PIN DIMENSION			BUSH DIMENSION			PLATE DIMENSION		DISTANCE BETWEEN STEPS	AVERAGE TENSILE STRENGTH
	P1	d1 MAX	b1 MIN	d2 MAX	L MAX	Lc MAX	d3	d4	L1 MAX	h2 MAX	T MAX	Le	
	MM	MM	MM	MM	MM	MM	MM	MM	MM	MM	MM	MM	LB
CT13	68.40	32.0	20.6	14.29	44.9	50.75	23.5	28.5	40.85	38.50	4.8	410.4	29980
P67FD	67.73	28.5	27.0	14.29	52.3	50.77	23.0	27.0	36.85	38.00	4.8	406.4	31240