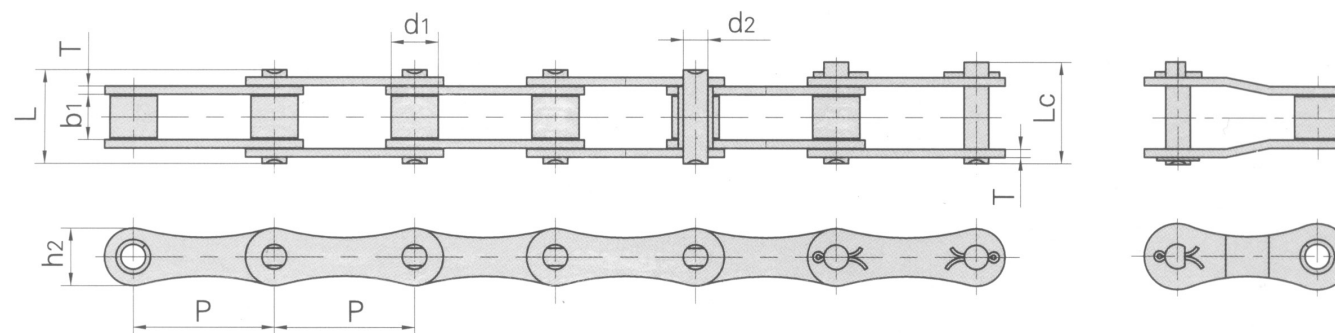




# AGRICULTURAL CHAINS

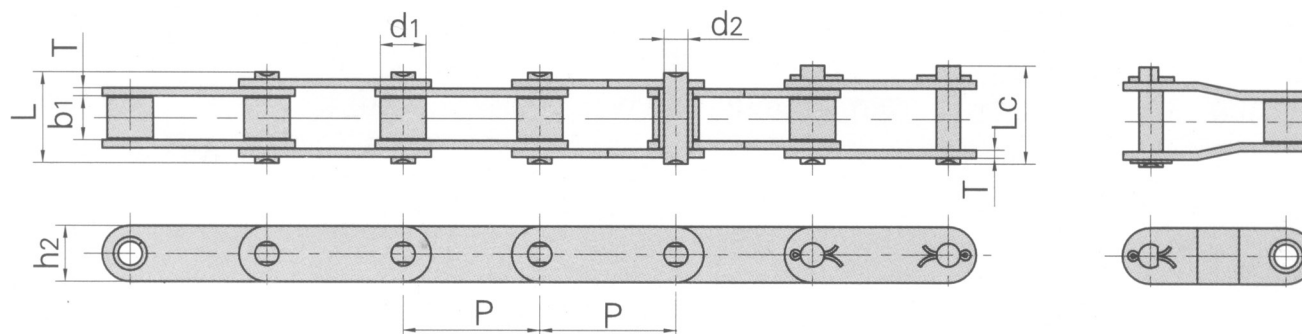
### Agricultural Chains- A Series



RAK CHAIN NO.	PITCH	ROLLER DIAMETER	WIDTH BETWEEN INNER PLATES	PIN DIAMETER	PIN LENGTH		INNER PLATE DEPTH	PLATE THICKNESS	AVERAGE TENSILE STRENGTH	WEIGHT PER METER
	P	d1	b1	d2	L MAX	Lc MAX	h2	T MAX		
	MM	MM	MM	MM	MM	MM	MM	MM	LB	KGM
A 550	41.40	16.87	19.81	7.19	35.00	38.00	19.30	2.80	8920	1.79
A555	41.40	16.87	12.70	7.19	29.10	32.00	19.30	3.10	8920	1.60
A557	41.40	17.78	20.24	8.00	37.40	40.60	23.10	3.10	13100	2.45
A620	42.01	17.91	24.51	7.19	41.80	45.20	20.20	3.25	8920	2.18

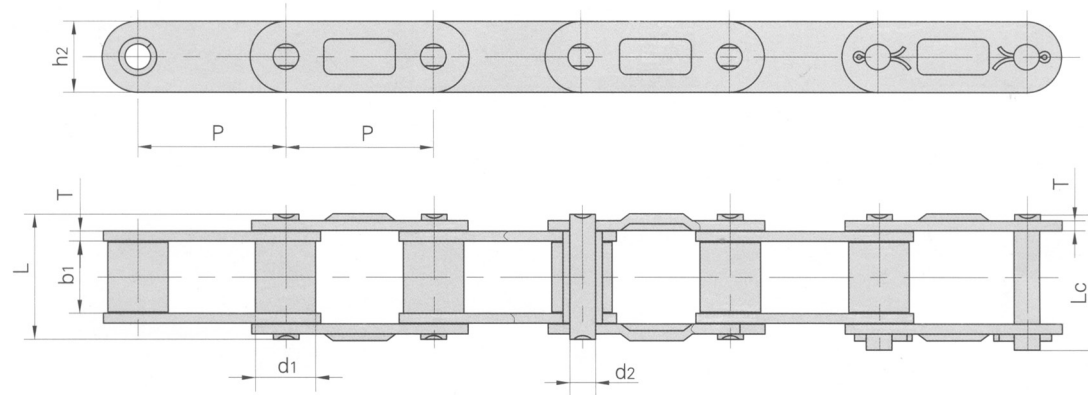
- We are manufacturers of engineering and special chains, for every type of industry.

- In the chain market, our products are of the highest quality, and are manufactured under the international standards ANSI B29.1 M-2002 (DIN 3183) and ISO 606.



RAK CHAIN NO.	PITCH	ROLLER DIAMETER	WIDTH BETWEEN INNER PLATES	PIN DIAMETER	PIN LENGTH		INNER PLATE DEPTH	PLATE THICKNESS	AVERAGE TENSILE STRENGTH	WEIGHT PER METER
	P	d1	b1	d2	L MAX	Lc MAX	h2	T MAX		
	MM	MM	MM	MM	MM	MM	MM	MM	LB	KG/M
CA550	41.40	16.87	19.81	7.19	35.0	38.0	19.30	2.80	8920	1.94
CA550F	41.40	16.80	19.05	8.28	36.1	39.1	22.00	3.00	12910	2.24
CA555	41.40	16.87	12.70	7.19	29.1	32.0	19.30	3.10	8920	1.72
CA557	41.40	17.79	20.24	8.00	37.4	40.6	23.10	3.10	13100	2.60
CA620	42.01	17.91	24.51	7.19	41.8	45.2	20.20	3.25	8920	2.35
CA2060H	38.10	11.91	12.70	5.94	29.2	31.6	18.00	3.25	7230	1.45
CA2063H	38.10	11.89	12.70	5.94	29.4	34.2	19.30	3.25	7640	1.65
CA550F4	41.40	14.35	20.24	7.14	35.0	38.5	19.05	2.80	12100	1.76
CA550F5	41.40	16.66	20.24	7.14	35.0	38.5	19.05	2.80	10860	1.97

### Agricultural Chains- CA Series



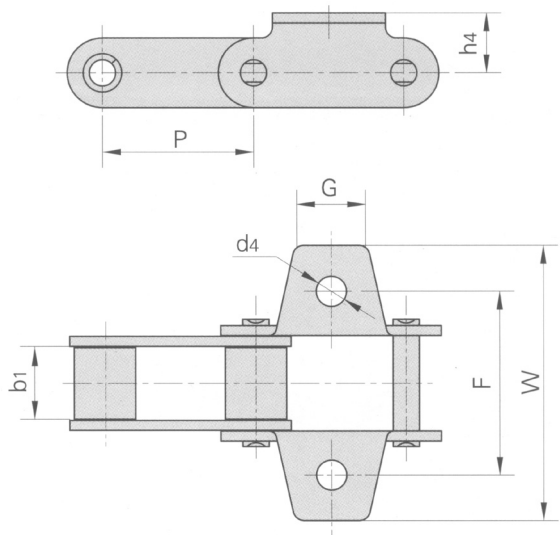
RAK CHAIN NO.	PITCH	ROLLER DIAMETER	WIDTH BETWEEN INNER PLATES	PIN DIAMETER	PIN LENGTH		INNER PLATE DEPTH	PLATE THICKNESS	AVERAGE TENSILE STRENGTH	WEIGHT PER METER
	P	d1	b1	d2	L MAX	Lc MAX	h2	T MAX		
	MM	MM	MM	MM	MM	MM	MM	MM	LB	KG/M
CA 550D	41.40	16.87	19.81	7.19	35.00	38.00	19.30	2.80	8920	1.94
CA555D	41.40	16.87	12.70	7.19	29.10	32.00	19.30	3.10	8920	1.72
CA557D	41.40	17.78	20.24	8.00	37.40	40.60	23.10	3.10	13100	2.6
CA620D	42.01	17.91	24.51	7.19	41.80	45.20	20.20	3.25	8920	2.35

- We are manufacturers of engineering and special chains, for every type of industry.

- In the chain market, our products are of the highest quality, and are manufactured under the international standards ANSI B29.1 M-2002 (DIN 3183) and ISO 606.



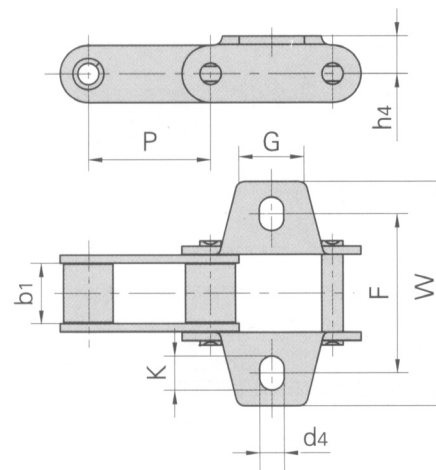
C Type Chains with Attachments



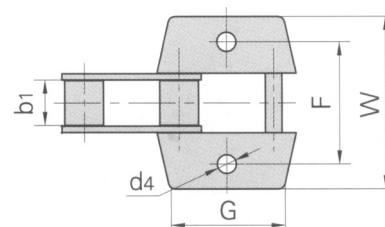
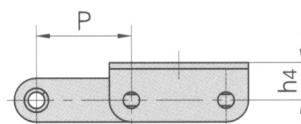
RAK CHAIN NO.	P	b1	G	F	W	h4	d4
	MM	MM	MM	MM	MM	MM	MM
CA 550F2	38.40	19.50	22.00	50.80	72.00	14.70	8.50
CA550F1K1	41.40	19.81	22.00	54.00	76.20	16.50	8.30
CA550F2K1	41.40	19.81	20.00	50.80	76.20	16.50	8.30
CA550K25	41.40	19.81	22.23	50.80	71.40	12.70	8.70
CA557K1	41.40	20.24	22.00	50.80	72.00	15.90	8.70
CA550VK1	41.40	19.05	27.00	54.00	75.54	16.50	8.50
CA550VK1F1	41.40	19.05	27.00	50.80	75.54	16.50	8.50
CA550F4K19	41.40	20.24	22.23	50.80	77.80	12.70	6.75



### C Type Chains With Attachments



RAK CHAIN NO.	P	b1	G	F	W	h4	d4	K
	MM	MM	MM	MM	MM	MM	MM	MM
CA 550K1	41.40	19.81	22.00	52.50	76.20	12.70	8.30	10
CA550K1F3	41.40	19.81	22.00	54.00	76.20	12.70	8.30	11.5
CA550F4K19F1	41.40	20.24	22.23	52.50	76.20	12.70	8.30	10

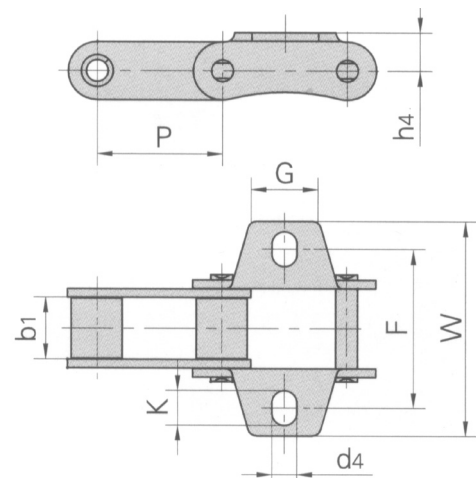


RAK CHAIN NO.	P	b1	G	F	W	h4	d4
	MM	MM	MM	MM	MM	MM	MM
CA 550K1F4	41.40	19.81	48.50	54.00	76.20	16.50	8.50
CA550K1F3V	41.40	19.05	56.00	54.00	75.54	16.50	8.50
CA620A1F1	42.01	24.51	63.50	67.70	91.70	16.50	10.50

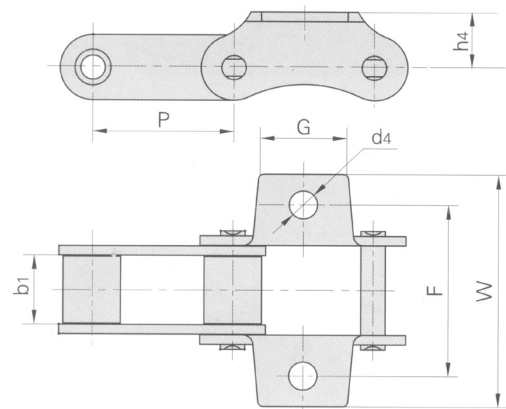
- We are manufacturers of engineering and special chains, for every type of industry.

- In the chain market, our products are of the highest quality, and are manufactured under the international standards ANSI B29.1 M-2002 (DIN 3183) and ISO 606.

C Type Chains With Attachments



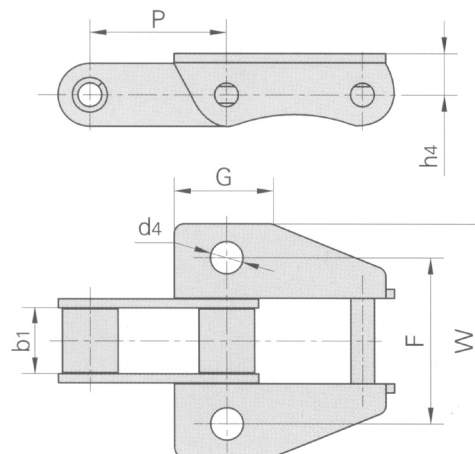
RAK CHAIN NO.	P	b1	G	F	W	h4	d4	K
	MM	MM	MM	MM	MM	MM	MM	MM
CA 550K19	41.40	19.81	22.00	50.80	71.00	12.70	8.30	11.00
CA550K19F1	41.40	19.81	22.00	54.00	71.00	12.70	8.30	11.00
CA550K19F2	41.40	19.81	25.40	50.80	71.00	16.50	8.30	11.50



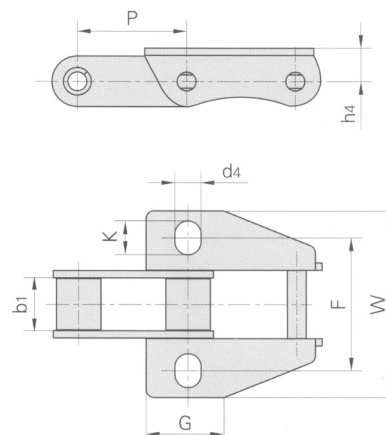
RAK CHAIN NO.	P	b1	G	F	W	h4	d4
	MM	MM	MM	MM	MM	MM	MM
CA 550F1	41.40	19.81	22.23	53.95	70.60	12.70	9.90
CA550K19F3	41.40	19.81	25.50	50.80	68.40	16.50	8.33



### C Type Chains With Attachments



RAK CHAIN NO.	P	b1	G	F	W	h4	d4
	MM	MM	MM	MM	MM	MM	MM
CA 550K39M	41.40	19.81	29.50	50.80	71.40	12.70	9.80
CA557K39M	41.40	20.24	29.50	50.80	71.40	12.70	9.80
CA557K39MF1	41.40	20.24	22.00	57.15	77.59	13.97	9.90

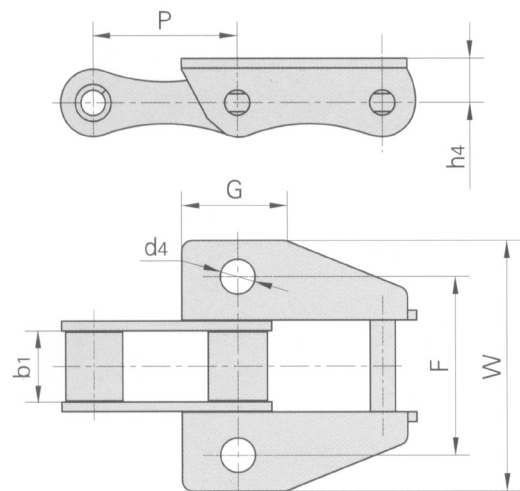


RAK CHAIN NO.	P	b1	G	F	W	h4	d4	K
	MM	MM	MM	MM	MM	MM	MM	MM
CA 550K39MF2	41.40	19.81	29.50	50.80	71.40	12.70	9.90	13
CA557K39MF2	41.40	20.24	29.50	50.80	71.40	12.70	9.90	13

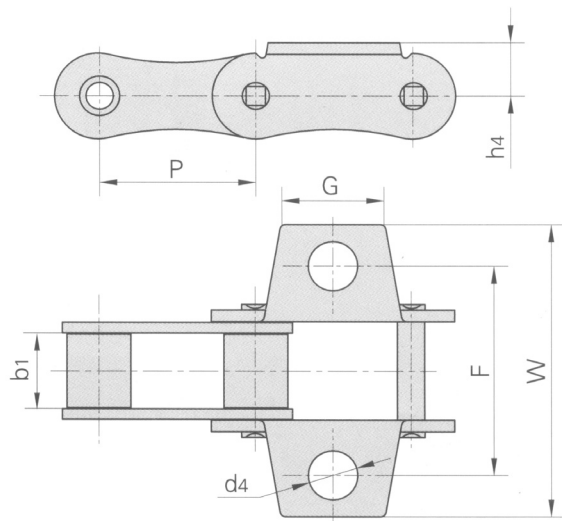
- We are manufacturers of engineering and special chains, for every type of industry.

- In the chain market, our products are of the highest quality, and are manufactured under the international standards ANSI B29.1 M-2002 (DIN 3183) and ISO 606.

C Type Chains With Attachments



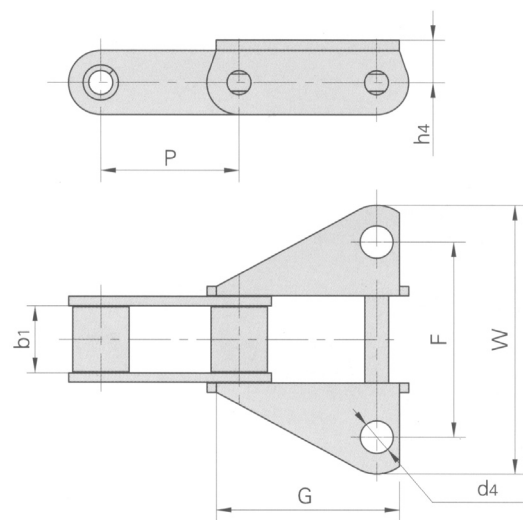
RAK CHAIN NO.	P	b1	G	F	W	h4	d4
	MM	MM	MM	MM	MM	MM	MM
A 557K39M	41.40	20.24	29.50	56.70	77.80	13.50	10.10



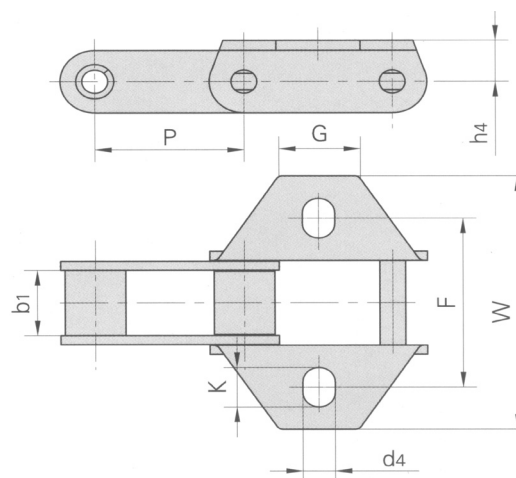
RAK CHAIN NO.	P	b1	G	F	W	h4	d4
	MM	MM	MM	MM	MM	MM	MM
A 557K27S	41.40	20.24	28.60	57.15	79.35	14.30	13.10



### C Type Chains With Attachments



RAK CHAIN NO.	P	b1	G	F	W	h4	d4
	MM	MM	MM	MM	MM	MM	MM
CA 557F1	41.40	20.24	60.00	53.94	76.20	14.60	9.90

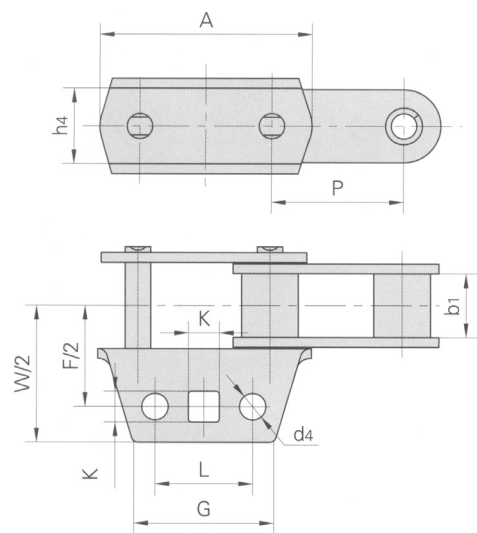


RAK CHAIN NO.	P	b1	G	F	W	h4	d4	K
	MM	MM	MM	MM	MM	MM	MM	MM
CA 557F2	41.40	20.24	22.23	53.98	79.30	14.30	9.90	13.6

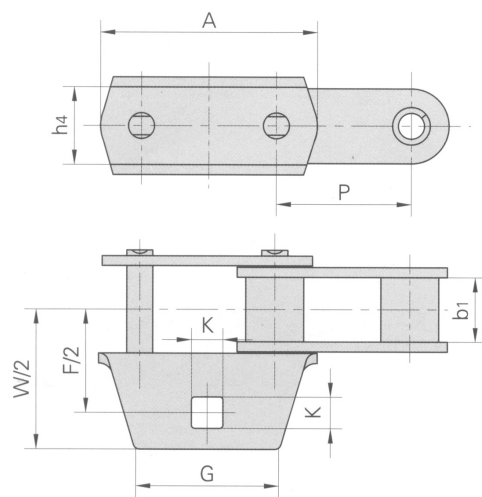
- We are manufacturers of engineering and special chains, for every type of industry.

- In the chain market, our products are of the highest quality, and are manufactured under the international standards ANSI B29.1 M-2002 (DIN 3183) and ISO 606.

C Type Chains With Attachments



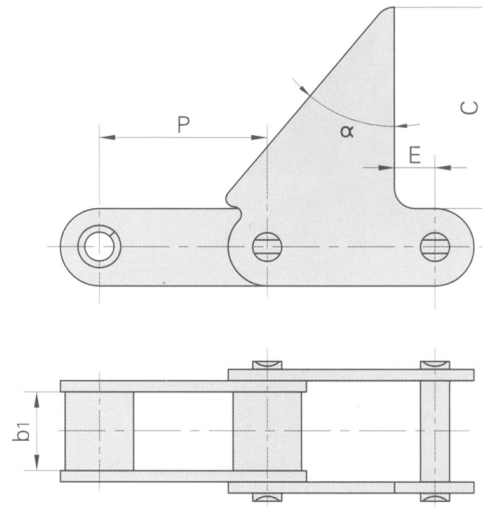
RAK CHAIN NO.	P	b1	A	L	G	F	W	h4	d4	k
	MM	MM	MM	MM	MM	MM	MM	MM	MM	MM
CA 557F3	41.40	20.24	66.55	30.22	44.45	64.14	86.60	23.90	8.25	9.70



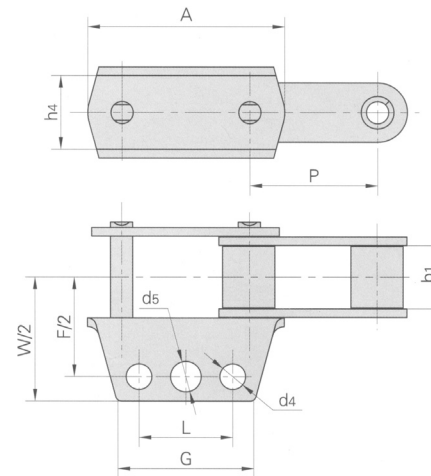
RAK CHAIN NO.	P	b1	G	F	W	h4	d4	K
	MM	MM	MM	MM	MM	MM	MM	MM
CA 557F4	41.40	20.24	66.55	44.45	64.14	86.60	23.90	9.70



### C Type Chains With Attachments



RAK CHAIN NO.	P	b1	C	$\alpha$	E
	MM	MM	MM		MM
CA 550F6	41.40	19.81	50.00	40°	10.00



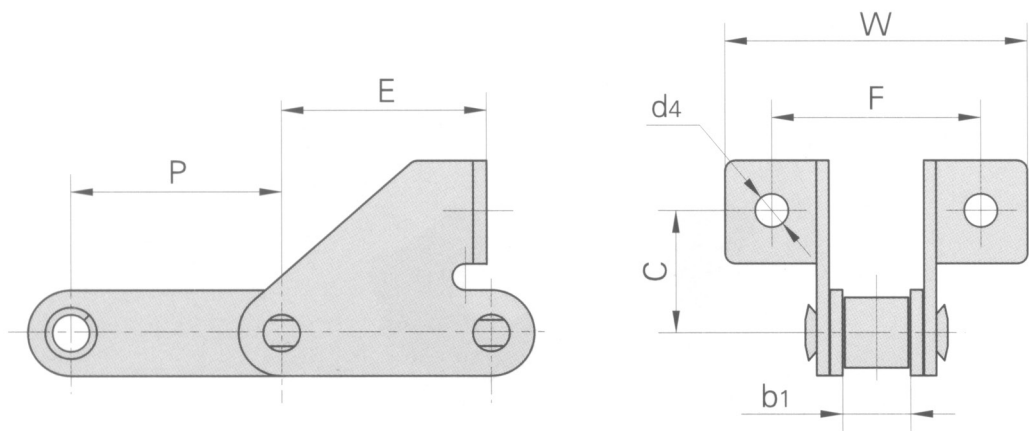
RAK CHAIN NO.	P	b1	A	L	G	F	W	h4	d4	d5
	MM	MM	MM	MM	MM	MM	MM	MM	MM	MM
CA 550F7	41.40	19.81	63.50	30.22	44.45	64.10	81.40	23.88	8.25	9.90

- We are manufacturers of engineering and special chains, for every type of industry.

- In the chain market, our products are of the highest quality, and are manufactured under the international standards ANSI B29.1 M-2002 (DIN 3183) and ISO 606.



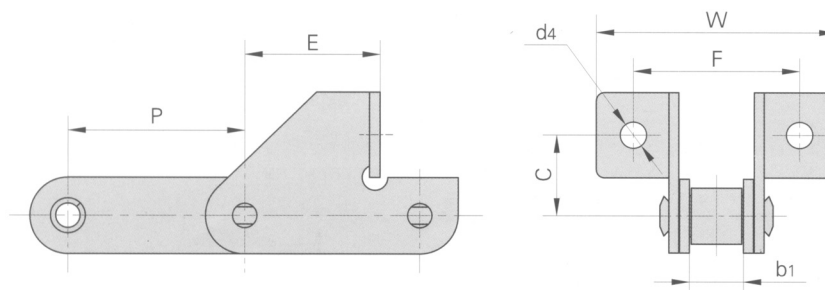
C Type Chains With Attachments



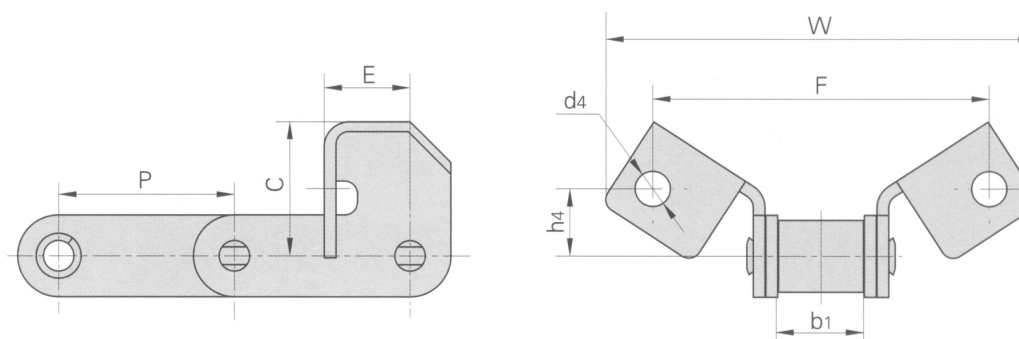
RAK CHAIN NO.	P	b1	E	F	W	C	d4
	MM	MM	MM	MM	MM	MM	MM
CA 550SDF1	41.40	19.81	35.00	58.00	85.00	20.50	8.50
CA550SDF2	41.40	19.81	32.50	62.00	84.00	20.00	8.60
CA550SDF3	41.40	19.81	35.00	58.00	85.00	20.50	6.50
CA550SDF6	41.40	19.81	44.00	58.00	85.00	20.50	6.50
CA550SDF7	41.40	19.81	42.50	62.00	89.00	20.00	8.60
CA5505SD	41.40	20.24	33.00	57.80	83.50	20.00	6.70
CA550SDF8	41.40	19.81	33.00	58.00	85.90	20.50	6.50



### C Type Chains With Attachments



RAK CHAIN NO.	P	b1	E	F	W	C	d4
	MM	MM	MM	MM	MM	MM	MM
CA 550SD	41.10	19.81	36.90	47.60	68.20	31.00	8.70
CA550SDF4	41.40	19.81	36.90	47.60	89.00	31.00	8.70

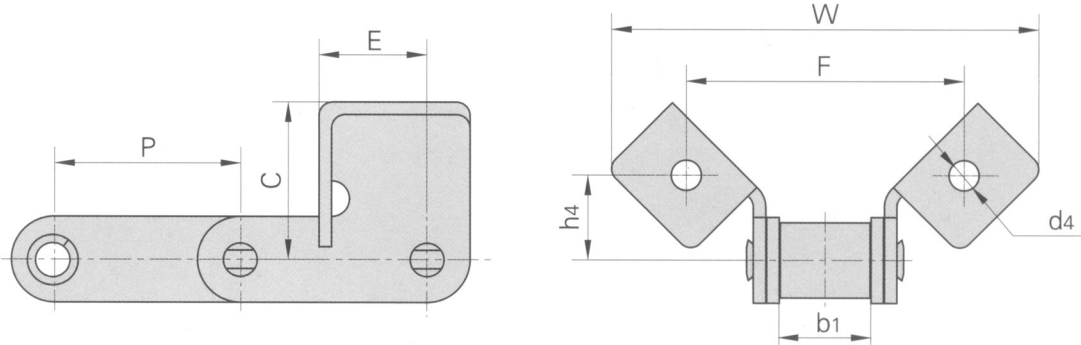


RAK CHAIN NO.	P	b1	E	C	F	W	h4	d4
	MM	MM	MM	MM	MM	MM	MM	MM
CA 550F14	41.40	19.80	20.24	31.75	79.40	101.60	15.90	8.33
CA550SDF16	41.40	20.00	22.30	39.00	78.00	109.20	17.70	8.00

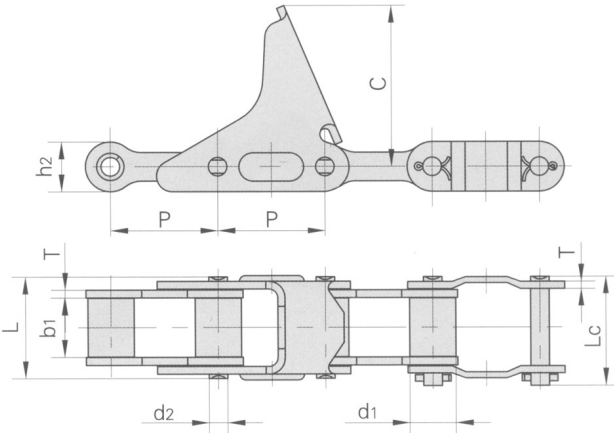
- We are manufacturers of engineering and special chains, for every type of industry.

- In the chain market, our products are of the highest quality, and are manufactured under the international standards ANSI B29.1 M-2002 (DIN 3183) and ISO 606.

C Type Chains With Attachments



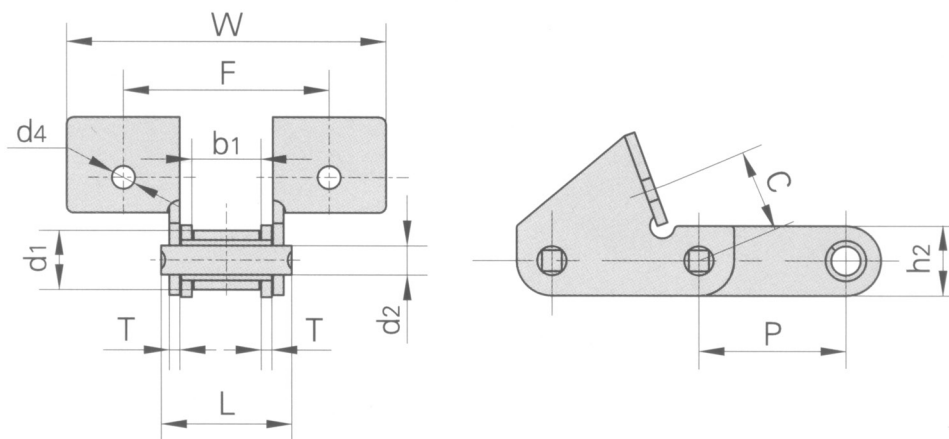
RAK CHAIN NO.	P	b1	E	C	F	W	h4	d4
	MM	MM	MM	MM	MM	MM	MM	MM
CA 550F15	41.40	19.81	24.00	35.26	61.98	95.25	19.05	6.73
CA550F17	41.40	19.81	23.68	40.89	114.30	143.70	20.57	9.91
CA550VF13	41.40	19.05	25.40	59.60	79.35	135.45	28.60	8.74



RAK CHAIN NO.	PITCH	ROLLER DIAMETER	WIDTH BETWEEN INNER PLATES	PIN DIAMETER	PIN LENGTH		PLATE DIMENSIONS			AVERAGE TENSILE STRENGTH	WEIGHT PER METER
	P	d1	b1 MIN	d2 MAX	L MAX	Lc MAX	h2 MAX	T MAX	C	LB	KG/M
	MM	MM	MM	MM	MM	MM	MM	MM	MM		
CA 555F1	41.40	17.85	23.00	8.20	39.50	42.40	20.00	3.00	84	8920	2.99
CA555F2	41.40	17.85	23.00	8.20	39.50	42.40	20.00	3.00	62.5	8920	2.82



### C Type Chains With Attachments



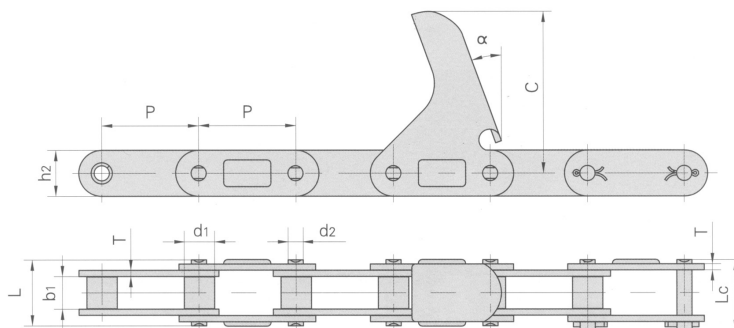
RAK CHAIN NO.	P	C	F	W	d4
	MM	MM	MM	MM	MM
CA 550F1V	41.40	23.40	58.00	90.00	6.5

RAK CHAIN NO.	PITCH	ROLLER DIAMETER	WIDTH BETWEEN INNER PLATES	PIN DIAMETER	PIN LENGTH	PLATE DIMENSION		AVERAGE TENSILE STRENGTH	WEIGHT PER METER
	P	d1	b1 MIN	d2 MAX	L MAX	h2 MAX	T MAX		
	MM	MM	MM	MM	MM	MM	MM	LB	KG/M
CA 550F1V	41.40	16.80	19.50	8.28	36.7	19.80	3.00	9450	2.5

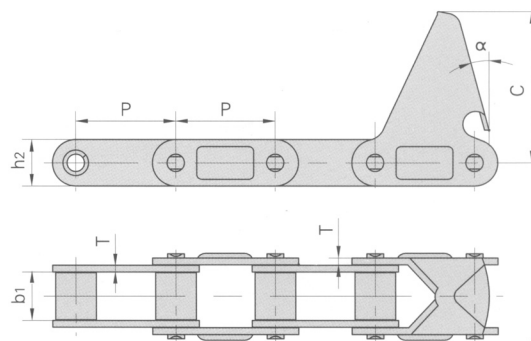
- We are manufacturers of engineering and special chains, for every type of industry.

- In the chain market, our products are of the highest quality, and are manufactured under the international standards ANSI B29.1 M-2002 (DIN 3183) and ISO 606.

## C Type Chains With Attachments

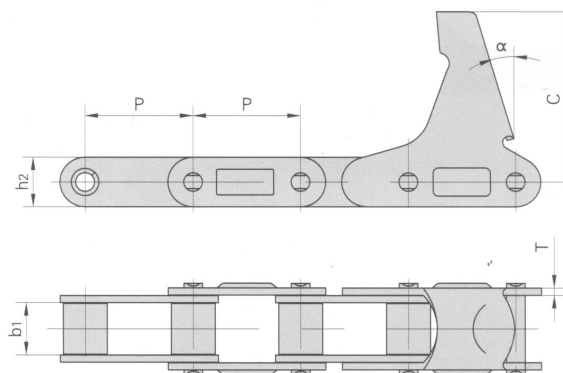


RAK CHAIN NO.	PITCH	ROLLER DIAMETER	WIDTH BETWEEN INNER PLATES	PIN DIAMETER	PIN LENGTH		PLATE DIMENSION				AVERAGE TENSILE STRENGTH	WEIGHT PER METER
	P	d1 max	b1 min	d2 max	L max	Lc max	h2 max	T	C	$\alpha$	LB	KG/M
	MM	MM	MM	MM	MM	MM	MM	MM	MM			
CA2060-C6E	38.1	11.91	12.57	5.94	25.9	28.3	18.0	2.42	63.5	20.0°	6996	1.40
CA2060H-C6E	38.1	11.91	12.57	5.94	31.0	31.6	18.0	3.25	63.5	22.5°	6996	1.78

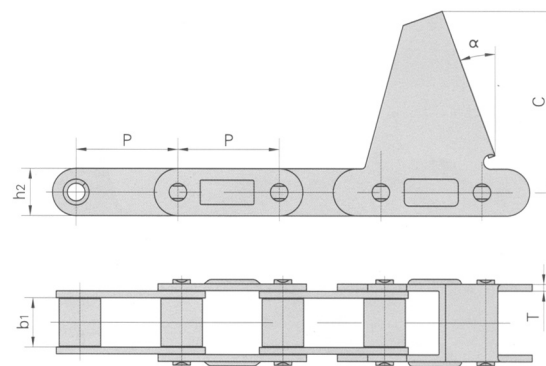


RAK CHAIN NO.	P	b1	h2	T	C	$\alpha$
	MM	MM	MM	MM	MM	
CA550C6E	41.40	19.81	19.30	2.80	55.6	20°
CA550C11E	41.40	19.81	19.30	2.80	63.5	15°
CA550C11EJ	41.40	19.81	19.30	2.80	66.0	17°
CA550C13E	41.40	19.81	19.30	2.80	92.0	15°
CA550F4C6E	41.40	20.24	19.05	2.80	55.6	22°
CA620C13E	42.01	24.51	20.20	3.25	92.0	15°
CA550C6EF1	41.4	19.81	19.30	2.8	50.0	15°

### C Type Chains With Attachments



RAK CHAIN NO.	P	b1	h2	T	C	$\alpha$
	MM	MM	MM	MM	MM	
C550LV41N	41.4	19.81	19.3	2.8	68.5	15°

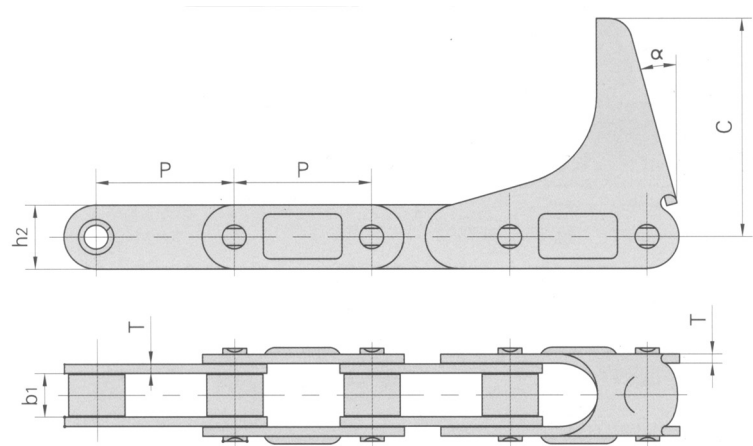


RAK CHAIN NO.	P	b1	h2	T	C	$\alpha$
	MM	MM	MM	MM	MM	
CA550CPE	41.4	19.81	19.3	2.8	74.5	20°

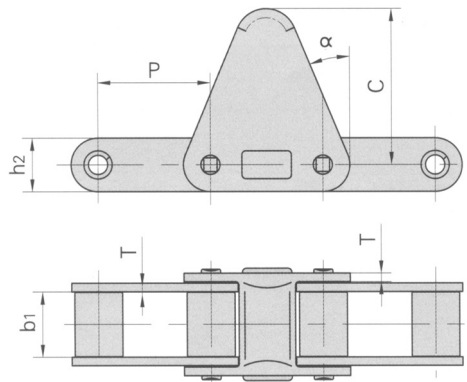
- We are manufacturers of engineering and special chains, for every type of industry.

- In the chain market, our products are of the highest quality, and are manufactured under the international standards ANSI B29.1 M-2002 (DIN 3183) and ISO 606.

C Type Chains With Attachments



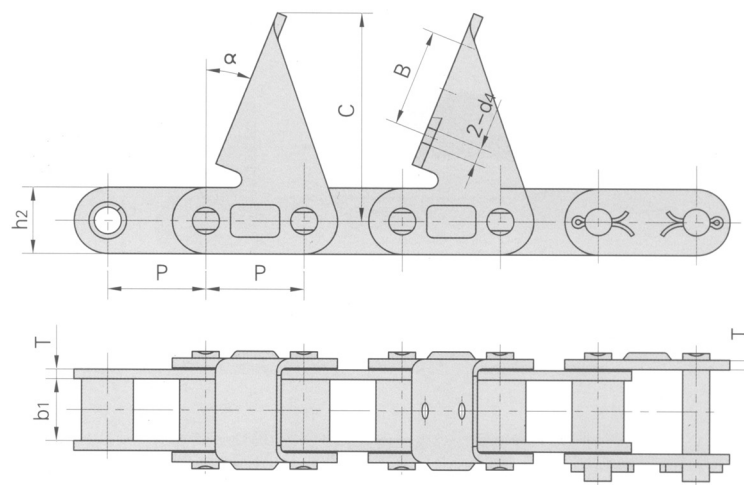
RAK CHAIN NO.	P	b1	h2	T	C	$\alpha$
	MM	MM	MM	MM	MM	
C555C6E	41.4	12.7	19.3	3.10	63.5	15°
CA555C6EJ	41.4	12.7	19.3	3.25	66.0	15°



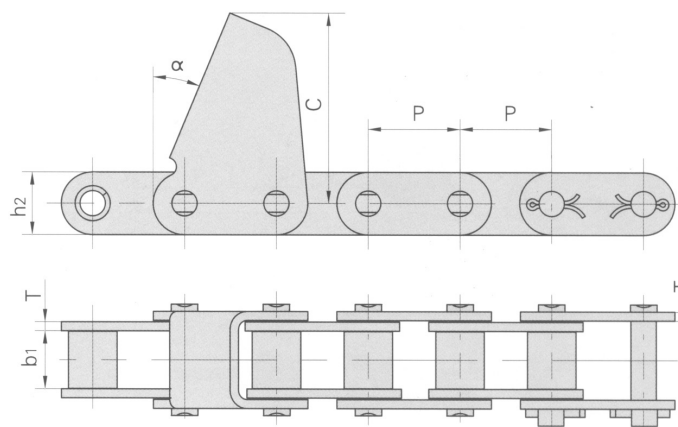
RAK CHAIN NO.	P	b1	h2	T	C	$\alpha$
	MM	MM	MM	MM	MM	
CA620C30E	42.01	24.51	20.2	3.25	58.7	22.5°

RAK

### C Type Chains With Attachments



RAK CHAIN NO.	P	b1	h2	B	d4	T	C	α
	MM	MM	MM	MM	MM	MM	MM	
CA627CPE	30.0	19.05	20.5			3.0	64.0	22°
CA627CPEF3	30.0	19.05	20.5	30.0	5.0	3.0	64.0	22°



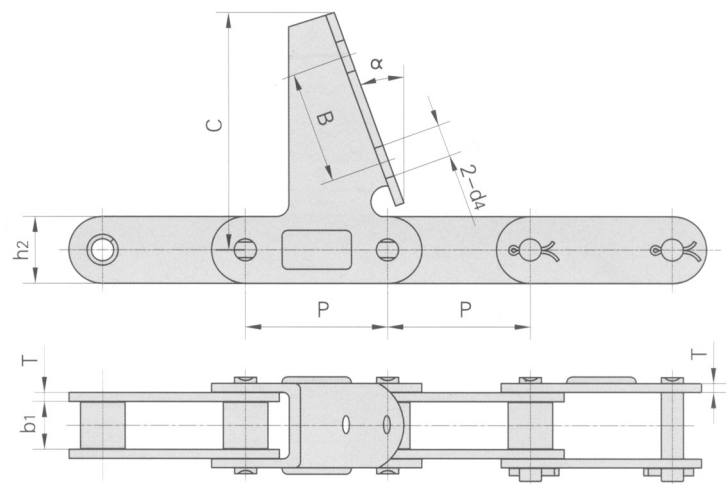
RAK CHAIN NO.	P	b1	h2	T	C	α
	MM	MM	MM	MM	MM	
CA627CPEF1	30.0	19.05	20.5	3.0	62.5	22.5°
CA627CPEF2	30.0	19.05	20.5	3.0	62.5	22.5°

- We are manufacturers of engineering and special chains, for every type of industry.

- In the chain market, our products are of the highest quality, and are manufactured under the international standards ANSI B29.1 M-2002 (DIN 3183) and ISO 606.



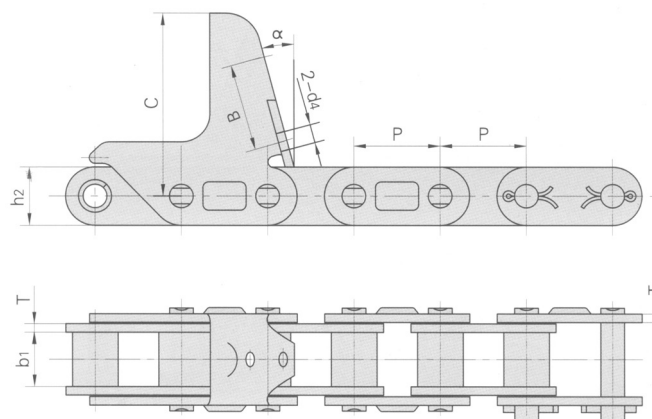
C Type Chains With Attachments



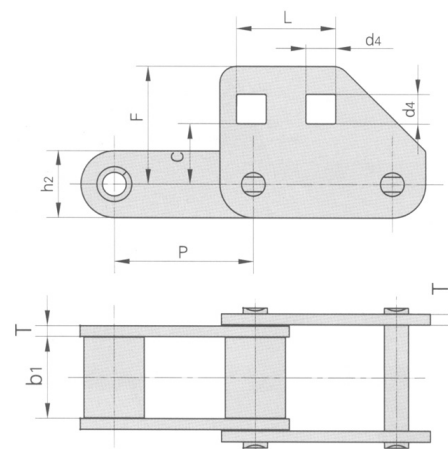
RAK CHAIN NO.	P	b1	h2	d4	T	B	C	$\alpha$
	MM	MM	MM	MM	MM	MM	MM	
CA2060H7AUE	38.1	12.57	18.0	8.5	3.25	30	57.2	22.5°
CA550CPEF1	41.4	19.81	19.3		2.8		63.5	15°

RAK

### C Type Chains With Attachments



RAK CHAIN NO.	P	b1	h2	B	d4	T	C	$\alpha$
	MM	MM	MM	MM	MM	MM	MM	
CA627M40A	30.0	19.05	20.5	36.1	6.5	3.0	63.0	15°

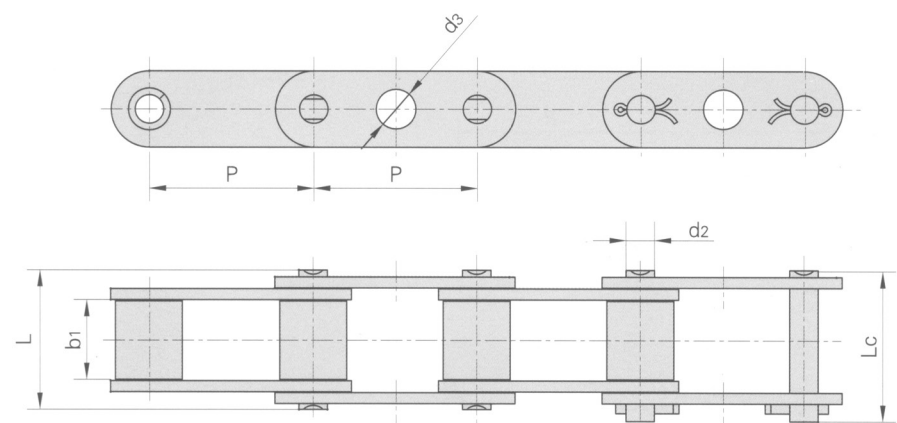


RAK CHAIN NO.	P	b1	L	T	C	F	d4
	MM	MM	MM	MM	MM	MM	MM
CA620F2	42.01	24.51	30	3.25	18.4	35.9	9

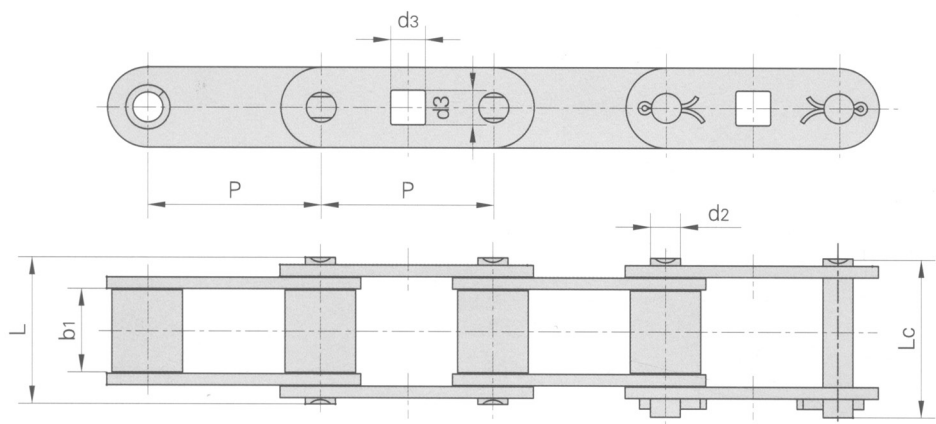
- We are manufacturers of engineering and special chains, for every type of industry.

- In the chain market, our products are of the highest quality, and are manufactured under the international standards ANSI B29.1 M-2002 (DIN 3183) and ISO 606.

C Type Chains With Attachments



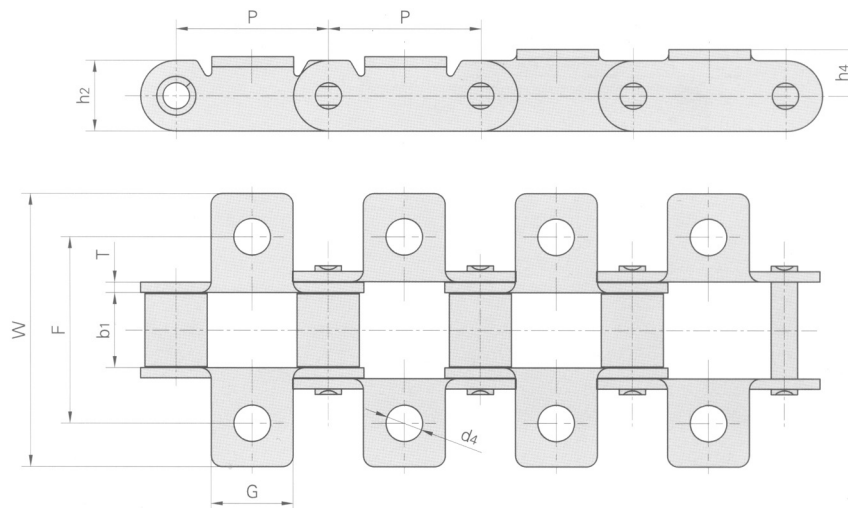
RAK CHAIN NO.	P	b1	d2	d3	L	Lc
	MM	MM	MM	MM	MM	MM
CA550GKF1	41.4	19.81	7.19	10	35	38



RAK CHAIN NO.	P	b1	d2	d3	L	Lc
	MM	MM	MM	MM	MM	MM
CA550GKF2	41.4	19.81	7.19	8.3	35	38

RAK

### C Type Chains With Attachments

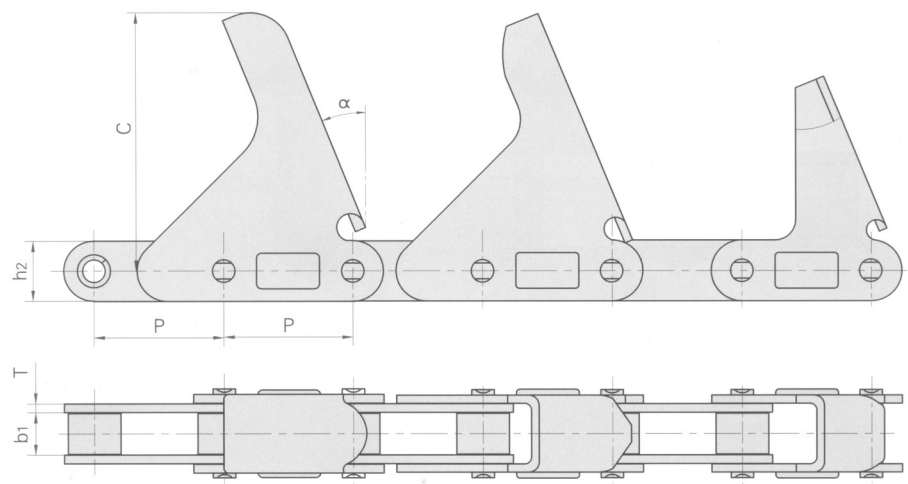


RAK CHAIN NO.	P	b1	G	F	W	h2	h4	T	d4
	MM	MM	MM	MM	MM	MM	MM	MM	MM
CA550K11	41.40	19.81	22.2	50.8	75.4	19.3	10.7	2.80	9.92
CA550K1F8	41.40	19.81	22.2	50.8	75.4	19.3	10.7	2.80	6.75
CA550K17	41.40	19.81	22.2	54.0	76.2	19.3	12.7	2.80	6.75
CA550K20	41.40	19.81	22.2	50.8	76.2	19.3	12.7	2.80	6.75
CA550K22	41.40	19.81	22.2	54.0	76.2	19.3	12.7	2.80	9.53
CA620K1F2	42.01	24.51	22.2	62.7	80.2	20.2	11.5	3.25	6.75
CA620KIS	42.01	24.51	22.2	62.7	80.2	20.2	11.5	3.25	8.33

- We are manufacturers of engineering and special chains, for every type of industry.

- In the chain market, our products are of the highest quality, and are manufactured under the international standards ANSI B29.1 M-2002 (DIN 3183) and ISO 606.

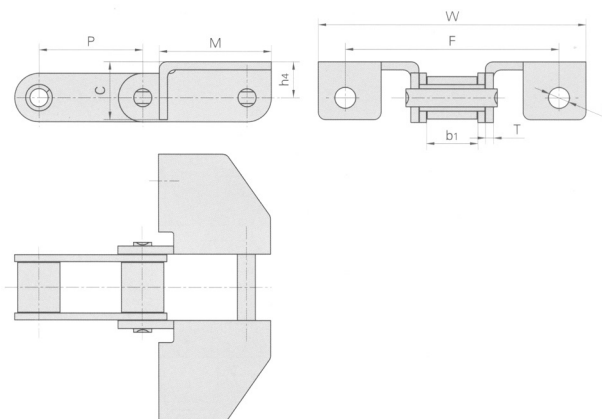
C Type Chains With Attachments



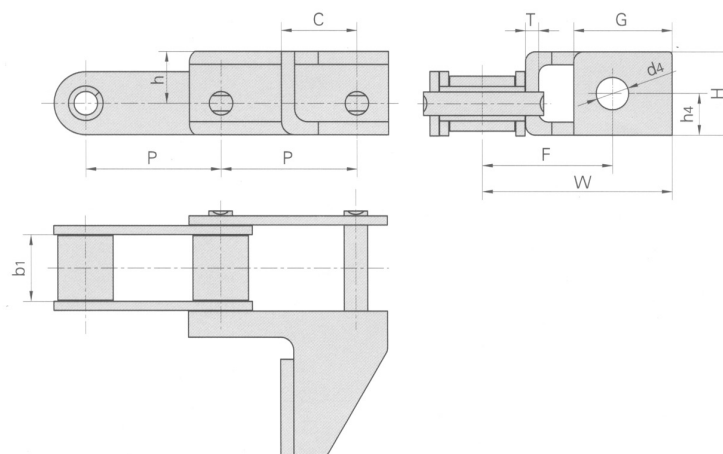
RAK CHAIN NO.	P	b1	h2	T	C	$\alpha$
	MM	MM	MM	MM	MM	
CA2060HC2E	38.1	12.57	18.0	3.25	76.2	22.5°
CA2060HC4E	38.1	12.57	18.0	3.25	75.8	22.5°
CA2060HC5E	38.1	12.57	18.0	3.25	57.2	22.5°



### C Type Chains With Attachments



RAK CHAIN NO.	P	b1	M	C	F	W	T	h4	d4
	MM	MM	MM	MM	MM	MM	MM	MM	MM
CA550F7A	41.4	19.81	44.5	23.3	84.9	106.4	3.25	14.3	8.33
CA550G57	41.4	19.81	44.5	23.3		106.4	3.25	14.3	

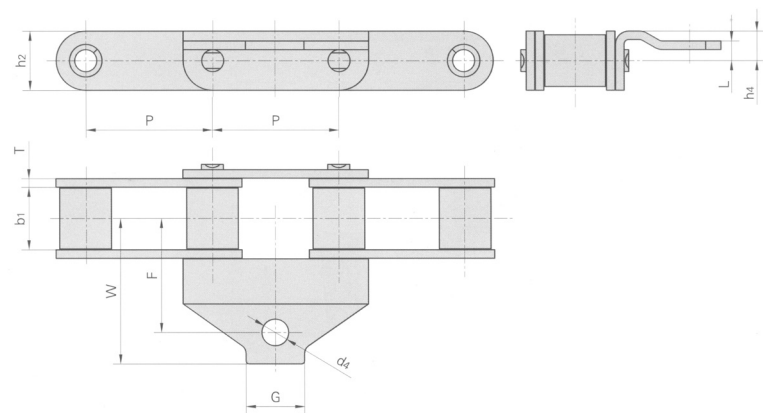


RAK CHAIN NO.	P	b1	C	h	H	G	h4	F	W	T	d4
	MM	MM	MM	MM	MM	MM	MM	MM	MM	MM	MM
CA550G50	41.4	19.81	23.0	17.5	27.2	30.0	12.9	39.7	57.9	4.0	9.92
CA550G50S	41.4	19.81	23.0	15.9	25.6	30.0	12.9	39.7	57.9	4.0	9.92

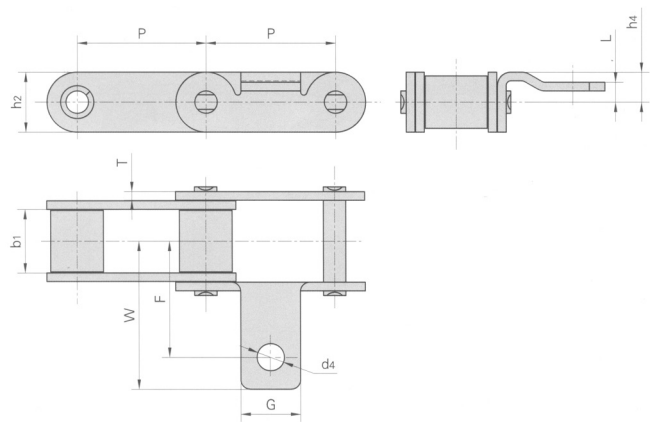
- We are manufacturers of engineering and special chains, for every type of industry.

- In the chain market, our products are of the highest quality, and are manufactured under the international standards ANSI B29.1 M-2002 (DIN 3183) and ISO 606.

C Type Chains With Attachments



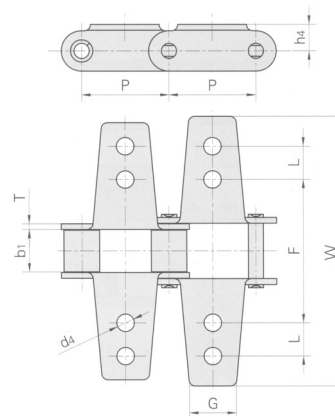
RAK CHAIN NO.	P	b1	G	F	W	h2	L	h4	T	d4
	MM	MM	MM	MM	MM	MM	MM	MM	MM	MM
CA550AID	41.4	19.81	19.1	37.3	47.6	19.3	6.4	9.65	2.8	8.73



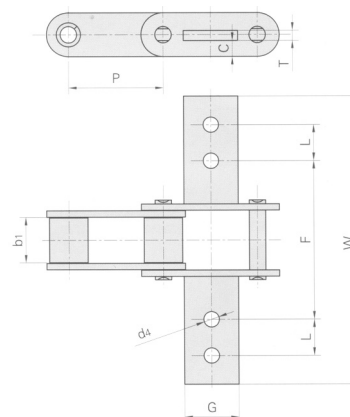
RAK CHAIN NO.	P	b1	G	F	W	h2	L	h4	T	d4
	MM	MM	MM	MM	MM	MM	MM	MM	MM	MM
CA550AID	41.4	19.81	19.1	37.3	47.6	19.3	6.4	9.65	2.8	8.73



### C Type Chains With Attachments



RAK CHAIN NO.	P	b1	L	G	F	W	h4	T	d4
	MM	MM	MM	MM	MM	MM	MM	MM	MM
CA550K6	41.40	19.81	15.9	22.2	68.3	128.6	12.7	2.80	8.33
CA620K12	42.01	24.51	15.9	22.2	69.9	130.2	23.8	3.25	6.75



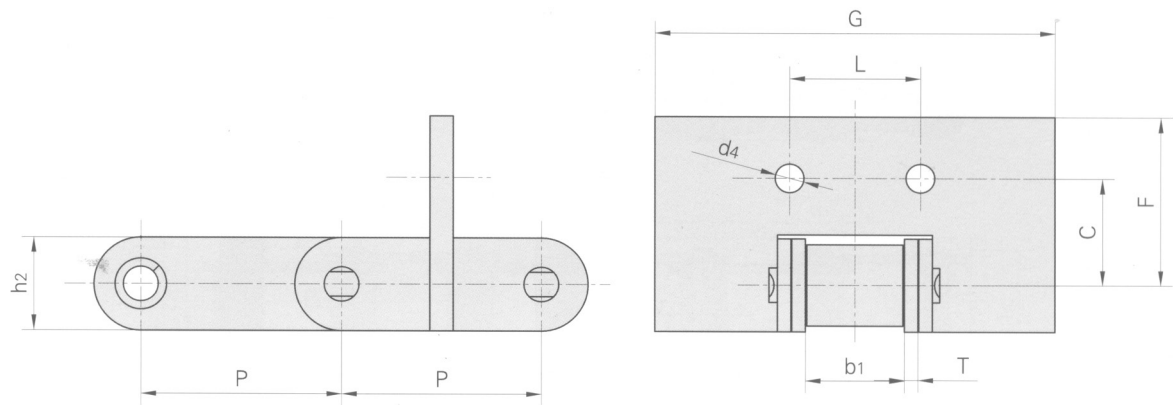
RAK CHAIN NO.	P	b1	G	L	F	W	T	C	d4
	MM	MM	MM	MM	MM	MM	MM	MM	MM
CA550K8	41.40	19.81	23.8	15.9	69.9	127.0	4.3	7.1	6.75
CA550K9	41.40	19.81	23.8	15.9	69.9	127.0	4.3	7.9	6.75

- We are manufacturers of engineering and special chains, for every type of industry.

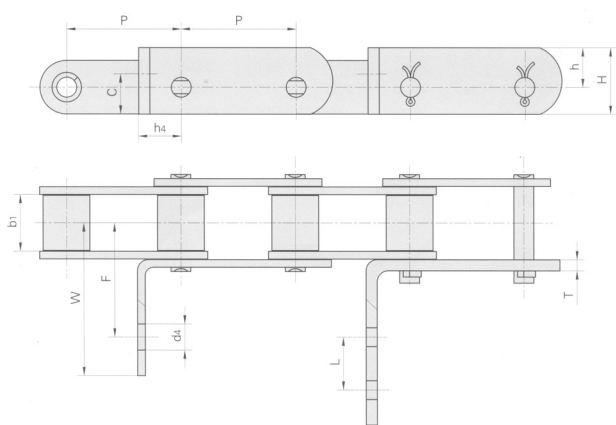
- In the chain market, our products are of the highest quality, and are manufactured under the international standards ANSI B29.1 M-2002 (DIN 3183) and ISO 606.



C Type Chains With Attachments



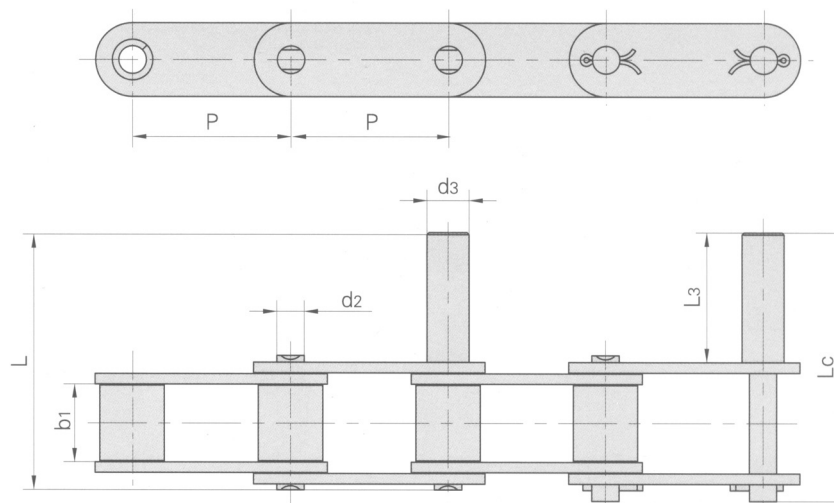
RAK CHAIN NO.	P	b1	C	F	L	G	h2	T	d4
	MM	MM	MM	MM	MM	MM	MM	MM	MM
CA550F11	41.4	19.81	22.2	34.9	27.0	82.6	19.3	2.8	5.95



RAK CHAIN NO.	P	b1	C	h	H	h4	F	L	W	T	d4
	MM	MM	MM	MM	MM	MM	MM	MM	MM	MM	MM
CA550GX	41.4	19.81	14.5	14.3	24.0	15.5	41.7	19.1	73.4	4.00	6.75
CA550G27	41.4	19.81	14.5	14.3	24.0	15.9	41.7		55.2	2.80	8.33
CA550G27S	41.4	19.81	14.5	14.3	24.0	15.9	41.7		55.2	3.25	8.33



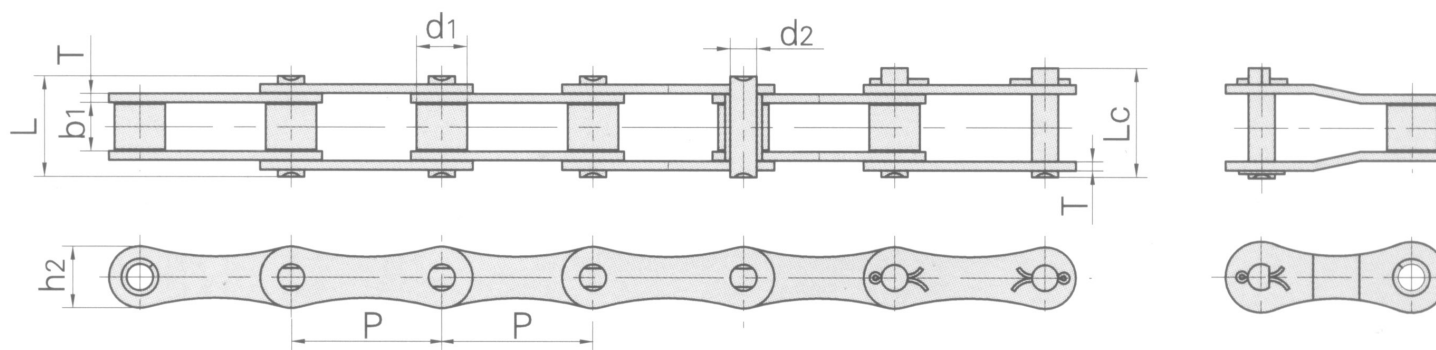
### C Type Chains With Attachments



RAK CHAIN NO.	P	b1	d2	d3	L3	L	Lc
	MM	MM	MM	MM	MM	MM	MM
CA550D1	41.4	19.81	7.19	12.7	50.80	84.5	87.5
CA550D2	41.4	19.81	7.19	7.19	31.75	65.4	68.4
CA550D4	41.4	19.81	7.19	11.0	34.00	67.7	70.7

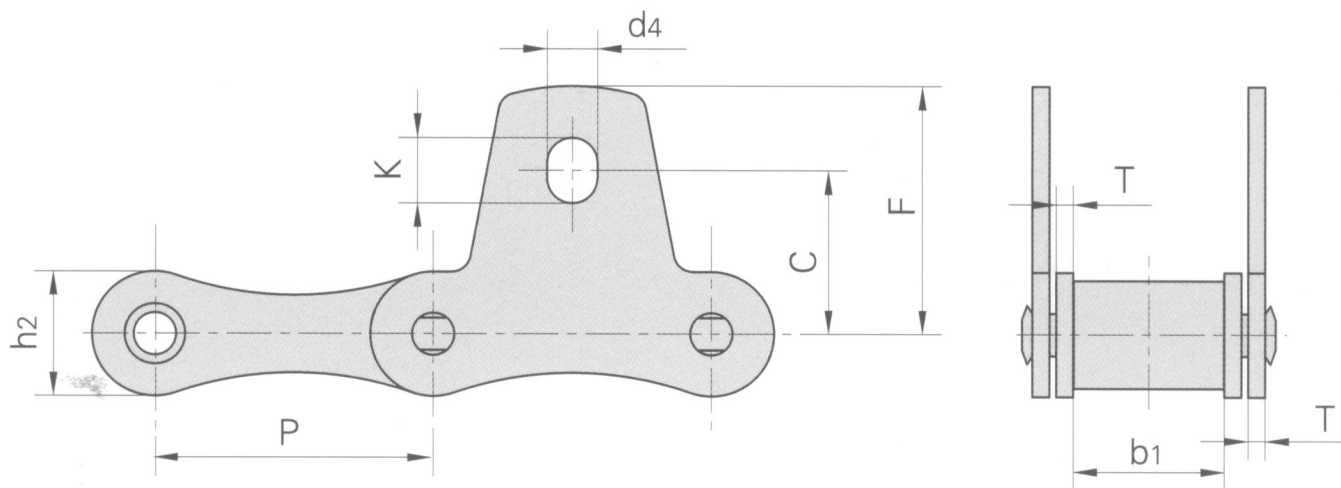
- We are manufacturers of engineering and special chains, for every type of industry.

- In the chain market, our products are of the highest quality, and are manufactured under the international standards ANSI B29.1 M-2002 (DIN 3183) and ISO 606.



RAK CHAIN NO.	PITCH	ROLLER DIAMETER	WIDTH BETWEEN INNER PLATES	PIN DIAMETER	PIN LENGTH		PLATE DIMENSIONS		AVERAGE TENSILE STRENGTH	WEIGHT PER METER
	P	d1 MAX	b1 MIN	d2 MAX	L MAX	Lc MAX	h2 MAX	T MAX		
	MM	MM	MM	MM	MM	MM			LB	KG/M
V32	29.21	11.43	15.88	4.45	26.7	28.8	13.2	1.8	2150	0.86
V42	34.93	14.27	19.05	7.00	34.3	37.0	19.8	2.8	6780	1.60
V45	41.40	15.24	22.23	5.72	37.7	40.4	17.3	2.8	4640	1.66
V51	38.10	15.24	16.00	5.72	30.9	33.8	17.3	2.8	6980	1.48
V52	38.10	15.24	22.23	5.72	37.7	40.4	17.3	2.8	5140	1.68
V55	41.40	17.78	22.23	5.72	37.7	40.4	17.3	2.8	4530	
V62	41.91	19.05	26.20	5.72	40.3	43.0	17.3	2.5	6560	
V77	58.34	18.26	22.23	8.90	43.2	46.4	26.2	4.0	10760	
CA642	41.40	15.88	19.00	8.28	36.10	39.10	21.20	3.00	11860	1.98
CA650	50.80	25.00	18.90	9.53	40.40	44.70	25.00	4.00	22340	3.49
CA650F2	50.80	20.00	18.90	9.53	40.40	44.70	25.00	4.00	22340	2.98
CA650F1	50.80	25.00	19.00	11.28	49.20	53.70	25.00	3.5/5.0	31250	4.36

### V Type Chains With Attachments

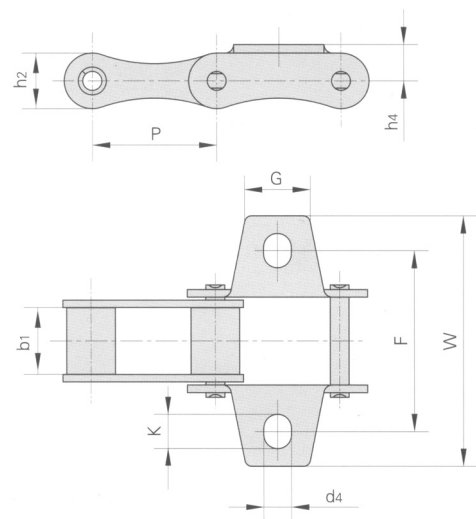


RAK CHAIN NO.	P	b1	h2	T	C	F	d4	K
	MM	MM	MM	MM	MM	MM	MM	MM
V32SK1	29.21	15.88	13.2	1.8	17.3	26.2	5.3	6.9
V42SK1	34.93	19.05	19.8	2.8	23.6	34.3	8.3	11.5
V45SK1	41.40	22.23	17.3	2.8	19.8	30.2	8.3	11.5
V52SK1	38.10	22.23	17.3	2.8	22.1	31.8	8.3	9.9
V55SK1	41.40	22.23	17.3	2.8	19.8	30.2	8.3	11.5
V62SK1	41.91	26.20	17.3	2.5	24.6	38.6	8.3	14.7
V77SK1	58.34	22.23	26.2	4.0	36.3	50.0	8.3	11.5

- We are manufacturers of engineering and special chains, for every type of industry.

- In the chain market, our products are of the highest quality, and are manufactured under the international standards ANSI B29.1 M-2002 (DIN 3183) and ISO 606.

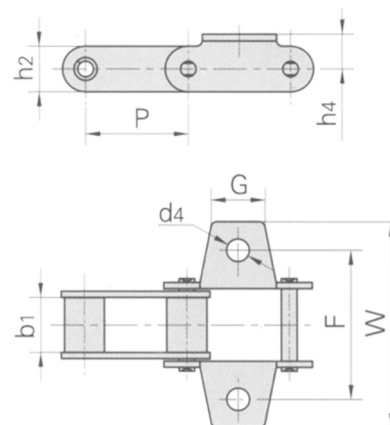
V Type Chains With Attachments



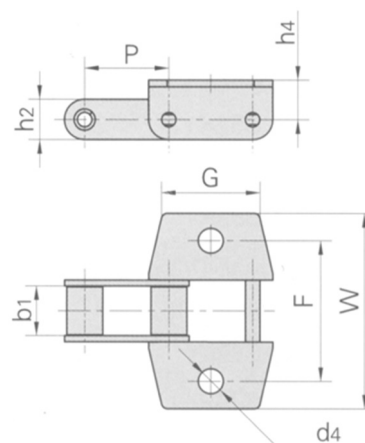
RAK CHAIN NO.	P	b1	G	F	W	h4	d4	K	h2
	MM	MM	MM	MM	MM	MM	MM	MM	MM
V32K1	29.21	15.88	15.0	42.9	61.0	8.6	5.3	6.9	13.2
V42K1	34.93	19.05	17.5	54.0	74.9	14.0	8.3	11.5	19.8
V45K1	41.40	22.23	22.0	54.0	75.0	11.4	8.5	11.7	17.3
V51K1	38.10	16.00	19.0	49.8	71.5	11.4	8.3	9.9	17.3
V52K1	38.10	22.23	19.0	58.8	78.0	11.4	8.3	9.9	17.3
V55K1	41.40	22.23	22.0	54.0	75.0	11.4	8.5	11.7	17.3
V62KK	41.91	26.20	22.0	66.8	95.4	11.4	8.3	14.7	17.3
V77K1	58.34	22.23	25.0	76.2	102.0	20.8	8.3	11.5	26.2



### V Type Chains With Attachments



RAK CHAIN NO.	P	b1	G	F	W	h4	d4	h2
	MM	MM	MM	MM	MM	MM	MM	MM
V52F1	38.40	18.50	23.00	57.5	80.0	16.0	8.7	17.5

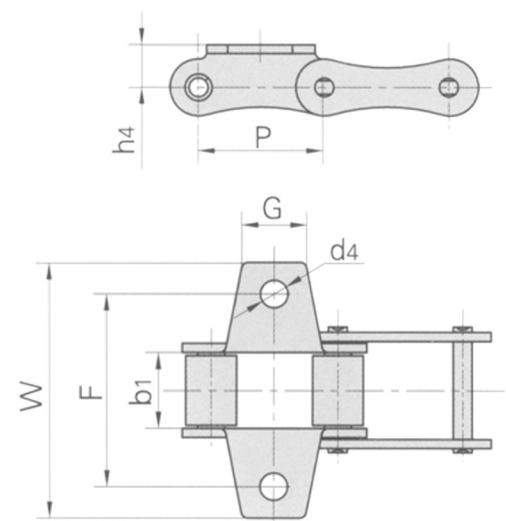


RAK CHAIN NO.	P	b1	G	F	W	h4	d4	h2
	MM	MM	MM	MM	MM	MM	MM	MM
V52F2	38.40	18.50	39.00	57.0	80.0	16.0	10.5	17.5
V52F7	38.40	19.05	39.00	58.4	82.4	14.5	10.5	20.5

- We are manufacturers of engineering and special chains, for every type of industry.

- In the chain market, our products are of the highest quality, and are manufactured under the international standards ANSI B29.1 M-2002 (DIN 3183) and ISO 606.

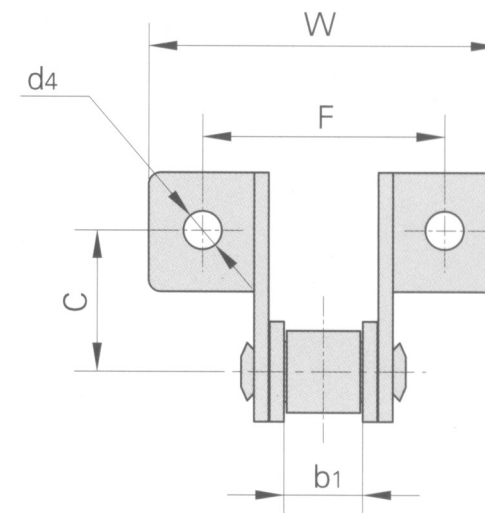
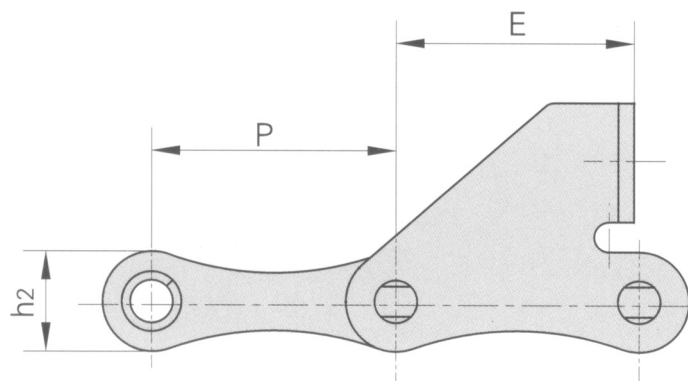
V Type Chains With Attachments



RAK CHAIN NO.	P	b1	G	F	W	h4	d4
	MM	MM	MM	MM	MM	MM	MM
V52F6	38.10	22.23	19.00	51.2	71.7	16.5	8.3

RAK

### V Type Chains With Attachments



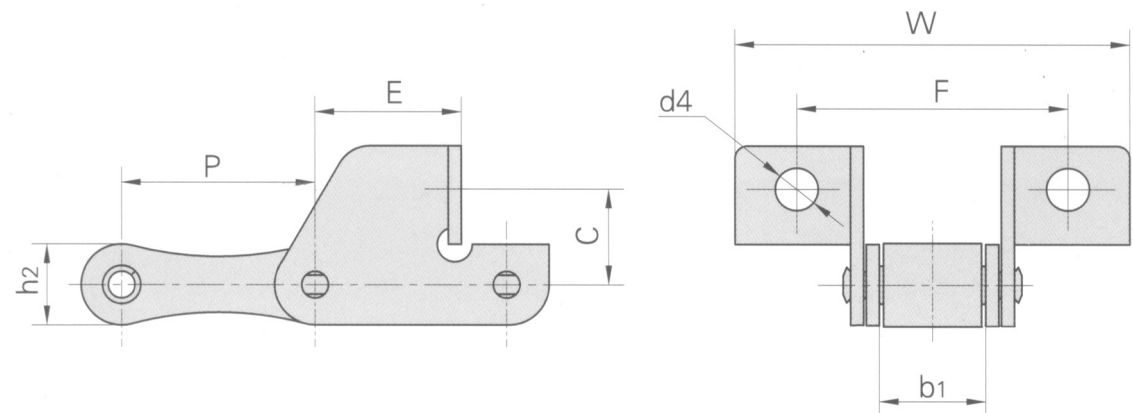
RAK CHAIN NO.	P	b1	C	E	F	W	d4	h2
	MM	MM	MM	MM	MM	MM	MM	MM
V32SD	29.21	15.88	20.0	19.2	58.0	78.0	6.4	13.2
V45F1	41.40	22.23	20.0	37.0	58.0	87.0	6.6	17.3
V45F4	41.40	22.23	20.5	33.2	58.0	85.6	6.6	17.3
V52SD	38.10	22.23	20.0	19.2	62.0	88.5	6.4	17.3
V52F4	38.10	15.80	20.6	37.0	53.8	69.5	6.4	16.7
V52F8	38.10	22.23	20.6	37.0	60.7	76.4	6.4	17.3
V52F9	38.10	18.50	20.0	18.5	54.5	71.0	6.5	16.5
V52LSD	38.10	16.40	20.0	17.5	54.5	71.0	6.5	16.5
V55F2	41.40	22.23	20.00	37.0	58.0	87.0	6.4	17.3
V55F3	41.40	22.23	20.5	33.2	58.0	85.6	6.6	17.3
V55F4	41.40	22.23	20.0	37.0	58.0	87.0	6.6	17.3
V55F6	41.40	22.23	20.0	30.0	58.0	87.0	6.4	17.3
V55F7	41.40	22.23	20.5	33.2	62.0	85.6	6.6	17.3
V62SD	41.91	26.20	20.0	32.6	61.4	92.0	6.4	17.3

- We are manufacturers of engineering and special chains, for every type of industry.

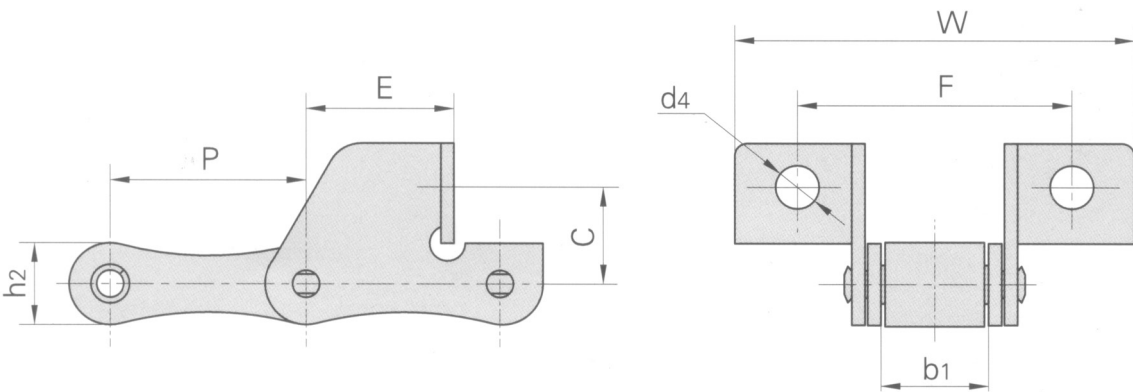
- In the chain market, our products are of the highest quality, and are manufactured under the international standards ANSI B29.1 M-2002 (DIN 3183) and ISO 606.



V Type Chains With Attachments



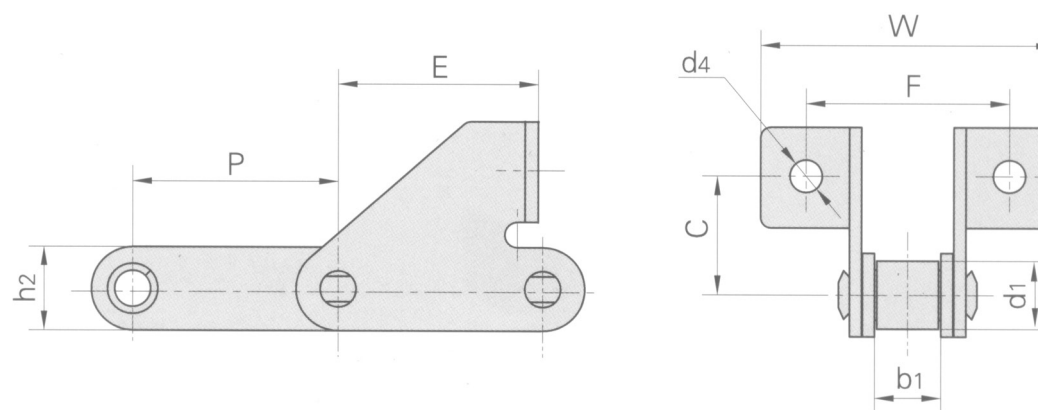
RAK CHAIN NO.	P	b1	C	E	F	W	d4	h2
	MM	MM	MM	MM	MM	MM	MM	MM
V45V	41.40	22.23	21.00	28.50	62.4	83.4	8.8	17.3
V45SDF1	41.40	22.23	17.50	31.90	62.0	91.0	8.5	17.3
V55V	41.40	22.23	21.00	28.50	57.5	83.4	6.5	17.3



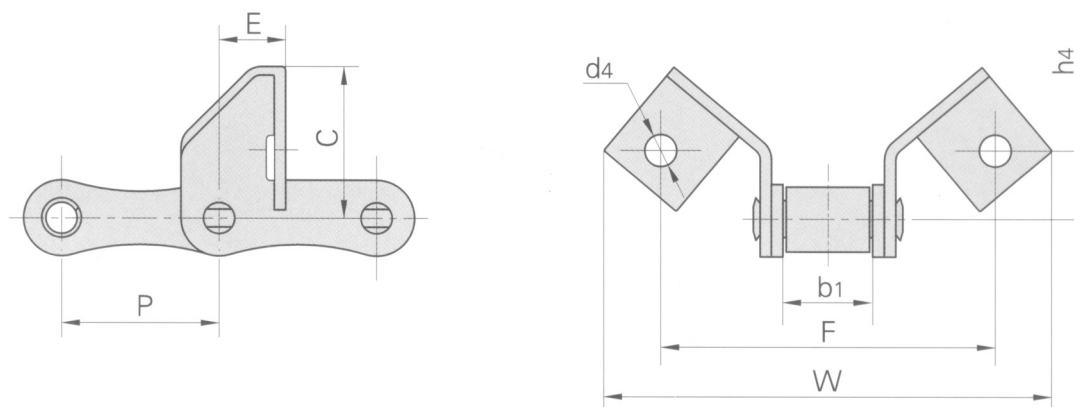
RAK CHAIN NO.	P	b1	C	E	F	W	d4	h2
	MM	MM	MM	MM	MM	MM	MM	MM
V52F2	41.40	22.23	17.00	28.60	58.0	81.2	8.5	17.3
V52F7	38.10	15.80	19.56	20.00	58.0	82.0	6.4	17.3

RAK

### V Type Chains With Attachments



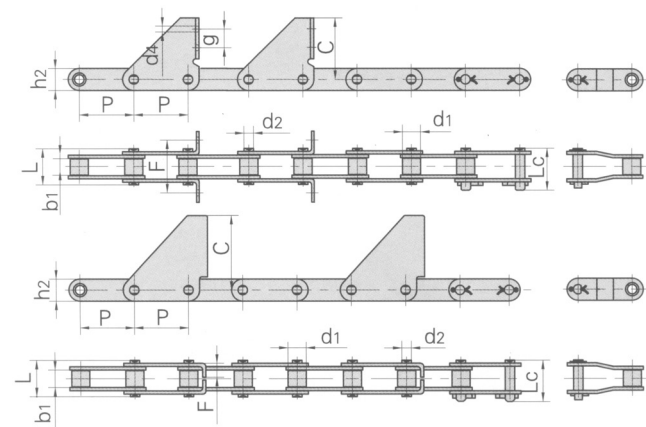
RAK CHAIN NO.	P	d1	b1	C	E	F	W	d4	h2
	MM	MM	MM	MM	MM	MM	MM	MM	MM
V52F3	38.40	15.88	18.50	24.00	37.4	52.0	73.0	8.7	17.5



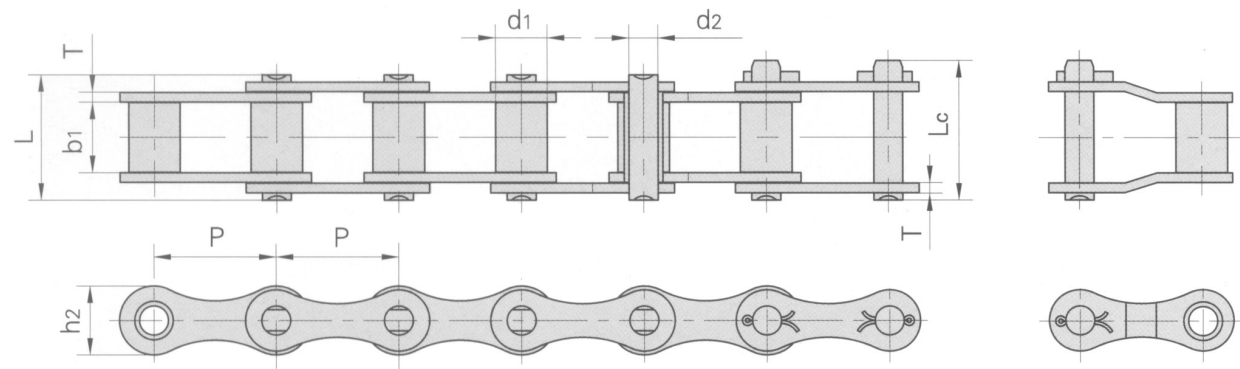
RAK CHAIN NO.	P	b1	C	E	F	W	h4	d4
	MM	MM	MM	MM	MM	MM	MM	MM
55VSE	41.40	22.23	41.00	17.50	88.0	118.0	18.4	8.4
55SVEL	41.40	22.23	41.00	31.30	88.0	118.0	18.4	8.4

- We are manufacturers of engineering and special chains, for every type of industry.

- In the chain market, our products are of the highest quality, and are manufactured under the international standards ANSI B29.1 M-2002 (DIN 3183) and ISO 606.



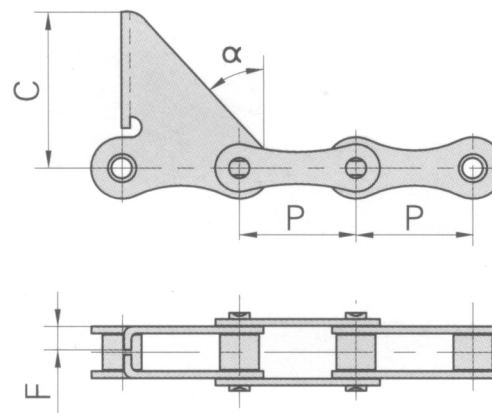
RAK CHAIN NO.	PITCH	ROLLER DIAMETER	WIDTH BETWEEN INNER PLATES	PIN DIAMETER	PIN LENGTH		INNER PLATE DEPTH	ATTACHMENTS DIMENSIONS				AVERAGE TENSILE STRENGTH
	P	d1 MAX	b1 MIN	d2 MAX	L MAX	Lc MAX	h2 MAX	F	C	d4	g	LB
	MM	MM	MM	MM	MM	MM	MM	MM	MM	MM	MM	
210F1A	31.75	10.16	9.40	5.08	20.70	23.30	15.00	35.20	54.00	7.00	23.00	5230
212F1A	38.10	11.91	12.57	5.94	25.90	28.30	18.00	10.92	56.00			7450



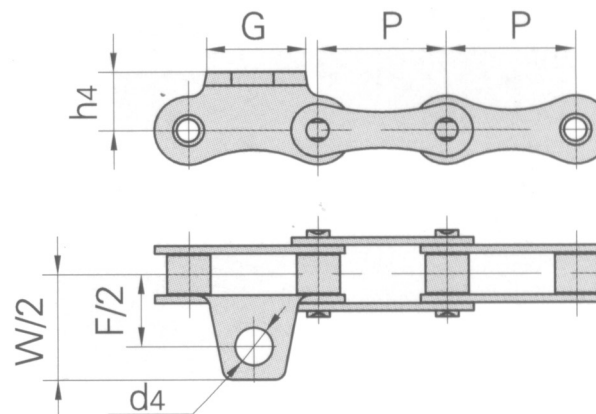
RAK CHAIN NO.	PITCH	ROLLER DIAMETER	WIDTH BETWEEN INNER PLATES	PIN DIAMETER	PIN LENGTH		INNER PLATE DEPTH	PLATE THICKNESS	AVERAGE TENSILE STRENGTH
	P	d1 MAX	b1 MIN	d2 MAX	L MAX	Lc MAX	h2 MAX	T	LB
	MM	MM	MM	MM	MM	MM	MM	MM	
GS38	38.00	16.00	22.00	9.00	39.00	43.00	21.50	3.00	9860

RAK

### Combine Chains



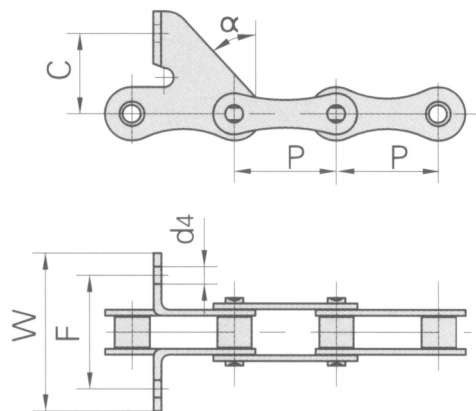
RAK CHAIN NO.	P	C	F	$\alpha$
	MM	MM	MM	
GS38F1	38.0	60.0	14.0	32.5°



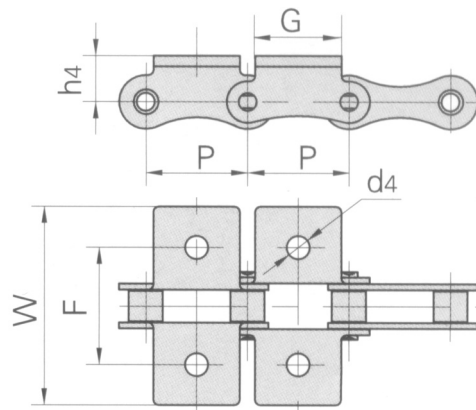
RAK CHAIN NO.	P	G	F	W	h4	d4
	MM	MM	MM	MM	MM	MM
GS38F2	38.0	17.2	59.0	78.1	19.6	11.0

- We are manufacturers of engineering and special chains, for every type of industry.

- In the chain market, our products are of the highest quality, and are manufactured under the international standards ANSI B29.1 M-2002 (DIN 3183) and ISO 606.



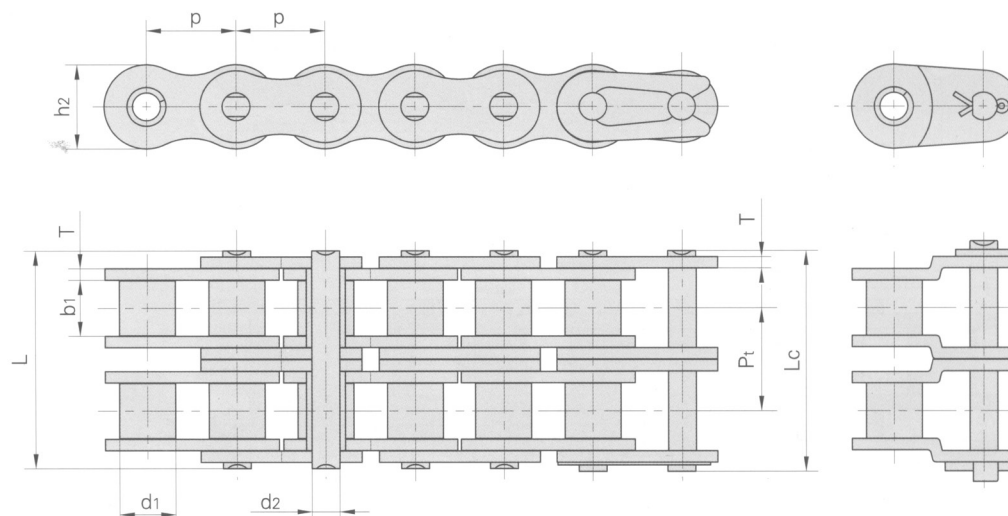
RAK CHAIN NO.	P	C	F	W	$\alpha$	d4
	MM	MM	MM	MM		MM
GS38F3	38.0	30.0	52.0	68.4	43.5°	6.5



RAK CHAIN NO.	P	G	F	W	h4	d4
	MM	MM	MM	MM	MM	MM
GS38K1	38.0	32.0	53.0	83.2	20.0	8.5

RAK

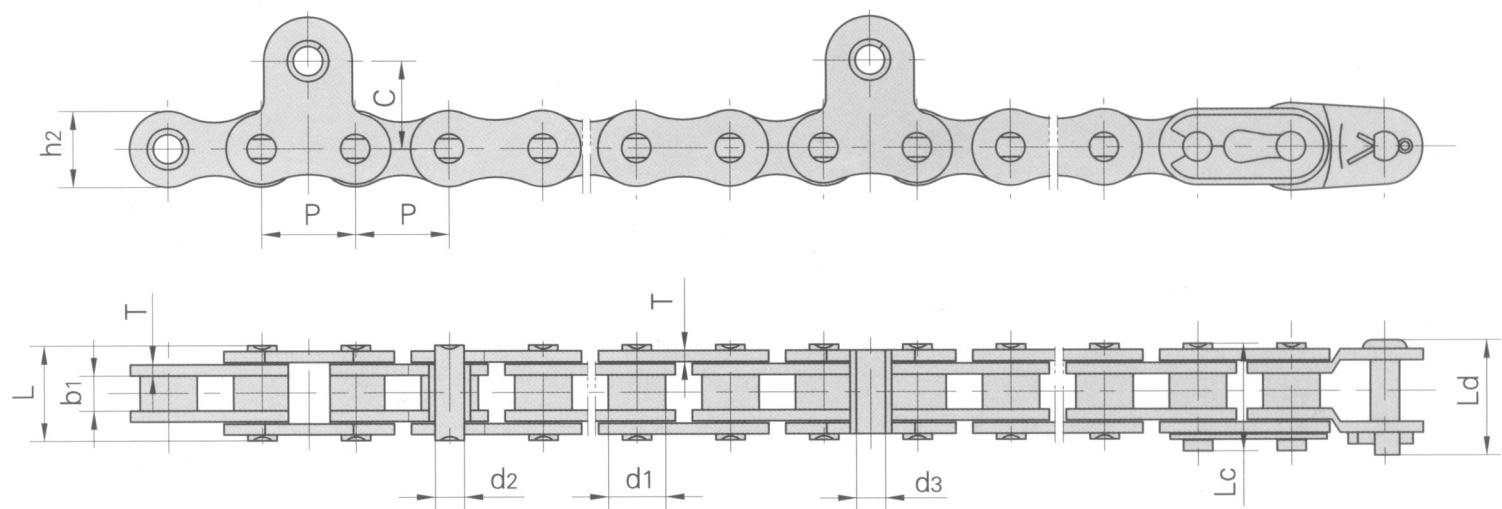
### Tractor Chains



RAK CHAIN NO.	PITCH	ROLLER DIAMETER	WIDTH BETWEEN INNER PLATES	PIN DIAMETER	PIN LENGTH		INNER PLATE DEPTH	PLATE THICKNESS	TRANSVERSE PITCH	AVERAGE TENSILE STRENGTH	WEIGHT PER METER
	P	d1 MAX	b1 MIN	d2 MAX	L MAX	Lc MAX	h2 MAX	T	Pt		
	MM	MM	MM	MM	MM	MM	MM	MM	MM	LB	KG/M
08B2	12.70	8.51	7.75	4.45	31.20	32.20	11.80	1.60	13.92	7540	1.34
012A2	19.05	11.91	12.57	5.94	48.80	50.50	18.00	2.42	22.78	14970	2.92
012A2H	19.05	11.91	12.57	5.94	55.30	57.10	18.00	3.25	26.11	14970	3.71

- We are manufacturers of engineering and special chains, for every type of industry.

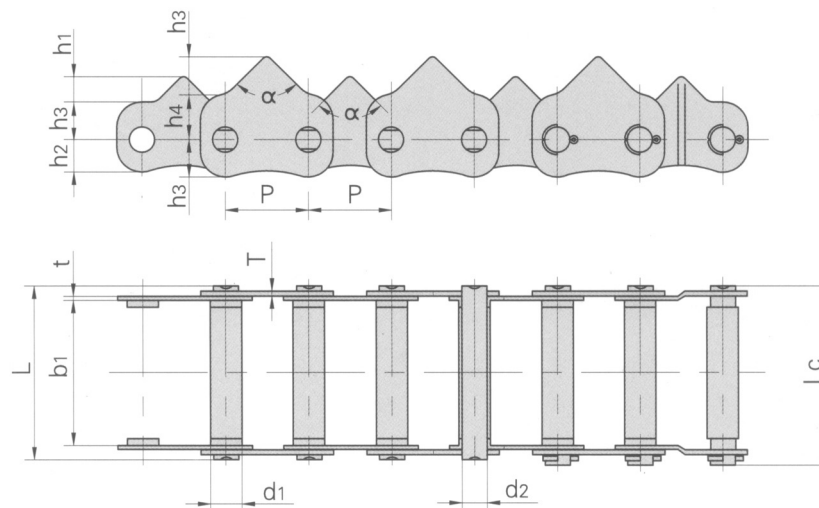
- In the chain market, our products are of the highest quality, and are manufactured under the international standards ANSI B29.1 M-2002 (DIN 3183) and ISO 606.



RAK CHAIN NO.	PITCH	ROLLER DIAMETER	WIDTH BETWEEN INNER PLATES	PIN DIAMETER	PIN LENGTH			INNER PLATE DEPTH	PLATE THICKNESS	ATTACHMENT DIMENSIONS		AVERAGE TENSILE STRENGTH
	P	d1 MAX	b1 MIN	d2 MAX	L MAX	Lc MAX	Ld MAX	h2 MAX	T MAX	d3	C	LB
	MM	MM	MM	MM	MM	MM	MM	MM	MM	MM	MM	
415F1	12.70	7.77	4.90	3.64	11.00	12.10	12.95	9.50	1.1	4.02	12.00	1832
415F2	12.70	7.77	4.90	3.64	11.00	12.10	12.95	9.50	1.1	4.02	12.00	1832
415F3	12.70	7.77	4.90	3.64	11.00	12.10	12.95	9.50	1.1	4.02	12.00	1832
415F4	12.70	7.77	4.68	3.62	11.8			9.6	1.3	4.0	12.00	2789
415F5	12.70	7.77	4.68	3.63	11.8	13.00	14.00	9.6	1.3	4.0	12.00	2789
415S	12.70	7.77	4.80	3.96	12.80	14.30	15.70	12.00	1.5	4.02	12.00	3920
415SA	12.70	7.77	4.90	3.96	12.80	14.30	15.70	12.00	1.5	4.02	12.00	3460
415SF1	12.70	7.77	4.80	3.96	13.00	14.50		10.40	1.5	4.50	12.00	3460
415SF2	12.70	7.77	4.80	3.96	13.00	14.50		10.40	1.5	4.50	12.00	3460
415SF3	12.70	7.77	4.80	3.96	12.80	14.30	15.70	12.00	1.5	4.02	12.00	3920
415SF4	12.70	7.77	4.80	3.96	13.00	14.50	15.70	12.00	1.5	4.00	12.00	3460
420JF1	12.70	7.77	6.25	3.96	14.70	16.10	18.50	12.00	1.5	4.00	12.00	4120



### Rice Harvester Chains



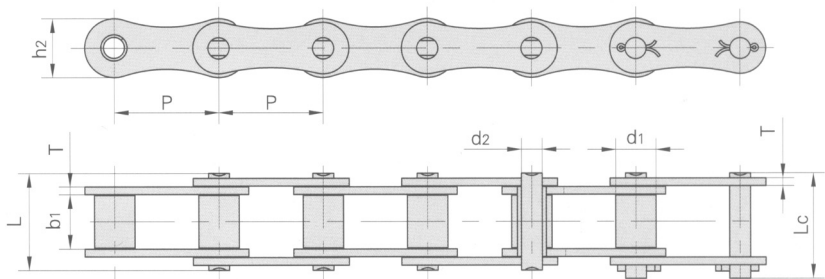
RAK CHAIN NO.	PITCH	ROLLER DIAMETER	WIDTH BETWEEN INNER PLATES	PIN DIAMETER	PIN LENGTH		PLATE DIMENSIONS				PLATE THICKNESS	TOOTH ANGLE	AVERAGE TENSILE STRENGTH
	P	d1 MAX	b1 MIN	d2 MAX	L MAX	LC MAX	h1	h2	h3	h4	T MAX	$\alpha$	
	MM	MM	MM	MM	MM	MM	MM	MM	MM	MM	MM		LB
4800	35.00	10.10	58.00	7.00	69.40	72.0	10.00	13.00	15.00	18.00	2.03	90°	4740
4800F1	35.00	12.60	58.00	7.00	69.40	71.2	10.00	13.00	15.00	18.00	2.03	90°	4740

- We are manufacturers of engineering and special chains, for every type of industry.

- In the chain market, our products are of the highest quality, and are manufactured under the international standards ANSI B29.1 M-2002 (DIN 3183) and ISO 606.

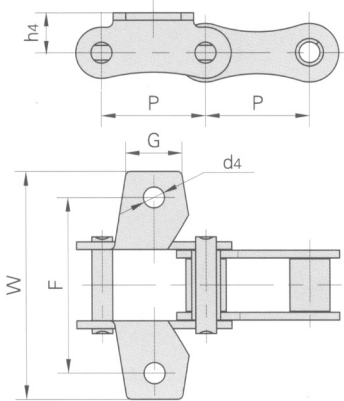
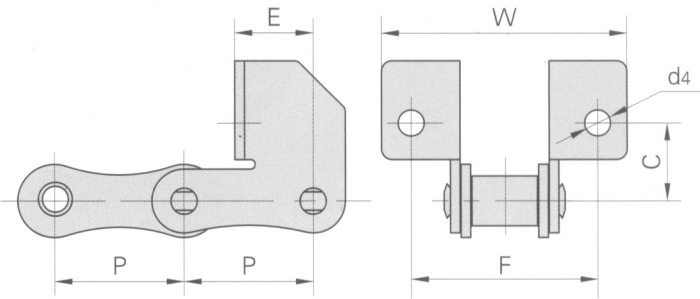


Special Agricultural Chains With Attachments



RAK CHAIN NO.	PITCH	ROLLER DIAMETER	WIDTH BETWEEN INNER PLATES	PIN DIAMETER	PIN LENGTH		PLATE DEPTH	PLATE THICKNESS	AVERAGE TENSILE STRENGTH
	P	d1 MAX	b1 MIN	d2 MAX	L MAX	Lc MAX	h2 MAX	T	
	MM	MM	MM	MM	MM	MM	MM	MM	LB
JA912	41.30	16.00	21.40	8.28	39.00	42.00	23.50	3.1	11980

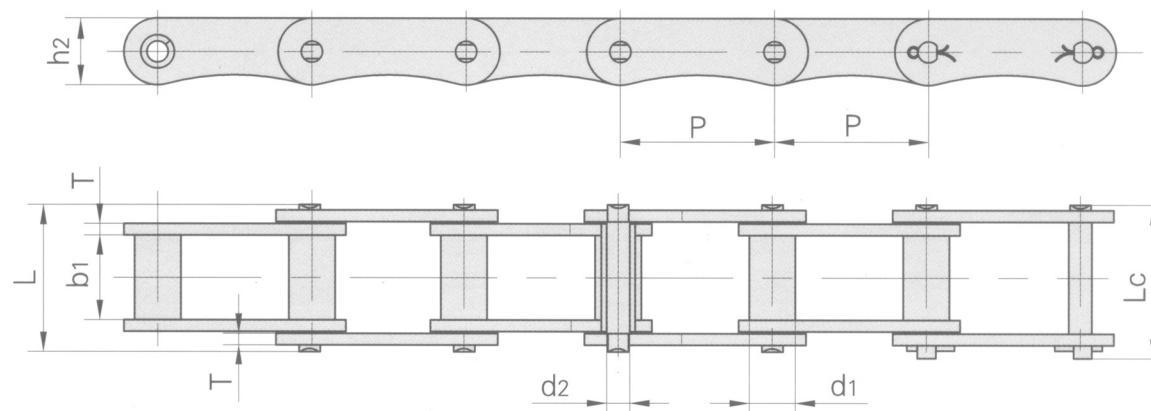
RAK CHAIN NO.	P	C	E	F	W	d4
	MM	MM	MM	MM	MM	MM
JA912D	41.30	25.00	25.00	60.00	79.00	6.40



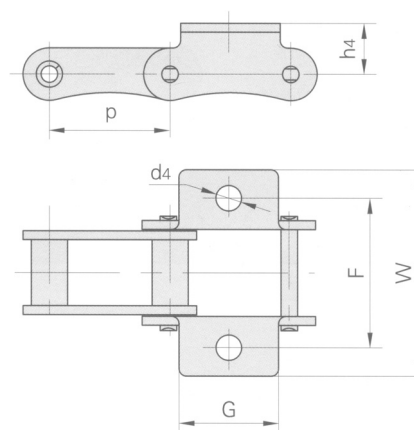
RAK CHAIN NO.	P	G	F	W	h4	d4
	MM	MM	MM	MM	MM	MM
JA91K1	41.30	22.00	70.50	91.30	16.00	8.40



### Special Agricultural Chain With Attachments



RAK CHAIN NO.	PITCH	ROLLER DIAMETER	WIDTH BETWEEN INNER PLATES	PIN DIAMETER	PIN LENGTH		PLATE DEPTH	PLATE THICKNESS	AVERAGE TENSILE STRENGTH	WEIGHT PER METER
	P	d1 MAX	b1 MIN	d2 MAX	L MAX	Lc MAX	h2 MAX	T MAX	LB	KG/M
	MM	MM	MM	MM	MM	MM	MM	MM		
M27	40	12	22	6	38.2	41	17.5	3	7623	2.27



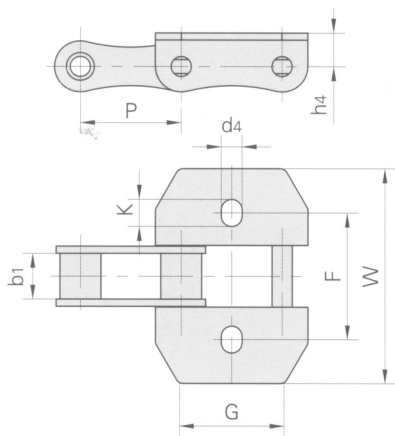
RAK CHAIN NO.	P	G	F	W	h4	d4
	MM	MM	MM	MM	MM	MM
M27K1	40	33	50	69	17	8.5

- We are manufacturers of engineering and special chains, for every type of industry.

- In the chain market, our products are of the highest quality, and are manufactured under the international standards ANSI B29.1 M-2002 (DIN 3183) and ISO 606.

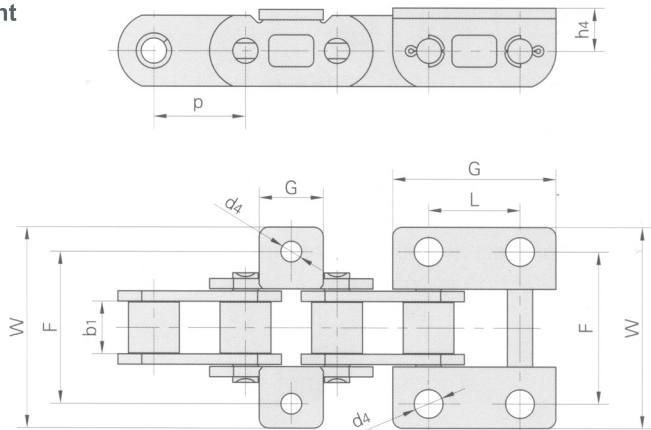
Special Agricultural Chains With Attachments

S1 - Attachment



RAK CHAIN NO.	P	b1	G	F	W	h4	d4	K
	MM	MM	MM	MM	MM	MM	MM	MM
CA642S103	41.10	19.00	40.00	53.00	89.60	8.40	8.5	11.25

S2 - Attachment



RAK CHAIN NO.	P	b1	L	G	F	W	h4	d4
	MM	MM	MM	MM	MM	MM	MM	MM
CA44151S1	28.575	16.20		20.00	47.00	61.00	13.00	6.5
CA44151S2	28.575	16.20	28.58	51.00	47.00	62.40	13.50	9.0