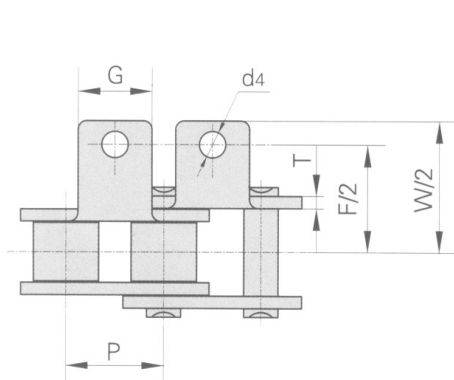
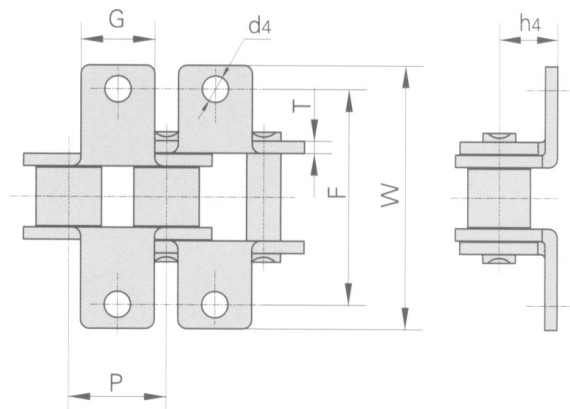


Roller Chains with Attachments



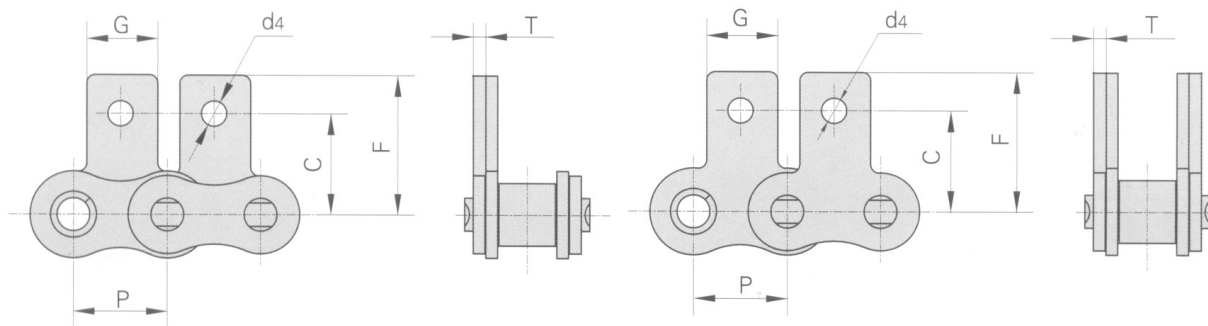
A-1



K-1

RAK CHAIN NO.	P	G	F	W	T	h4	d4
	MM	MM	MM	MM	MM	MM	MM
35	9.525	7.9	19.00	28.60	1.30	6.35	3.4
40	12.700	9.5	25.40	35.20	1.50	7.90	3.4
41	12.700	9.5	24.00	33.40	1.30	6.90	3.6
50	15.875	12.7	31.75	46.20	2.03	10.30	5.5
60	19.050	15.9	38.10	55.60	2.42	11.90	5.5
80	25.400	19.1	50.80	64.80	3.25	15.90	6.8
100	31.750	25.4	63.50	87.30	4.00	19.80	9.2
120	38.100	28.6	76.20	108.50	4.80	23.00	9.8
140	44.450	34.9	88.90	123.00	5.60	28.60	11.4
160	50.800	38.1	101.60	142.80	6.40	31.75	13.1
200	63.500	50.8	127.00	179.00	8.00	42.88	16.3

Roller Chains with Attachments



SA-1/M1 one side

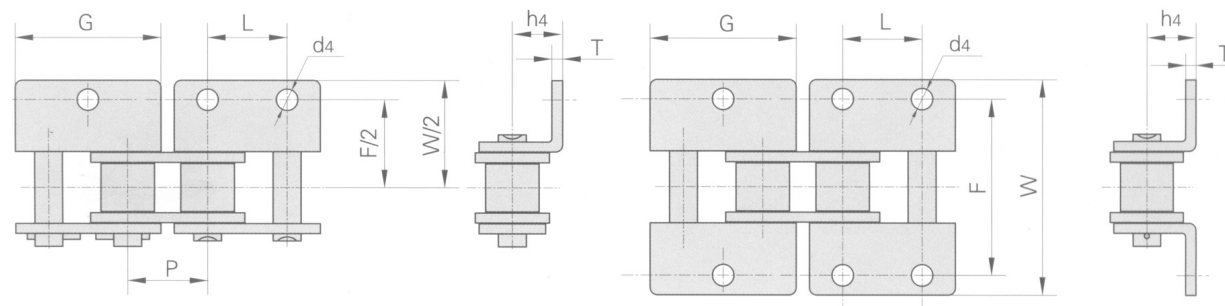
SK-1/M1 both sides

RAK CHAIN NO.	P	G	C	F	T	d4
	MM	MM	MM	MM	MM	MM
35	9.525	7.9	9.50	14.55	1.30	3.4
40	12.700	9.5	12.70	19.05	1.50	3.4
41	12.700	9.5	11.85	16.55	1.30	3.6
50	15.875	12.7	15.90	25.25	2.03	5.5
60	19.050	15.9	18.30	29.33	2.42	5.5
80	25.400	19.1	24.60	34.70	3.25	6.8
100	31.750	25.4	31.80	43.30	4.00	9.2
120	38.100	28.6	36.50	51.60	4.80	9.8
140	44.450	34.9	44.50	62.00	5.60	11.4
160	50.800	38.1	50.80	69.85	6.40	13.1
200	63.500	50.8	63.50	88.90	8.00	16.3

- We are manufacturers of engineering and special chains, for every type of industry.

- In the chain market, our products are of the highest quality, and are manufactured under the international standards ANSI B29.1 M-2002 (DIN 3183) and ISO 606.

Roller Chains with Attachments



WA-1

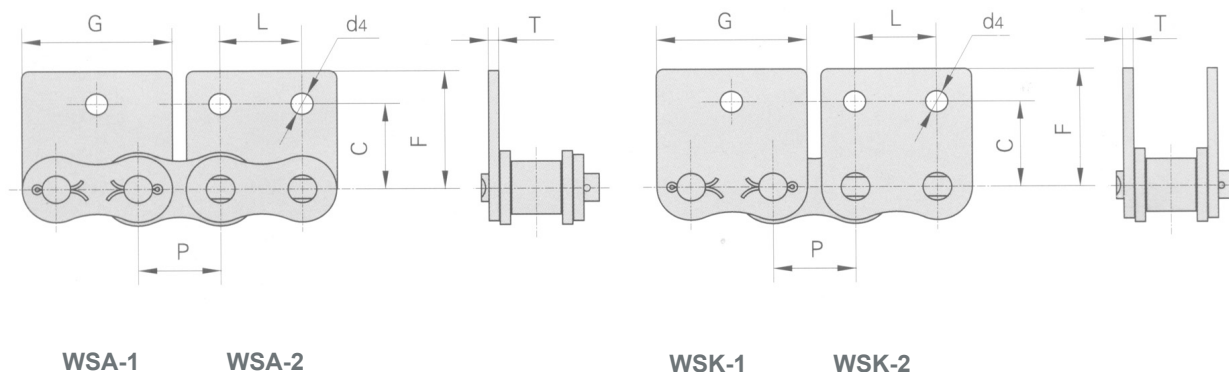
WA-2

WK-1

WK-2

RAK CHAIN NO.	P	G	L	F	W	T	h4	d4
	MM	MM	MM	MM	MM	MM	MM	MM
35	9.525	17.32	9.525	19.00	28.6	1.30	6.35	2.8
40	12.700	23.00	12.700	25.40	35.6	1.50	7.90	3.4
41	12.700	22.30	12.700	24.00	35.0	1.30	7.20	4.85
50	15.875	28.80	15.875	31.75	46.8	2.03	10.30	5.5
60	19.050	34.65	19.050	38.10	56.4	2.42	11.90	5.5
80	25.400	45.90	25.400	50.80	73.2	3.25	15.90	6.8
100	31.750	57.65	31.750	63.50	89.8	4.00	19.80	9.2
120	38.100	69.30	38.100	76.20	108.8	4.80	23.00	9.8
140	44.450	80.45	44.450	88.90	123.0	5.60	28.60	11.4
160	50.800	92.00	50.800	101.60	142.8	6.40	31.75	13.1
200	63.500	115.50	63.500	127.00	179.0	8.00	42.88	16.3

Roller Chains with Attachments

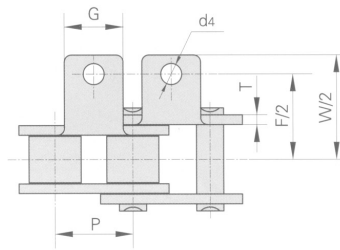


RAK CHAIN NO.	P	G	L	C	F	T	d4
	MM	MM	MM	MM	MM	MM	MM
35	9.525	17.32	9.525	9.50	14.55	1.30	2.8
40	12.700	23.00	12.700	12.70	17.40	1.50	3.4
41	12.700	22.30	12.700	11.85	16.55	1.30	3.6
50	15.875	28.80	15.875	15.90	23.05	2.03	5.5
60	19.050	34.65	19.050	18.30	26.86	2.42	5.5
80	25.400	45.90	25.400	24.60	35.45	3.25	6.8
100	31.750	57.65	31.750	31.80	44.00	4.00	9.2
120	38.100	69.30	38.100	36.50	51.60	4.80	9.8
140	44.450	80.45	44.450	44.50	62.00	5.60	11.4
160	50.800	92.00	50.800	50.80	69.85	6.40	13.1
200	63.500	115.50	63.500	63.50	88.90	8.00	16.3

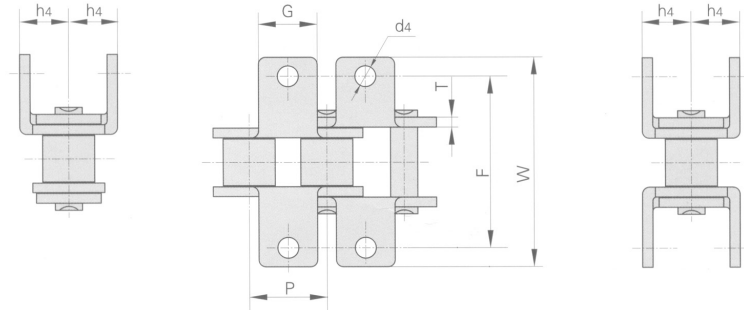
- We are manufacturers of engineering and special chains, for every type of industry.

- In the chain market, our products are of the highest quality, and are manufactured under the international standards ANSI B29.1 M-2002 (DIN 3183) and ISO 606.

Roller Chains with Attachments



AA-1

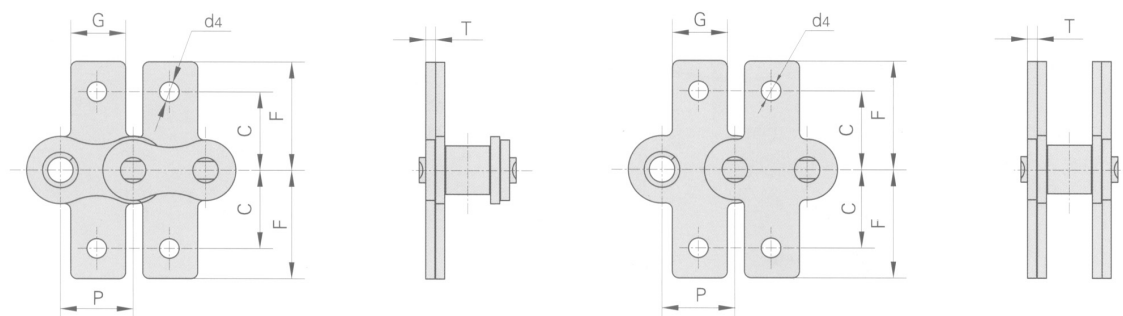


KK-1

RAK CHAIN NO.	P	G	F	W	T	h4	d4
	MM	MM	MM	MM	MM	MM	MM
40	12.700	9.5	25.40	35.2	1.50	7.90	3.4
50	15.875	12.7	31.75	46.2	2.03	10.30	5.5
60	19.050	15.9	38.10	55.6	2.42	11.90	5.5
80	25.400	19.1	50.80	64.8	3.25	15.90	6.8
100	31.750	25.4	63.50	87.3	4.00	19.80	9.2

RAK

Roller Chains with Attachments



SAA-1

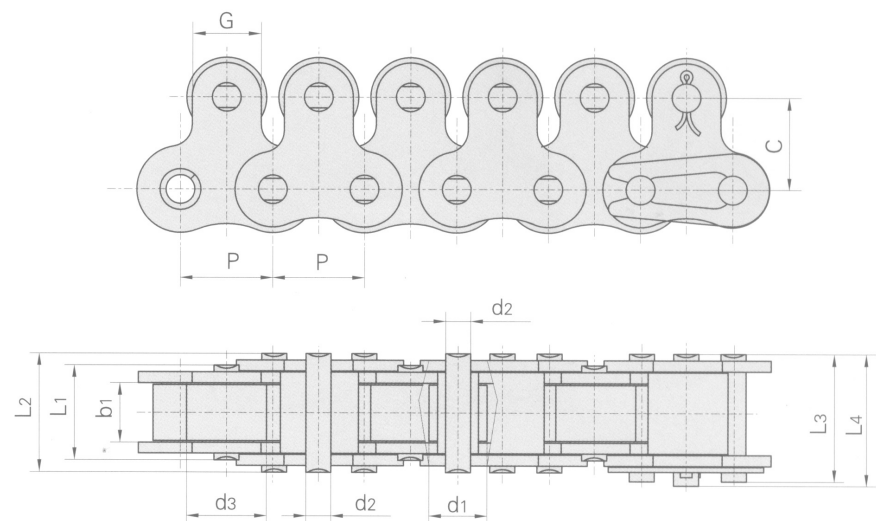
SKK-1

RAK CHAIN NO.	P	G	C	F	T	d4
	MM	MM	MM	MM	MM	MM
40	12.700	9.5	12.70	19.05	1.50	3.4
50	15.875	12.7	15.90	25.25	2.03	5.5
60	19.050	15.9	18.30	29.33	2.42	5.5
80	25.400	19.1	24.60	34.70	3.25	6.8
100	31.750	25.4	31.80	43.30	4.00	9.2

- We are manufacturers of engineering and special chains, for every type of industry.

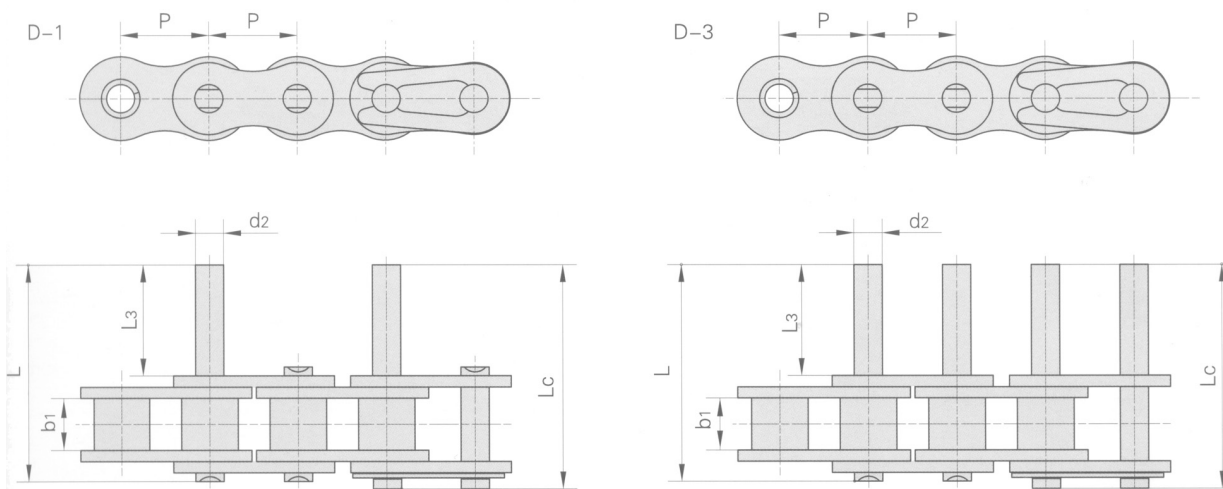
- In the chain market, our products are of the highest quality, and are manufactured under the international standards ANSI B29.1 M-2002 (DIN 3183) and ISO 606.

Roller Chains with Attachments



RAK CHAIN NO.	PITCH	ROLLER DIAMETER		WIDTH BETWEEN INNER PLATES	PIN DIAMETER	PIN LENGTH				PLATE DIMENSION		AVERAGE TENSILE STRENGTH	WEIGHT PER METER
	P	d1 max	d2 max	b1 min	d2	L1 max	L2 max	L3 max	L4 max	G	C		
	MM	MM	MM	MM	MM	MM	MM	MM	MM	MM	MM	LB	KG/M
40-1	12.700	7.95	11.0	7.85	3.96	13.5	16.6	17.8	18.8	9.5	12.7	4350	1.44
50-1	15.875	10.16	15.0	9.40	5.08	16.5	20.7	22.2	23.3	12.7	15.9	7100	2.30
60-1	19.050	11.91	18.0	12.57	5.94	21.0	25.9	27.7	28.3	15.9	18.3	9930	3.40
80-1	25.400	15.88	24.0	15.75	7.92	26.2	32.7	35.0	36.5	19.1	24.6	21520	5.90
100-1	31.750	19.05	30.0	18.90	9.53	32.3	40.4	44.7	44.7	25.4	31.8	33050	8.90

Roller Chains with Extended Pins

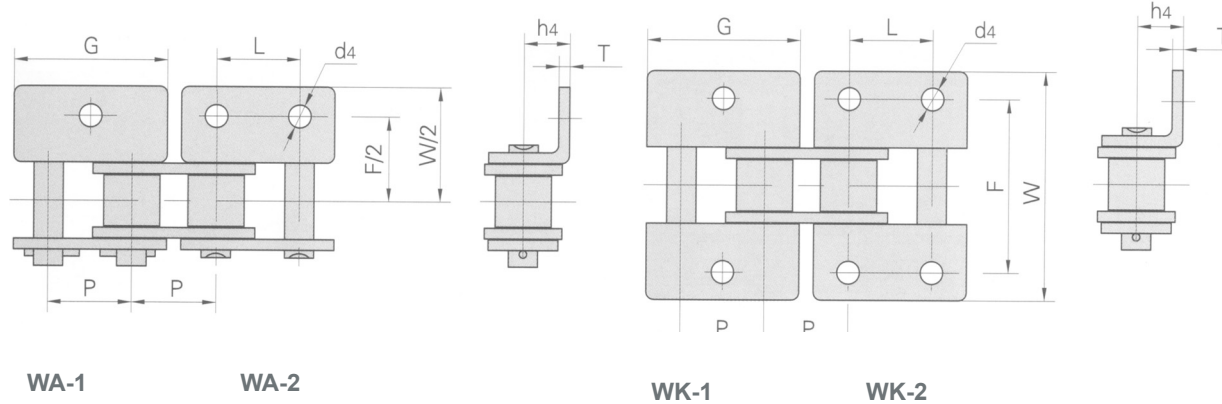


RAK CHAIN NO.	P	b1	d2	L3	L	Lc
	MM	MM	MM	MM	MM	MM
35	9.525	4.77	3.58	9.5	20.8	21.6
40	12.700	7.85	3.96	9.5	25.1	26.2
50	15.875	9.40	5.08	11.9	31.3	33.1
60	19.050	12.57	5.94	14.3	38.6	40.6
80	25.400	15.75	7.92	19.1	50.3	53.3
100	31.750	18.90	9.53	23.8	61.8	66.1
120	38.100	25.22	11.10	28.6	76.4	80.4
140	44.450	25.22	12.70	33.3	84.8	89.4
160	50.800	31.55	12.47	38.1	99.6	104.4

- We are manufacturers of engineering and special chains, for every type of industry.

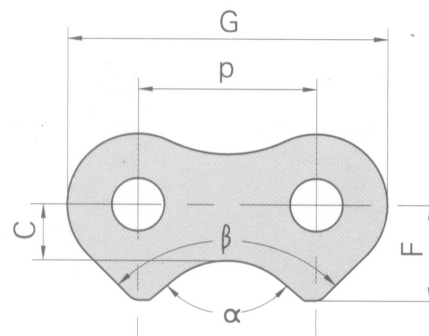
- In the chain market, our products are of the highest quality, and are manufactured under the international standards ANSI B29.1 M-2002 (DIN 3183) and ISO 606.

Stainless Steel Roller Chains with Attachments

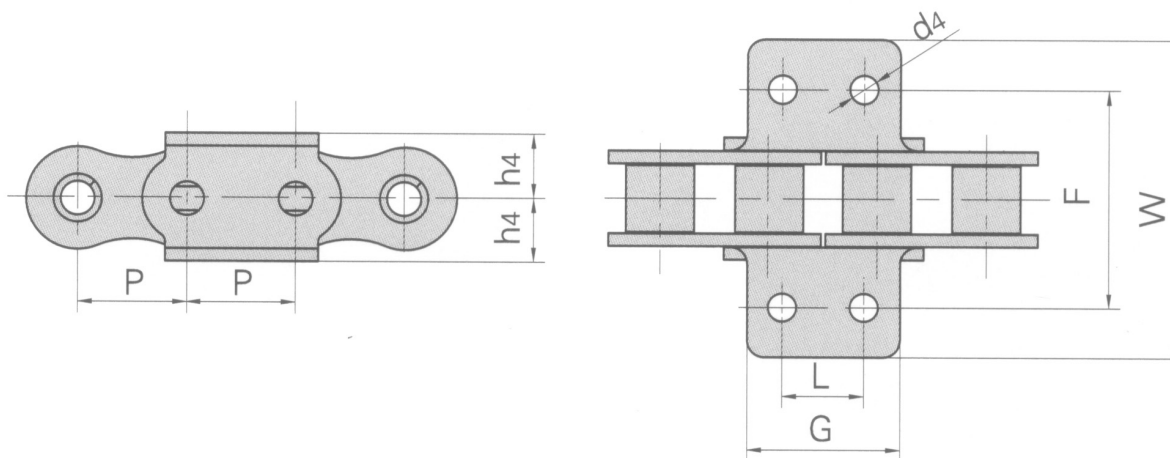


RAK CHAIN NO.	P	G	L	F	W	T	h4	d4
	MM	MM	MM	MM	MM	MM	MM	MM
40SS	12.700	23.00	12.700	25.4	35.60	1.50	7.90	3.4
50SS	15.875	28.80	15.875	31.8	46.80	2.03	10.30	5.5
60SS	19.050	34.65	19.050	38.1	56.40	2.42	11.90	5.5
80SS	25.400	45.90	25.400	50.8	73.20	3.25	15.90	6.8
100SS	31.750	57.65	31.750	63.5	89.80	4.00	19.80	9.2

Side Bow Chains with Attachment



RAK CHAIN NO.	P	G	C	F	α	β
	MM	MM	MM	MM		
50SBF2	15.875	28.0	5.0	8.56	100°	90°

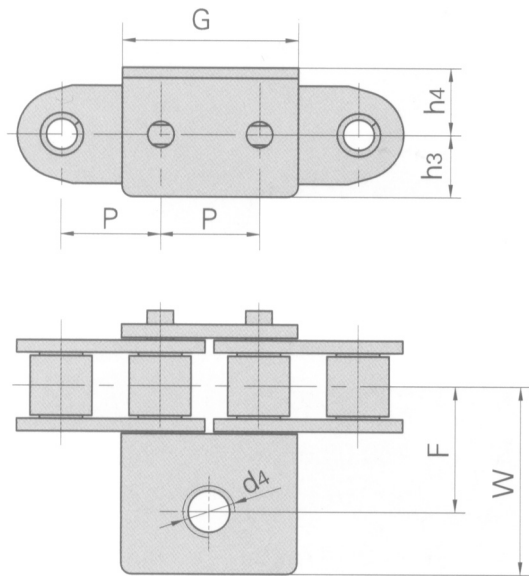


RAK CHAIN NO.	P	G	L	F	h4	d4
	MM	MM	MM	MM	MM	MM
40SBF1	12.7	17.8	9.5	30.2	7.5	3.3

- We are manufacturers of engineering and special chains, for every type of industry.

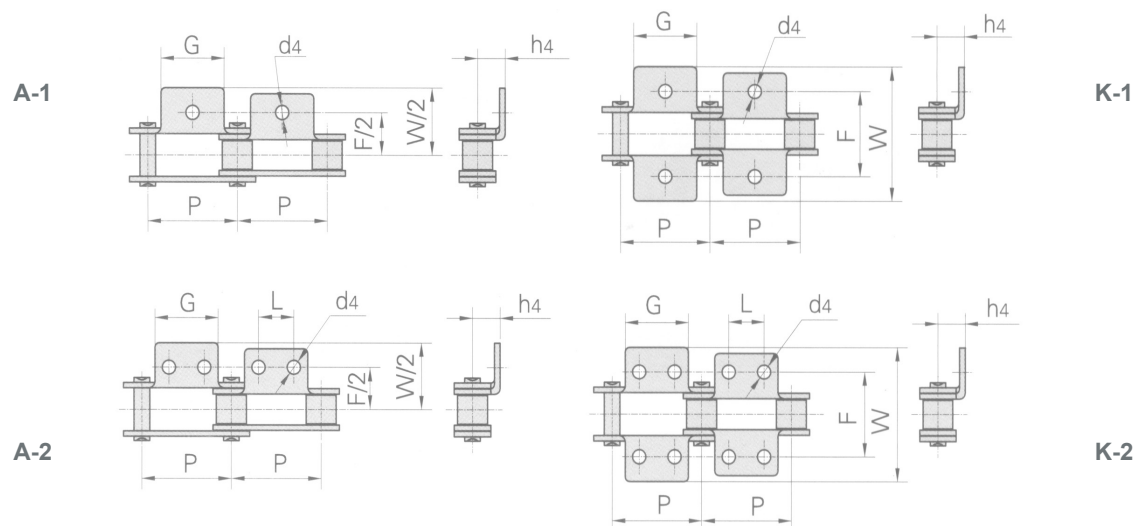
- In the chain market, our products are of the highest quality, and are manufactured under the international standards ANSI B29.1 M-2002 (DIN 3183) and ISO 606.

Side Bow Chains with Attachment



RAK CHAIN NO.	P	G	F	W	h3	h4	d4
	MM	MM	MM		MM	MM	MM
63SBF2	19.05	33.9	24.4	36.4	12	13.3	8

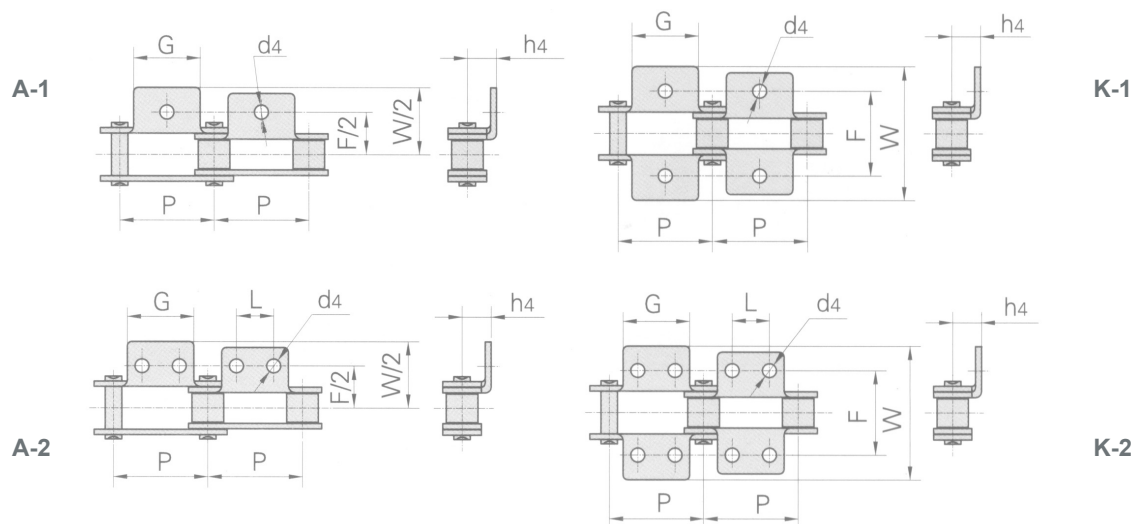
Double Pitch Conveyor Chain With Attachments



RAK CHAIN NO.	P	G	L	F	W	h4	d4
	MM	MM	MM	MM	MM	MM	MM
C208AF1	25.40	19.0		25.7	38.3	8.8	4.1
C2042F1	25.40	19.0		25.4	40.0	9.0	5.2
C2040A1F3	25.40	19.0		25.4	38.2	19.8	5.3
C2042A1F4	25.40	19.0		25.4	39.6	9.1	5.0
C2040A2F1	25.40	19.0	9.00	25.4	38.4	9.0	5.2
C2042HK1F1	25.40	19.0		47.0	60.0	9.1	7.0
C2050A1F6	31.75	23.8		31.8	49.0	11.4	6.3
C2052A2F1	31.75	19.0	11.90	31.8	49.0	11.1	6.0
C2052A2F2	31.75	19.0	15.88	31.8	49.0	11.1	5.5
C2052A2F3	31.75	25.8	12.70	31.8	49.2	11.1	4.8
C2060K1F1	38.10	28.6		42.9	68.0	14.7	8.5
C2062HK1F5	38.10	28.6		42.9	67.8	14.7	7.9
C2062A1F13	38.10	30.0		70.2	98.0	14.7	8.5
C2062A2F6	38.10	28.6	14.30	42.9	67.8	14.7	6.0
C2062K2F7	38.10	28.6	14.30	42.9	67.8	14.7	6.5
C2060HF3A2	38.10	28.6	14.30	42.9	67.8	14.7	5.2
C2062HF15	38.10	28.6	14.30	42.9	67.8	14.7	M5

RAK

Double Pitch Conveyor Chain With Attachments

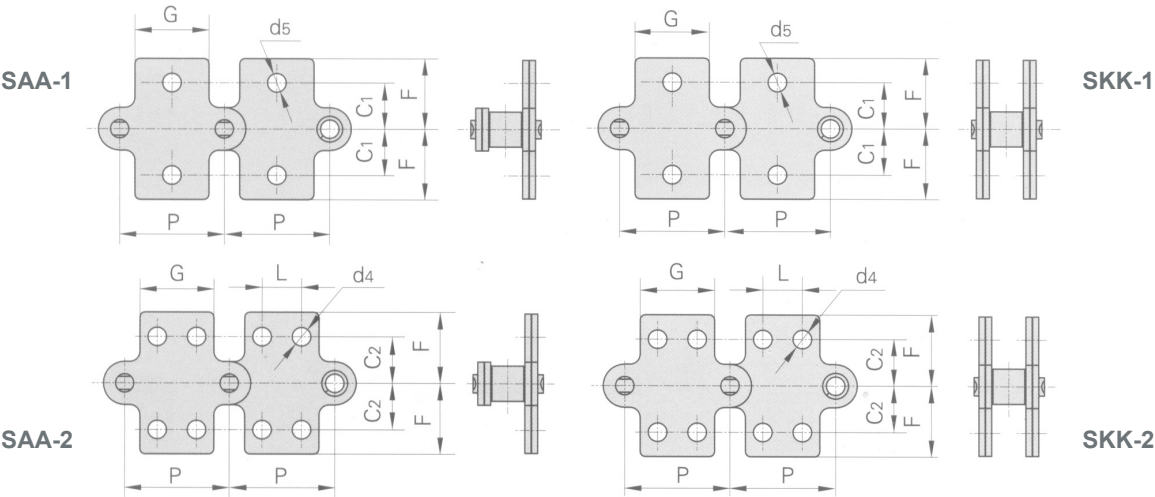


- We are manufacturers of engineering and special chains, for every type of industry.

- In the chain market, our products are of the highest quality, and are manufactured under the international standards ANSI B29.1 M-2002 (DIN 3183) and ISO 606.

RAK CHAIN NO.	P	G	L	F	W	h4	d4
	MM	MM	MM	MM	MM	MM	MM
C2060HK1F	38.10	28.6		42.9	67.8	14.7	8.0
C2062HA1F4	38.10	20.0		45.8	65.8	9.0	6.8
C2062HK1F5	38.10	28.6		42.9	67.8	14.7	7.9
C2062HA1F7	38.10	28.6		42.9	67.8	14.7	5.2
C2060HA1F12	38.10	28.0		43.4	61.8	13.9	6.6
C2060HK2F3	38.10	28.6	14.30	42.9	64.8	14.7	5.0
C2062HK2F4	38.10	28.6	14.30	42.9	56.4	14.7	5.2
C2062HK2F5	38.10	28.6	14.30	55.6	76.0	11.1	5.5
C216AF3	50.80	39.0	19.10	59.0	78.5	23.0	7.0
C2082A2F1	50.80	39.0	19.00	58.0	82.0	21.5	7.0
C2082A2F2	50.80	39.0	19.00	58.0	82.0	21.5	10.0
C2082K2F5	50.80	38.1	19.10	120.0	140.0	19.1	6.8
C2080HF	50.80	38.1	19.10	55.6	75.2	17.8	10.0
C2082HK1F5	50.80	38.1		55.6	79.6	19.1	8.0
C2082HA1F6	50.80	38.1		55.6	77.8	19.1	10.0

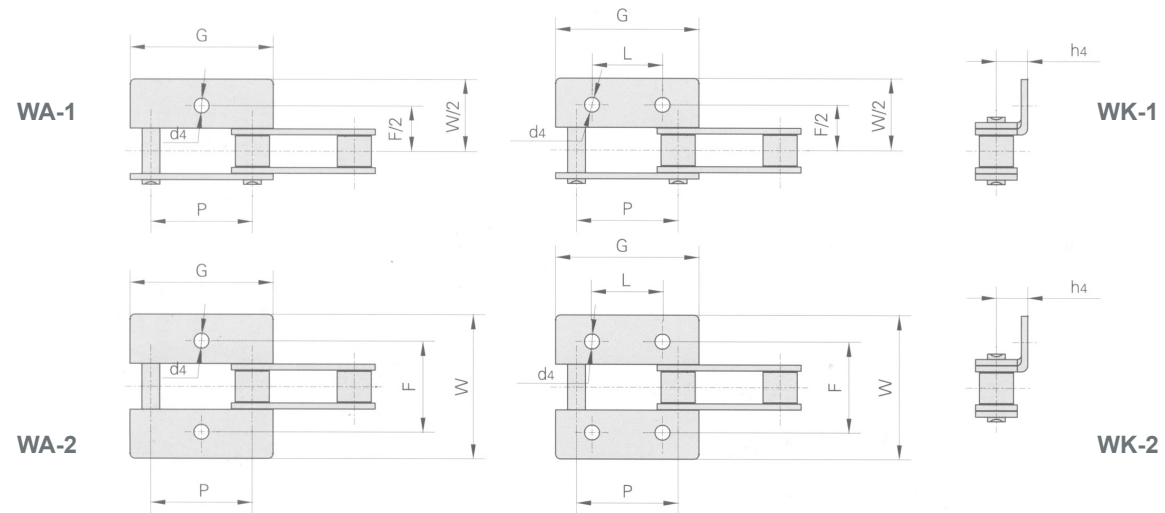
Double Pitch Conveyor Chain With Attachments



RAK CHAIN NO.	P	G	L	C1	C2	F	d4	d5
	MM	MM	MM	MM	MM	MM	MM	
C2040 C2042	25.40	19.1	9.5	11.1	13.5	20.5	3.4	5.5
C2050 C2052	31.75	23.8	11.9	14.3	15.9	25.0	5.5	6.6
C2060 C2062	38.10	28.6	14.3	17.5	19.1	32.9	5.5	9.2
C2060H C2062H	38.10	28.6	14.3	17.5	19.1	32.9	5.5	9.2
C2080 C2082	50.80	38.1	19.1	22.2	25.4	43.5	6.6	11.0
C2080H C2082H	50.80	38.1	19.1	22.2	25.4	43.5	6.6	11.0

RAK

Double Pitch Conveyor Chain With Attachments

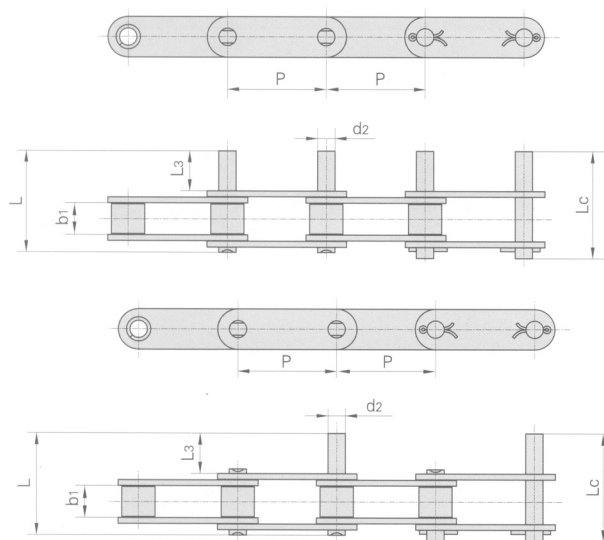


RAK CHAIN NO.	P	G	L	F	W	h4	d4
	MM	MM	MM	MM	MM	MM	MM
C2040K1F2	25.40	37.0	9.5	62.0	110.0	9.1	7.0
C2042HF1	25.40	37.4		42.5	65.5	6.0	7.0
C2052WA1F2	31.75	46.8		76.2	95.2	7.5	7.1
C2062WA2F1	38.10	56.1	38.1	42.9	67.8	14.7	6.5
C2062WK2F2	38.10	56.1	38.1	43.0	68.0	14.7	7.8
C2062HWA1F4	38.10	55.6	38.1	76.2	95.3	8.7	7.1
C216ALF5	50.80	74.8	44.3	62.2	88.0	19.1	7.0
C2082F12	50.80	74.8	50.8	55.6	88.0	19.1	8.4
C2082F24	50.80	74.8	56.8	55.6	87.8	19.1	6.8
C2082HF1A2	50.80	74.8	30.0	60.0	84.0	18.0	8.5

- We are manufacturers of engineering and special chains, for every type of industry.

- In the chain market, our products are of the highest quality, and are manufactured under the international standards ANSI B29.1 M-2002 (DIN 3183) and ISO 606.

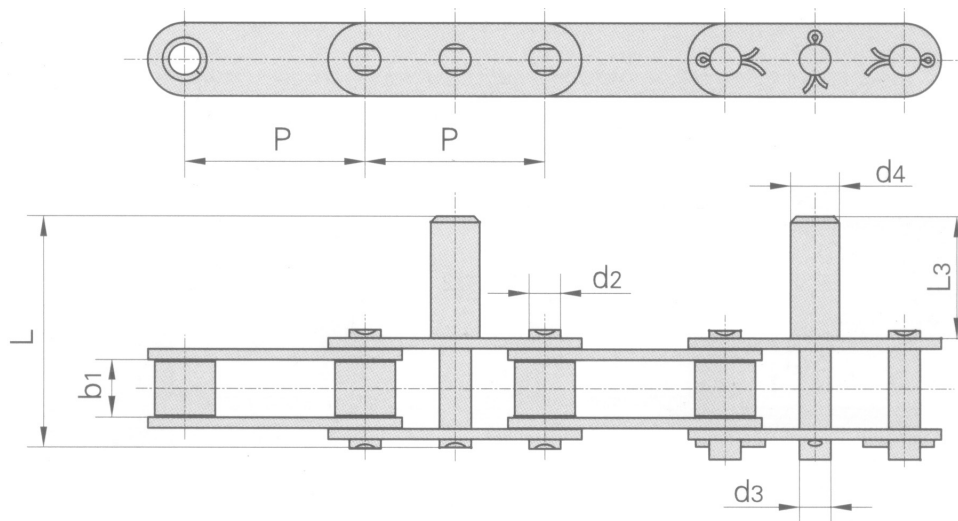
Double Pitch Conveyor Chain With Extended Pins



RAK CHAIN NO.	P	b1	d2	L3	L	Lc
	MM	MM	MM	MM	MM	MM
C2040 C2042	25.40	7.85	3.96	9.5	25.1	26.2
C2050 C2052	31.75	9.40	5.08	11.9	31.3	33.1
C2060 C2062	38.10	12.57	5.94	14.3	38.6	40.6
C2060H C2062H	38.10	12.57	5.94	14.3	42.0	43.8
C2080 C2082	50.80	15.75	7.92	19.1	50.3	53.3
C2080H C2082H	50.80	15.75	7.92	19.1	53.5	55.0
C2100 C2102	63.50	18.90	9.53	23.8	61.8	66.1
C2120H C2120H	63.50	18.90	9.53	23.8	65.0	68.3
C2120H C2122H	76.20	25.22	11.10	28.6	79.6	83.6
C2160H C2162H	101.6	31.75	14.27	38.1	103.0	107.8

RAK

Double Pitch Conveyor Chain With Extended Pins

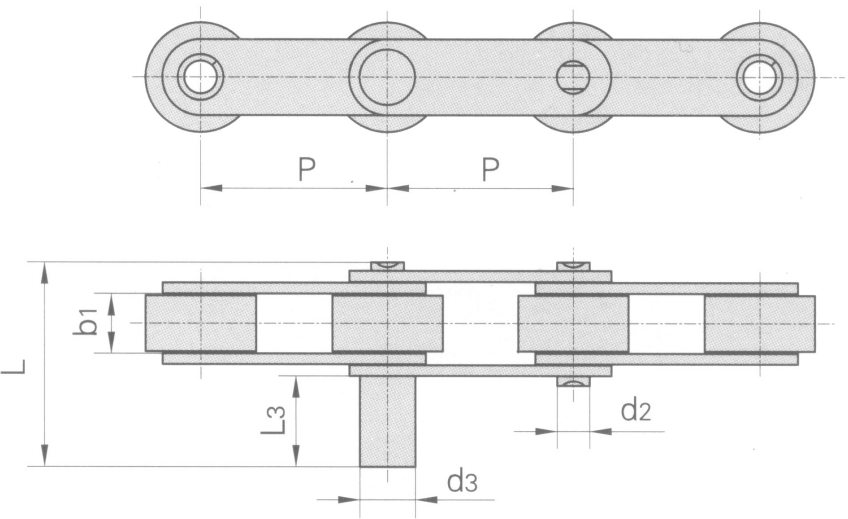


RAK CHAIN NO.	P	b1	d2	d3	d4	L3	L
	MM	MM	MM	MM	MM	MM	MM
C2052F2	31.75	9.40	5.08	6.00	7.0	20.0	39.8
C2052F14	31.75	9.40	5.08	6.00	7.0	21.0	40.4
C2062-D38	38.10	12.57	5.94	5.94	11.1	24.2	48.6
C2062-D39	38.10	12.57	5.94	5.94	13.3	32.2	56.6
C212AHL-D4	38.10	12.57	5.94	5.94	8.0	25.0	53.0
C212AHF3	38.10	12.57	5.94	8.08	10.0	35.0	63.0
C212AHF7	38.10	12.57	5.94	5.94	12.7	41.2	69.2
C212AHF8	38.10	12.57	5.94	8.00	10.0	35.0	63.8
C2060HF9	38.10	12.57	5.94	7.95	12.7	41.3	69.3
C2060HF10	38.10	12.57	5.94	7.70	14.3	41.3	69.3
C2060H-D23	38.10	12.57	5.94	8.80	12.7	41.3	69.3
C2060H-D24	38.10	12.57	5.94	7.95	12.7	44.8	65.6
C2060H-D31	38.10	12.57	5.94	7.95	16.0	45.0	73.0
C2062H-D41	38.10	12.57	5.94	9.53	9.5	22.2	50.0

- We are manufacturers of engineering and special chains, for every type of industry.

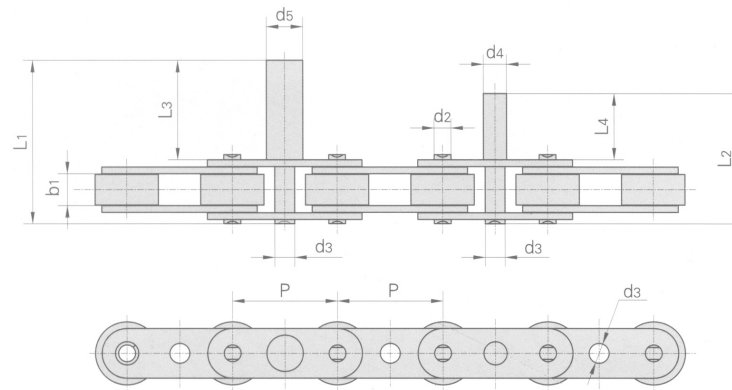
- In the chain market, our products are of the highest quality, and are manufactured under the international standards ANSI B29.1 M-2002 (DIN 3183) and ISO 606.

Double Pitch Conveyor Chain With Extended Pins

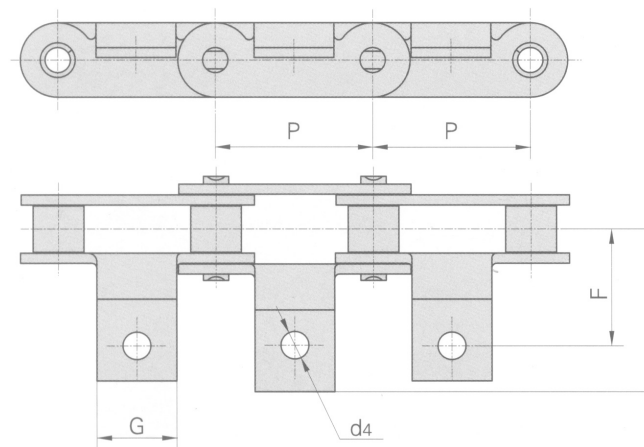


RAK CHAIN NO.	P	b1	d2	d3	L3	L
	MM	MM	MM	MM	MM	MM
C2052DF1	31.75	9.40	5.08	7.50	14.5	33.6
C210AF4	31.75	9.40	5.08	11.00	34.00	53.7
C2052-D4	31.75	9.40	5.08	6.00	32.40	52.0
C2050-D5	31.75	9.40	5.08	8.00	40.00	59.7
C212AHL-D4	38.10	12.57	5.94	8.00	25.00	53.0
C2062-D6	38.10	12.57	5.94	12.00	25.00	49.7

Double Pitch Conveyor Chain With Extended Pins



RAK CHAIN NO.	P	b1	d2	d4	d5	L3	L1	L4	L2
	MM	MM	MM	MM	MM	MM	MM	MM	MM
C2052F1	31.75	9.4	6.0	7.0	11.0	30.0	49.8	20.0	39.8



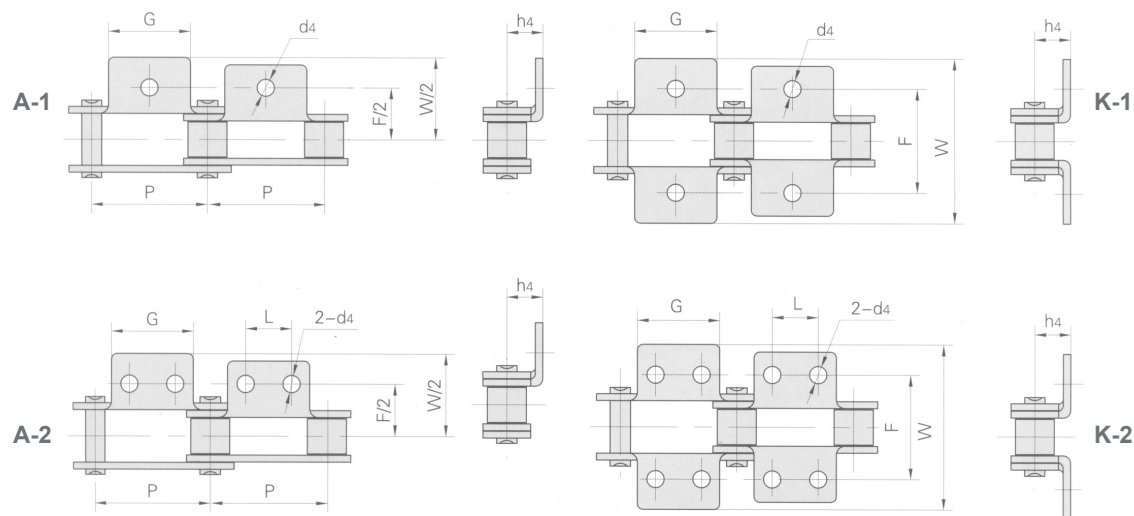
RAK CHAIN NO.	P	G	F	W	d4
	MM	MM	MM	MM	MM
C2050A6	31.75	16.0	23.4	32.8	5.5

- We are manufacturers of engineering and special chains, for every type of industry.

- In the chain market, our products are of the highest quality, and are manufactured under the international standards ANSI B29.1 M-2002 (DIN 3183) and ISO 606.

Conveyor Chains

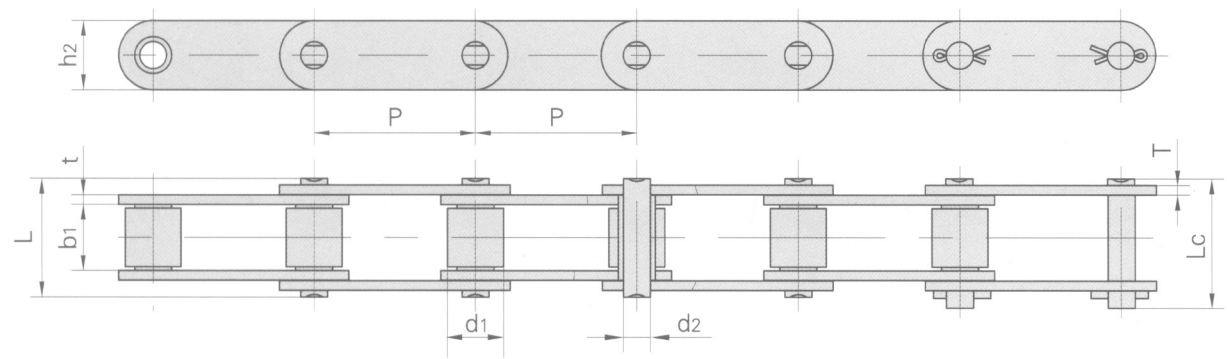
Double Pitch Stainless Steel Conveyor Chains With Attachments



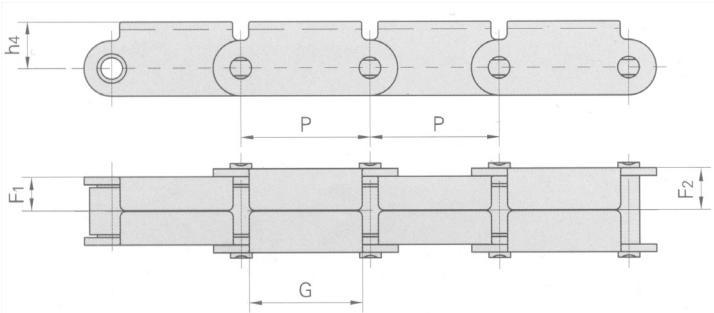
RAK CHAIN NO.	P	G	L	F	W	h4	d4
	MM	MM	MM	MM	MM	MM	MM
C2040SS C2042SS	25.4	19.1	9.5	25.4	39.6	9.1	3.4
C208BSS C208BLSS	25.4	23.2	12.7	25.4	39.6	9.1	4.5
C2050SS C2052SS	31.75	23.8	11.9	31.8	49.0	11.1	5.5
C2060SS C2062SS	38.1	28.6	14.3	42.9	67.8	14.7	5.5
C2060HSS C2062HSS	38.1	28.6	14.3	42.9	67.8	14.7	5.5
C2080SS C2082SS	50.8	38.1	19.1	55.6	87.8	19.1	6.8
C2080HSS C2082HSS	50.8	38.1	19.1	55.6	87.8	19.1	6.8
C2100SS C2102SS	63.5	47.6	23.8	66.6	107.5	23.4	9.2
C2100HSS C2102HSS	63.5	47.6	23.8	66.6	107.5	23.4	9.2

RAK

Lumber Conveyor Chains and Attachments



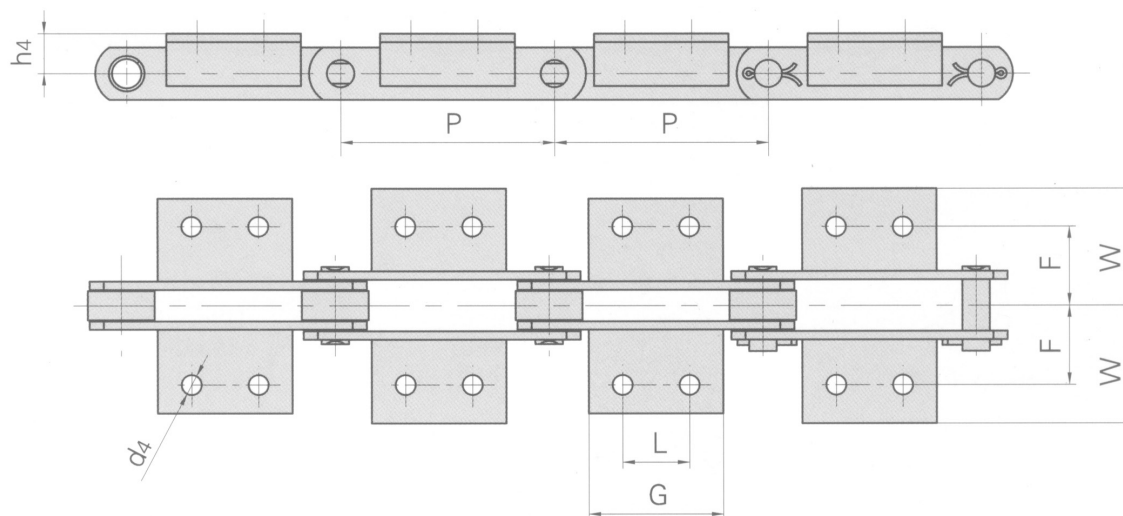
RAK CHAIN NO.	PITCH	ROLLER DIAMETER	WIDTH BETWEEN INNER PLATES	PIN DIAMETER	PIN LENGTH		INNER PLATE DEPTH	PLATE THICKNESS	AVERAGE TENSILE STRENGTH	WEIGHT PER METER
	P	d1 max	b1 min	d2 max	L max	Lc max	h2 max	t/T max		
	MM	MM	MM	MM	MM	MM	MM	MM	LB	KG/M
81X	66.27	23.00	27.00	11.10	49.0	53.5	28.50	4.00	24250	3.78
81XH	66.27	23.00	27.78	11.10	60.7	65.1	31.35	7.94/5.55	34523	5.88
81XH	66.27	23.00	27.78	11.10	65.6	70.0	31.35	7.94	43432	6.70
81XHS	66.27	23.00	27.00	11.10	63.6	68.0	31.80	7.60	34545	6.55
500R	50.00	25.40	25.40	14.63	52.0	56.4	40.00	5.00	22727	7.13



RAK CHAIN NO.	P	F1	F2	G	h4
	MM	MM	MM	MM	MM
81XF1(RT)	66.27	17.5	21.8	58.0	23.85

RAK

Conveyor Chains With Attachments-M Series



RAK CHAIN NO.	P	L	G	d4	F	W	h4
	MM	MM	MM	MM	MM	MM	MM
M20	40.0	attachments with 1 hole	14.0	6.6	27.0	40.0	16.0
	50.0	attachments with 1 hole	14.0				
	63.0	20.0	35.0				
	80.0	35.0	50.0				
M28	50.0	attachments with 1 hole	20.0	9.0	32.0	47.0	20.0
	63.0	attachments with 1 hole	20.0				
	80.0	25.0	45.0				
	100.0	40.0	60.0				
M40	63.0	attachments with 1 hole	31.0	9.0	35.0	50.0	25.0
	80.0	20.0	45.0				
	100.0	40.0	60.0				
	125.0	65.0	85.0				

- We are manufacturers of engineering and special chains, for every type of industry.

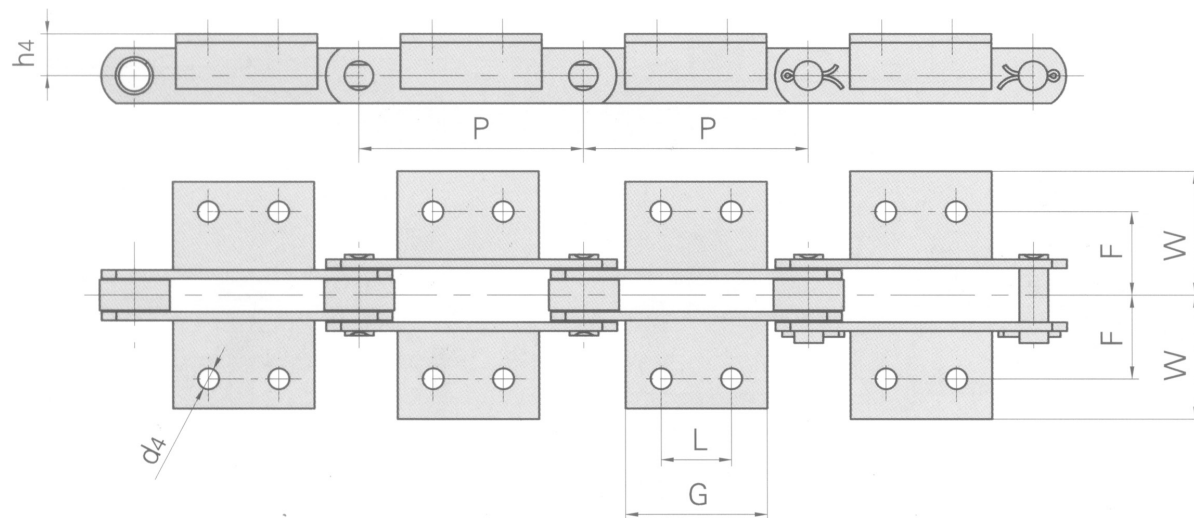
- In the chain market, our products are of the highest quality, and are manufactured under the international standards ANSI B29.1 M-2002 (DIN 3183) and ISO 606.

Conveyor Chains With Attachments-M Series

RAK CHAIN NO.	P	L	G	d4	F	W	h4
	MM	MM	MM	MM	MM	MM	MM
M56	63.0	attachments with 1 hole	22.0	11.0	44.0	61.0	30.0
	80.0	attachments with 1 hole	30.0				
	100.0	25.0	50.0				
	125.0	50.0	75.0				
	160.0	85.0	110.0				
M80	80.0	attachments with 1 hole	30.0	11.0	48.0	65.0	35.0
	100.0	25.0	50.0				
	125.0	50.0	75.0				
	160.0	85.0	110.0				
	200.0	125.0	150.0				



Conveyor Chains With Attachments-M Series



RAK CHAIN NO.	P	L	G	d4	F	W	h4
	MM	MM	MM	MM	MM	MM	MM
M112	80.0	attachments with 1 hole	28.0	14.0	55.0	80.0	40.0
	100.0	attachments with 1 hole	40.0				
	125.0	35.0	65.0				
	160.0	65.0	95.0				
	200.0	100.0	130.0				
M160	100.0	attachments with 1 hole	30.0	14.0	62.0	85.0	45.0
	125.0	25.0	50.0				
	160.0	50.0	80.0				
	200.0	85.0	115.0				
	250.0	145.0	175.0				

- We are manufacturers of engineering and special chains, for every type of industry.

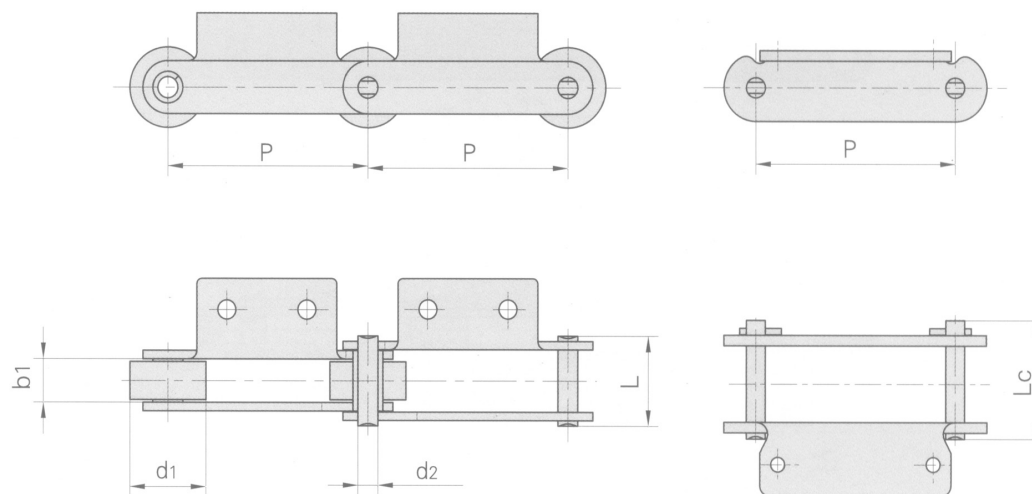
- In the chain market, our products are of the highest quality, and are manufactured under the international standards ANSI B29.1 M-2002 (DIN 3183) and ISO 606.

Conveyor Chains With Attachments-M Series

RAK CHAIN NO.	P	L	G	d4	F	W	h4
	MM	MM	MM	MM	MM	MM	MM
M224	125.0	attachments with 1 hole	35.0	18.0	70.0	110.0	55.0
	160.0	attachments with 1 hole	60.0				
	200.0	65.0	100.0				
	250.0	125.0	160.0				
	315.0	190.0	230.0				
M315	160.0	attachments with 1 hole	35.0	18.0	80.0	115.0	65.0
	200.0	50.0	85.0				
	250.0	100.0	140.0				
	315.0	155.0	190.0				
	400.0	155.0	205.0				



Conveyor Chains With Attachments-M Series



RAK CHAIN NO.	PITCH	ROLLER DIAMETER	WIDTH BETWEEN INNER PLATES	PIN DIAMETER	PIN LENGTH		AVERAGE TENSILE STRENGTH	WEIGHT PER METER
	P	d1 max	b1 min	d2 max	L max	Lc max		
	MM	MM	MM	MM	MM	MM	LB	KG/M
M18F1A1-P-50	50.00	25.00	11.50	5.72	26.0	28.2	4050	2.46
M18F2A1.02-P-50	50.00	25.00	11.50	5.72	28.0	30.2	4050	2.18
M18F4A1.02-S-50	50.00	15.00	12.00	6.00	24.0	26.5	4050	1.20
M28F1A2-P-80	80.00	29.40	18.00	7.00	35.4	38.7	6300	2.60
M28F3A2-P-63	63.00	30.00	17.00	7.00	37.3	40.3	7874	3.48
M28F3A2-F-100	100.00	30.00	17.00	7.00	37.3	40.3	7874	3.46
M32A1.02-P-50	50.00	31.00	15.00	10.00	33.0	35.5	7200	4.09
M32A1F1-P-50	50.00	31.00	15.00	10.00	33.0	35.5	7200	3.96
M35F4A1.01-C-69	69.00	25.00	12.00	7.00	27.5	30.0	7874	2.26
M40FA1.02-P-50	50.00	31.00	15.00	10.00	36.6	39.0	16872	4.52
M40FK2F1-P-50	50.00	31.00	15.00	10.00	36.6	39.0	9000	4.94
M40F10-F-76.2	76.20	31.50	15.00	14.00	38.0	42.0	9000	4.16

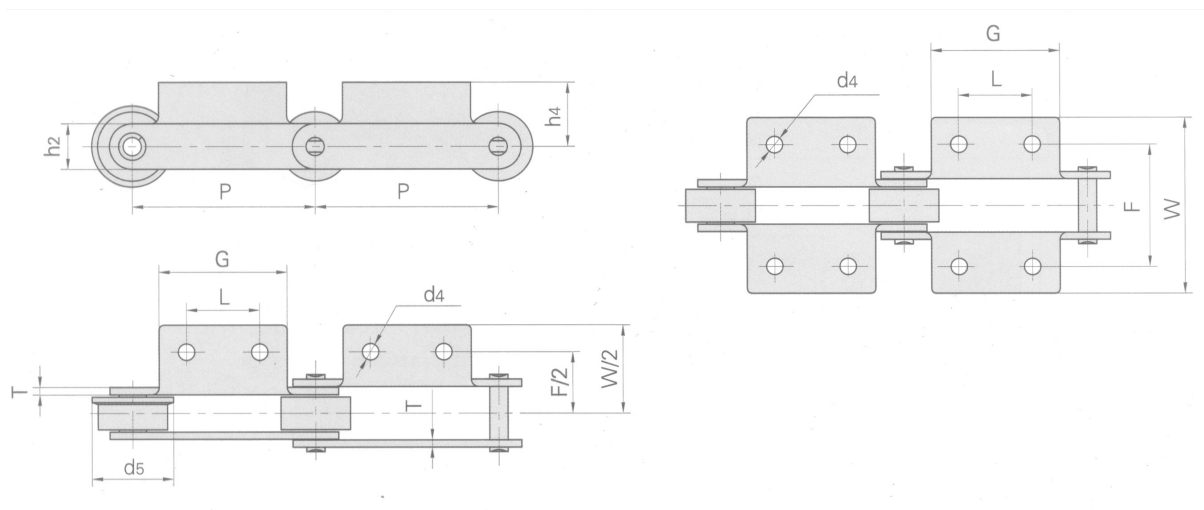
- We are manufacturers of engineering and special chains, for every type of industry.

- In the chain market, our products are of the highest quality, and are manufactured under the international standards ANSI B29.1 M-2002 (DIN 3183) and ISO 606.

RAK CHAIN NO.	PITCH	ROLLER DIAMETER	WIDTH BETWEEN INNER PLATES	PIN DIAMETER	PIN LENGTH		AVERAGE TENSILE STRENGTH	WEIGHT PER METER
	P	d1 max	b1 min	d2 max	L max	Lc max		
	MM	MM	MM	MM	MM	MM	LB	KG/M
M80K1F1-P-100	100.00	50.00	28.00	12.00	55.0	58.5	18000	9.10
M80K2F1-B-100	100.00	18.00	28.00	12.00	55.0	58.5	18000	5.94
M80F5K1-B-100	100.00	18.00	28.00	12.00	55.0	58.5	18000	5.45
M112K2F1-S-125	125.00	30.00	32.00	16.00	64.5	69.0	25200	7.35
M112F3-F-200	200.00	60.00	37.00	16.00	69.0	74.0	25200	11.00
M112F5K2-P-100	100.00	36.00	37.00	16.00	69.0	74.0	25200	8.28
M160F1K2-P-100	100.00	36.00	36.00	18.00	76.0	80.0	35993	10.80
M160F2-B-100	100.00	25.00	37.00	18.00	73.3	83.0	49940	11.36
M160F3K1-P-101.6	101.60	66.70	26.00	26.90	58.0	78.5	35093	17.37
M160F12K2-S-100	100.00	36.00	38.00	14.00	76.0		22496	9.33
M224F6A2-P-160	160.00	85.00	42.00	21.00	87.5	92.5	51982	27.56



Conveyor Chains With Attachments-M Series



RAK CHAIN NO.	P	L	G	F	W	h4	h2	d4	T	d5
	MM	MM	MM	MM	MM	MM	MM	MM	MM	MM
M18F1A1-P-50	50.00	attachments with 1 hole	46.0	44.0	72.0	24.0	18.0	6.5	2.50	
M18F2A1.02-P-50	50.00	attachments with 1 hole	41.0	48.0	68.0	25.0	15.0	6.5	3.00	
M18F4A1.02-S-50	50.00	attachments with 1 hole	30.0	50.0	83.0	20.0	15.0	8.0	2.03	
M28F1A2-P-80	80.00	25.00	45.8	66.0	91.6	11.8	20.5	8.8	3.25	
M28F3A2-P-63	63.00	20.00	50.0	64.0	92.0	20.0	20.0	9.0	4.00	
M28F3A2-F-100	100.00	40.00	76.0	64.0	100.0	20.0	20.0	9.0	4.00	40.0
M32A1.02-P-50	50.00	attachments with 1 hole	60.0	62.0	97.0	35.0	23.0	10.0	3.00	
M32A1F1-P-50	50.00	attachments with 1 hole	30.0	62.0	92.0	28.0	23.0	10.0	3.00	
M35F4A1.01-C-69	69.00	attachments with 1 hole	60.0	50.0	74.0	25.5	19.0	7.0	2.50	
M40FA1.02-P-50	50.00	attachments with 1 hole	60.0	70.0	98.0	17.5	25.0	10.0	4.00	
M40FK2F1-P-50	50.00	30.00	60.0	67.5	100.0	17.0	25.0	9.0	4.00	
M40F10-F-76.2	76.20	22.20	38.3	76.2	106.5	19.0	26.0	9.4	4.00	40.0
M80K1F1-P-100	100.00	attachments with 1 hole	30.0	96.0	138.0	35.0	35.0	11.0	5.00	
M80K2F1-B-100	100.00	70.00	100.0	96.0	130.0	35.0	35.0	11.0	5.00	
M80F5K1-B-100	100.00	attachments with 1 hole	60.0	100.0	156.0	23.2	35.0	13.0x1.70	5.00	
M112K2F1-S-125	125.00	80.00	110.0	85.8	115.8	35.0	40.0	13.0	6.00	

- We are manufacturers of engineering and special chains, for every type of industry.

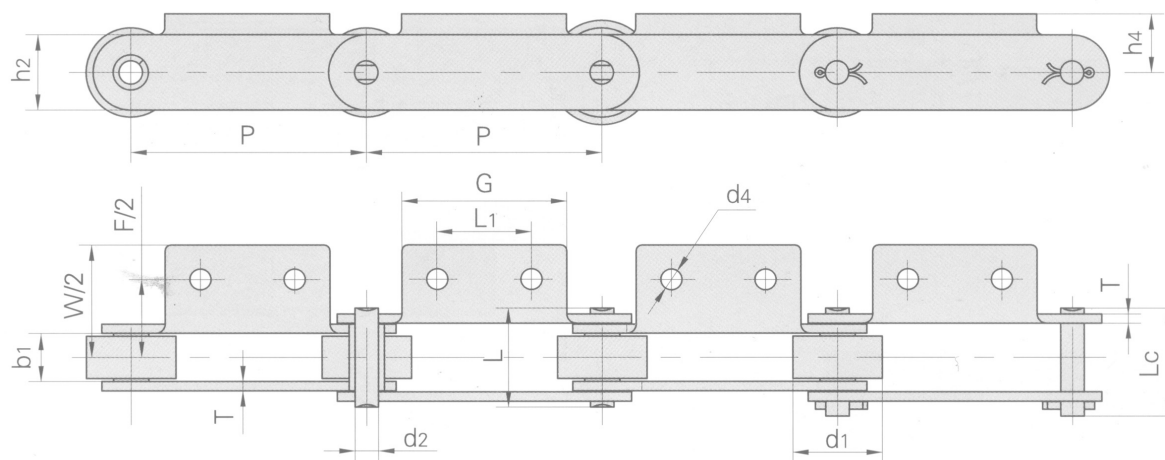
- In the chain market, our products are of the highest quality, and are manufactured under the international standards ANSI B29.1 M-2002 (DIN 3183) and ISO 606.

Conveyor Chains With Attachments-M Series

RAK CHAIN NO.	P	L	G	F	W	h4	h2	d4	T	d5
	MM	MM	MM	MM	MM	MM	MM	MM	MM	MM
M112F3-F-200	200.00	90.00	120.0	102.0	137.5	40.0	45.0	11.0	6.00	75.0
M112F5K2-P-100	100.00	35.00	65.0	98.5	140.0	40.0	40.0	14.0	6.00	
M160F1K2-P-100	100.00	40.00	80.0	124.0	183.0	35.0	40.0	14.0	7.00	
M160F2-B-100	100.00	attachments with 1 hole	110.0	125.0	155.0	45.0	50.0	17.0	7.00	
M160F3K1F1-P-101.6	100.00	attachments with 1 hole	56.0	175.0	204.0	38.0	51.0	11.0	7.10/5.10	
M160F12K2-S-100	100.00	30.00	70.0	100.0	120.0	35.0	40.0	13.0	5.60	
M224F6A2-P-160	160.00	80.00	125.0	136.0	182.0	62.0	72.0	17.0	8.00	



Conveyor Chains With Attachments-M Series

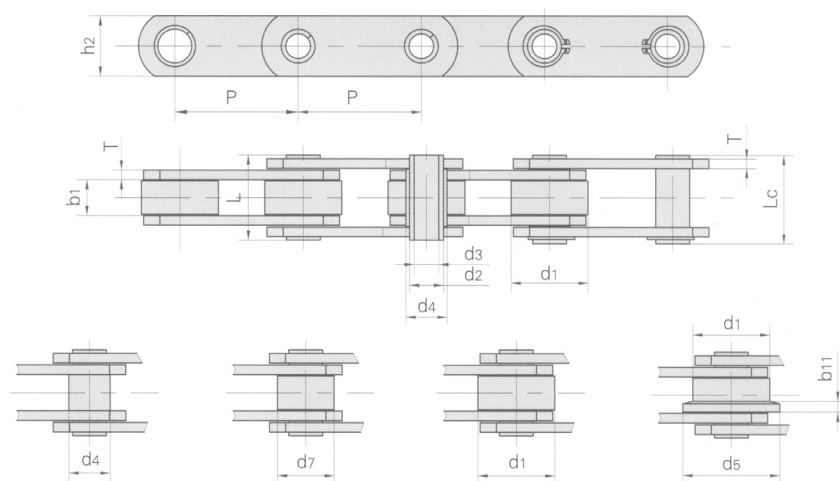


RAK CHAIN NO.	PITCH	ROLLER DIAMETER	WIDTH BETWEEN INNER PLATES	PIN DIAMETER	PIN LENGTH		AVERAGE TENSILE STRENGTH	WEIGHT PER METER
	P	d1 max	b1 min	d2 max	L max	Lc max		
	MM	MM	MM	MM	MM	MM	LB	KG/M
M40F1-P-125	125.0	36.0	38.0	14.27	75.6		9091	10.18
M56F1-P-100	100.0	38.0	20.5	10.00	42.3	46.1	12727	4.63
M56F2-P-100	100.0	42.0	22.5	10.00	44.6	48.5	12727	5.67
M56F3-P-100	100.0	38.0	20.5	10.00	42.3	46.1	12727	4.72
M56F8-P-100	100.0	38.0	17.0	10.00	38.8	42.6	12727	3.79
M56A2-P-125	125.0	42.0	24.0	10.00	46.0	49.5	12727	5.24
M75-P100	100.0	38.0	18.9	9.53	40.4	44.7	17045	4.85
M75-P100F1	100.0	38.0	18.9	9.53	38.4	42.7	17045	4.01
M75-P100F3	100.0	28.5	23.9	11.10	46.3	50.3	17045	4.53
M75F4-P-100	100.0	38.0	18.9	9.53	40.4	44.7	17045	4.62
M160-S-200K2F2	200.0	36.0	36.0	18.00	76.0	80.0	36364	11.40
M224F1K2-P-200	200.0	85.0	42.0	21.00	95.0		50909	21.20

- We are manufacturers of engineering and special chains, for every type of industry.

- In the chain market, our products are of the highest quality, and are manufactured under the international standards ANSI B29.1 M-2002 (DIN 3183) and ISO 606.

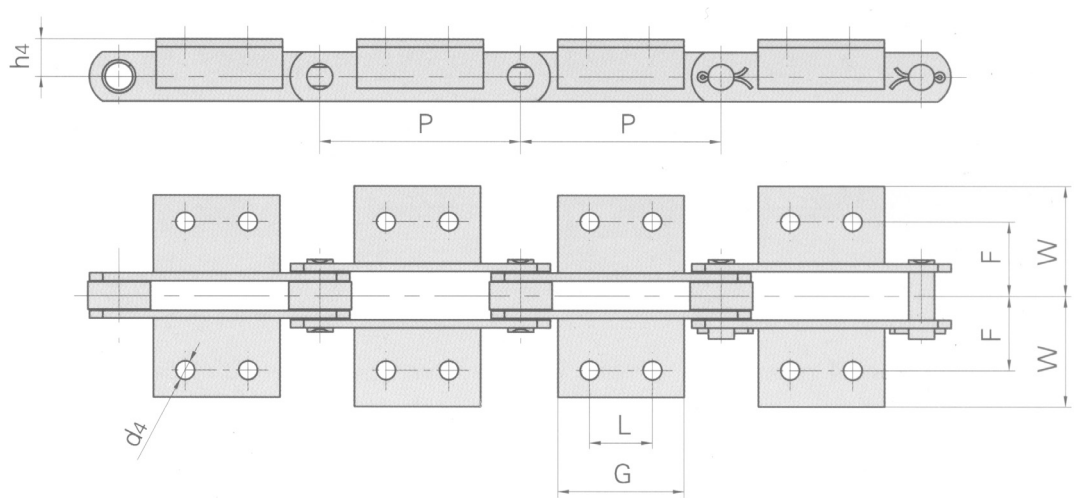
Conveyor Chains With Attachments-M Series



RAK CHAIN NO.	P	L1	G	F	W	h4	h2	d4	T
	MM	MM	MM	MM	MM	MM	MM	MM	MM
M40F1-P-125	125.0	50.0	90.0	100.0	140.0	36.0	50.0	13.0	6.0
M56F1-P-100	100.0	40.0	70.0	67.5	96.6	35.0	25.0	9.0	4.0
M56F2-P-100	100.0	29.7	50.0	124.0	148.0	21.5	32.0	7.0	4.0
M56F3-P-100	100.0	50.0	70.0	71.0	101.0	35.0	25.0	9.0	4.0
M56F8-P-100	100.0	attachments with 1 hole	70.0	63.8	95.0	25.0	25.0	8.2	4.0
M56A2-P-125	125.0	50.0	75.0	88.0	128.0	30.0	30.0	11.0	4.0
M75-P100	100.0	40.0	70.0	64.0	112.0	24.9	26.0	9.0	4.0
M75-P100F1	100.0	40.0	70.0	64.0	112.0	24.4	26.0	9.0	3.5
M75-P100F3	100.0	50.0	70.0	75.7	96.7	35.0	26.0	9.7	4.0
M75F4-P-100	100.0	40.0	70.0	90.0	112.4	24.9	26.0	8.5	4.0
M160-S-200K2F2	200.0	100.0	180.0	103.0	133.0	45.0	51.0	9.0	7.0
M224F1K2-P-200	200.0	80.0	120.0	128.0	168.0	40.0	50.0	14.0	9.0

RAK

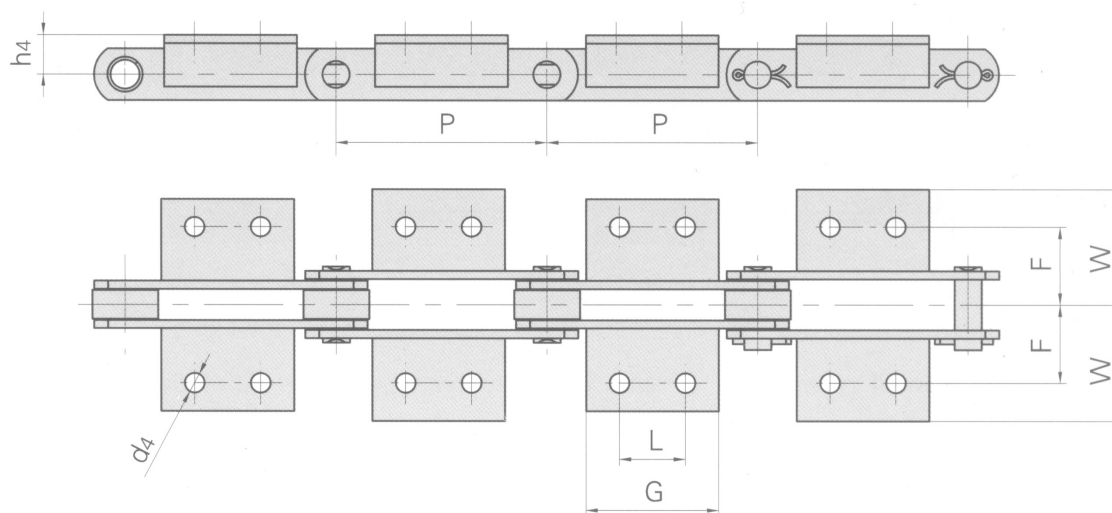
Conveyor Chains With Attachments-FV Series



RAK CHAIN NO.	P	L	G	d4	F	W	h4
	MM	MM	MM	MM	MM	MM	MM
FV40	50.0		45.0	6.5	25.0	64.0	20.0
FV40	63.0		31.0	6.5	25.0	40.5	20.0
FV40	80.0	25.0	45.0	6.5	25.0	40.5	20.0
FV40	100.0	30.0	50.0	6.5	25.0	40.5	20.0
FV40	125.0	30.0	60.0	6.5	25.0	40.5	20.0
FV63	63.0		40.0	8.4	34.0	50.0	30.0
FV63	80.0	25.0	45.0	8.4	34.0	50.0	30.0
FV63	100.0	30.0	50.0	8.4	34.0	50.0	30.0
FV63	125.0	40.0	60.0	8.4	34.0	50.0	30.0
FV63	160.0	50.0	70.0	8.4	34.0	50.0	30.0

RAK

Conveyor Chains With Attachments-FV Series

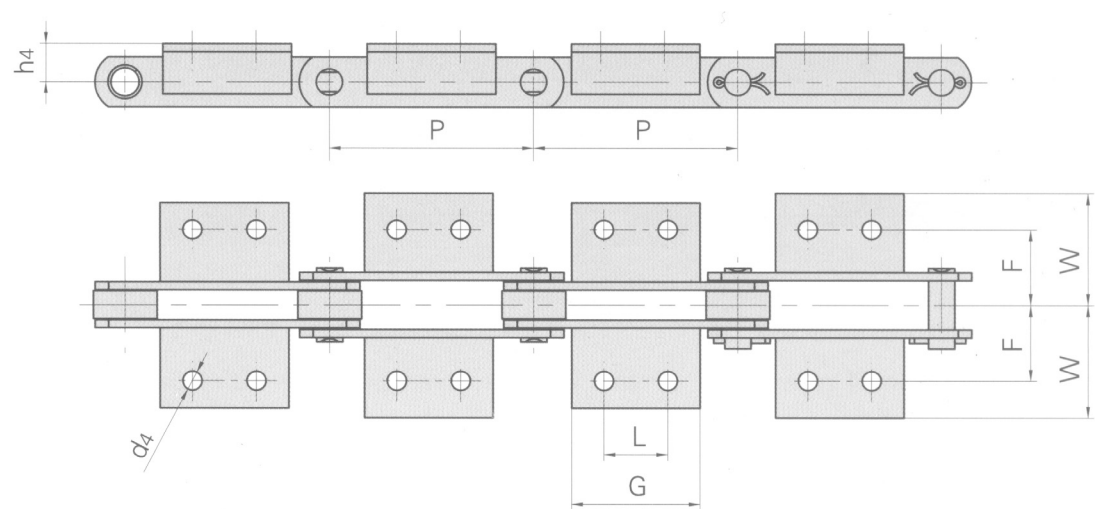


RAK CHAIN NO.	P	L	G	d4	F	W	h4
	MM	MM	MM	MM	MM	MM	MM
FV90	63.0		30.0	8.4	40.0	64.0	35.0
FV90	80.0	25.0	45.0	8.4	40.0	64.0	35.0
FV90	100.0	30.0	50.0	8.4	40.0	64.0	35.0
FV90	125.0	40.0	60.0	8.4	40.0	64.0	35.0
FV90	160.0	50.0	70.0	8.4	40.0	64.0	35.0
FV90	200.0	60.0	80.0	8.4	40.0	64.0	35.0
FV90	250.0	65.0	85.0	8.4	40.0	64.0	35.0
FV112	100.0	30.0	50.0	11.0	50.0	70.0	40.0
FV112	125.0	40.0	65.0	11.0	50.0	70.0	40.0
FV112	160.0	50.0	75.0	11.0	50.0	70.0	40.0
FV112	200.0	65.0	90.0	11.0	50.0	70.0	40.0
FV112	250.0	80.0	105.0	11.0	50.0	70.0	40.0

- We are manufacturers of engineering and special chains, for every type of industry.

- In the chain market, our products are of the highest quality, and are manufactured under the international standards ANSI B29.1 M-2002 (DIN 3183) and ISO 606.

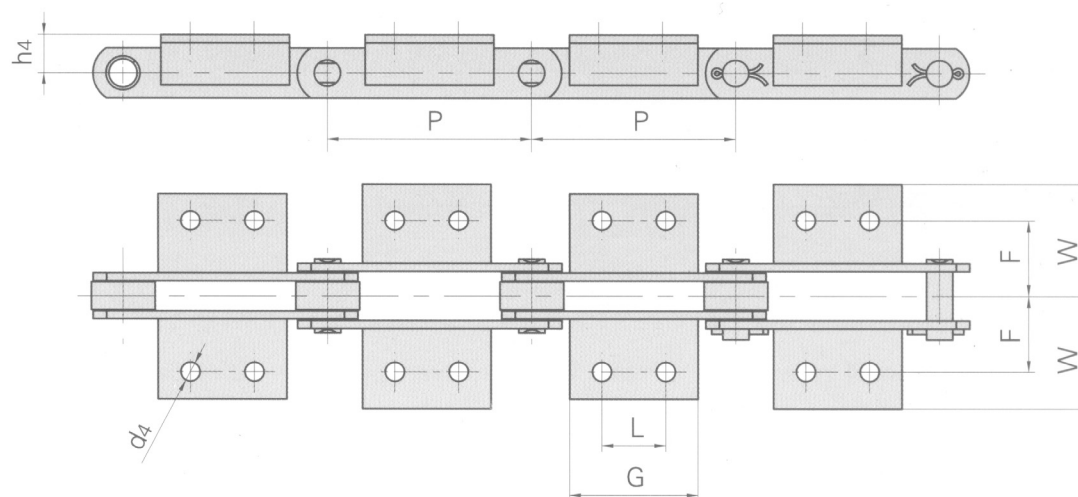
Conveyor Chains With Attachments-FV Series



RAK CHAIN NO.	P	L	G	d4	F	W	h4
	MM	MM	MM	MM	MM	MM	MM
FV140	100.0	30.0	55.0	11.0	50.0	81.0	45.0
FV140	125.0	40.0	65.0	11.0	50.0	81.0	45.0
FV140	160.0	50.0	75.0	11.0	50.0	81.0	45.0
FV140	200.0	65.0	90.0	11.0	50.0	81.0	45.0
FV140	250.0	80.0	105.0	11.0	50.0	81.0	45.0
FV180	125.0	35.0	63.0	13.0	64.0	91.0	45.0
FV180	160.0	50.0	80.0	13.0	64.0	91.0	45.0
FV180	200.0	65.0	95.0	13.0	64.0	91.0	45.0
FV180	250.0	80.0	110.0	13.0	64.0	91.0	45.0
FV180	315.0	100.0	130.0	13.0	64.0	91.0	45.0
FV250	160.0	50.0	80.0	14.0	69.0	106.0	55.0
FV250	200.0	65.0	95.0	14.0	69.0	106.0	55.0

RAK

Conveyor Chains With Attachments-FV Series



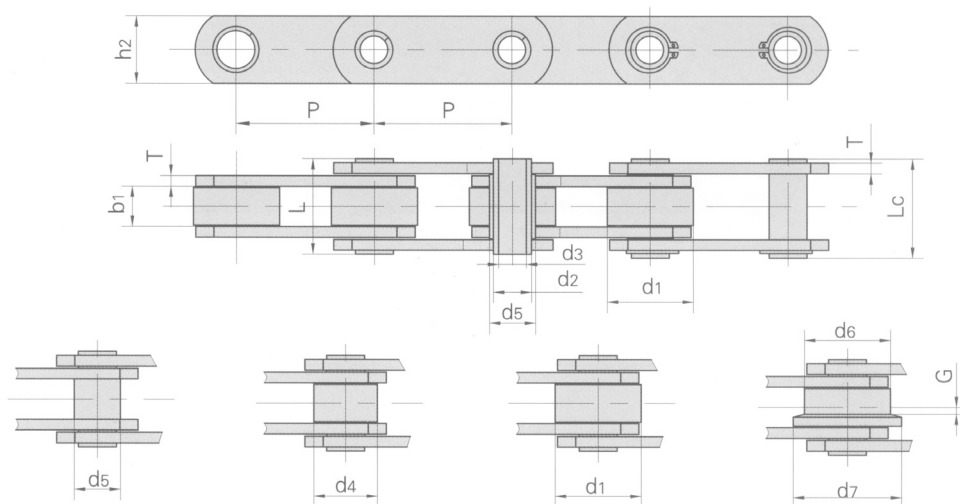
RAK CHAIN NO.	P	L	G	d4	F	W	h4
	MM	MM	MM	MM	MM	MM	MM
FV250	250.0	80.0	110.0	14.0	69.0	106.0	55.0
FV250	315.0	100.0	130.0	14.0	69.0	106.0	55.0
FV250	400.0	100.0	130.0	14.0	69.0	106.0	55.0
FV315	160.0		50.0	14.0	85.0	130.0	60.0
FV315	200.0	65.0	95.0	14.0	85.0	130.0	60.0
FV315	250.0	80.0	110.0	14.0	85.0	130.0	60.0
FV315	315.0	100.0	130.0	14.0	85.0	130.0	60.0
FV315	400.0	100.0	130.0	14.0	85.0	130.0	60.0

- We are manufacturers of engineering and special chains, for every type of industry.

- In the chain market, our products are of the highest quality, and are manufactured under the international standards ANSI B29.1 M-2002 (DIN 3183) and ISO 606.

Conveyor Chains

Conveyor Chains With Attachments-FVC Series

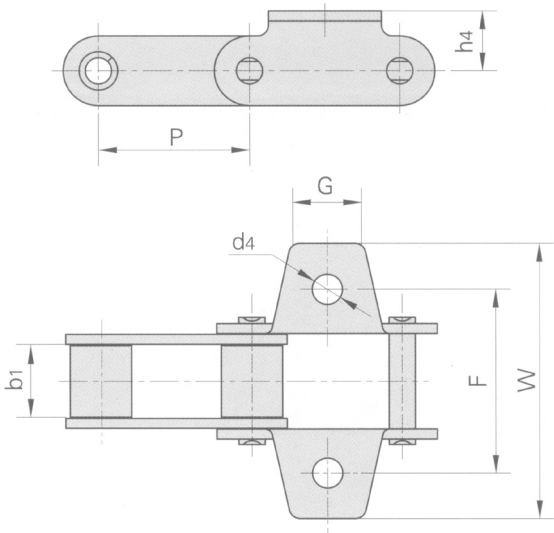


RAK CHAIN NO.	PITCH							ROLLER DIMENSION				
	P							d1 MAX	d4 MAX	d5 MAX	d6 MAX	G
	MM	MM	MM	MM	MM	MM	MM	MM	MM	MM	MM	MM
FVC63	63.0	80.0	100.0	125.0	160.0			40.0	26.0	50.0	63.0	5.0
FVC90	63.0	80.0	100.0	125.0	160.0	200.0	250.0	48.0	30.0	63.0	78.0	6.5
FVC112	100.0	125.0	160.0	200.0	250.0			55.0	32.0	72.0	90.0	7.5
FVC140	100.0	125.0	160.0	200.0	250.0			60.0	36.0	80.0	100.0	9.0
FVC180	125.0	160.0	200.0	250.0	315.0			70.0	42.0	100.0	125.0	13.0
FVC250	160.0	200.0	250.0	315.0	400.0			80.0	50.0	125.0	155.0	15.0
FVC315	160.0	200.0	250.0	315.0	400.0			90.0	60.0	140.0	175.0	18.0

RAK CHAIN NO.	WIDTH BETWEEN INNER PLATES	PIN DIAMETER		BUSH DIAMETER	PIN LENGTH		PLATE THICKNESS	PLATE DEPTH	AVERAGE TENSILE STRENGTH
	b1 MIN	d2 MAX	d3 MIN	d5 MAX	L MAX	Lc MAX	T MAX	h2 MAX	
	MM	MM	MM	MM	MM	MM	MM	MM	LBS
FVC63	22.0	12.0	8.0	18.0	45.0	50.5	4.0	30.0	10500
FVC90	25.0	14.0	10.0	20.0	53.0	56.5	5.0	35.0	16600
FVC112	30.0	16.0	11.0	22.0	62.0	63.0	6.0	40.0	20600
FVC140	35.0	18.0	12.0	26.0	67.0	68.5	6.0	45.0	27000
FVC180	45.0	20.0	14.0	30.0	86.0	88.0	8.0	50.0	33000
FVC250	55.0	26.0	18.0	36.0	97.0	103.5	8.0	60.0	50000
FVC315	65.0	30.0	20.0	42.0	117.0	121.5	10.0	70.0	69000

RAK

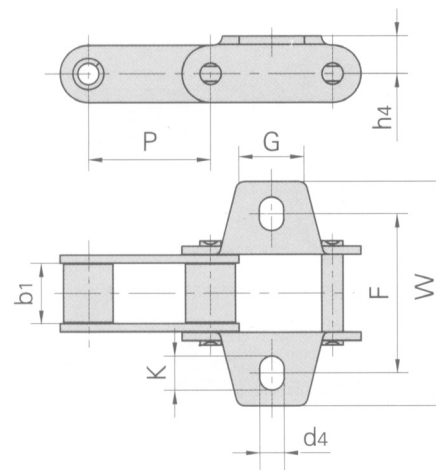
C Type Chains with Attachments



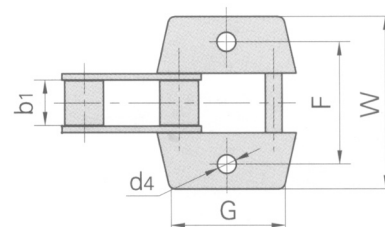
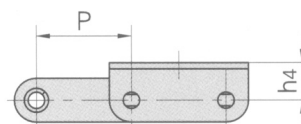
RAK CHAIN NO.	P	b1	G	F	W	h4	d4
	MM	MM	MM	MM	MM	MM	MM
CA 550F2	38.40	19.50	22.00	50.80	72.00	14.70	8.50
CA550F1K1	41.40	19.81	22.00	54.00	76.20	16.50	8.30
CA550F2K1	41.40	19.81	20.00	50.80	76.20	16.50	8.30
CA550K25	41.40	19.81	22.23	50.80	71.40	12.70	8.70
CA557K1	41.40	20.24	22.00	50.80	72.00	15.90	8.70
CA550VK1	41.40	19.05	27.00	54.00	75.54	16.50	8.50
CA550VK1F1	41.40	19.05	27.00	50.80	75.54	16.50	8.50
CA550F4K19	41.40	20.24	22.23	50.80	77.80	12.70	6.75

RAK

C Type Chains With Attachments



RAK CHAIN NO.	P	b1	G	F	W	h4	d4	K
	MM	MM	MM	MM	MM	MM	MM	MM
CA 550K1	41.40	19.81	22.00	52.50	76.20	12.70	8.30	10
CA550K1F3	41.40	19.81	22.00	54.00	76.20	12.70	8.30	11.5
CA550F4K19F1	41.40	20.24	22.23	52.50	76.20	12.70	8.30	10

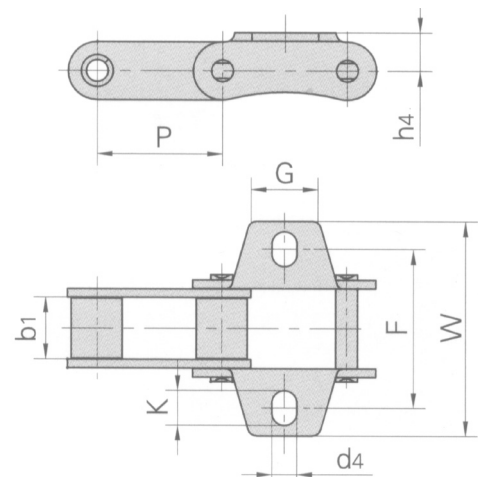


RAK CHAIN NO.	P	b1	G	F	W	h4	d4
	MM	MM	MM	MM	MM	MM	MM
CA 550K1F4	41.40	19.81	48.50	54.00	76.20	16.50	8.50
CA550K1F3V	41.40	19.05	56.00	54.00	75.54	16.50	8.50
CA620A1F1	42.01	24.51	63.50	67.70	91.70	16.50	10.50

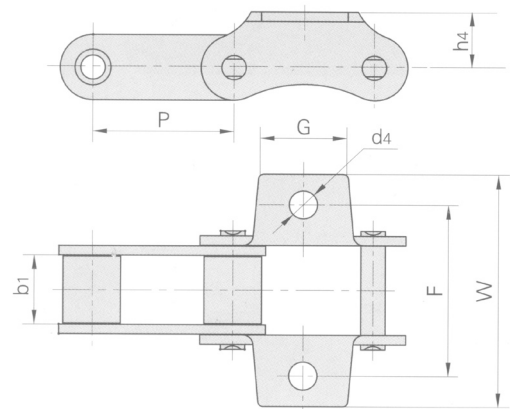
- We are manufacturers of engineering and special chains, for every type of industry.

- In the chain market, our products are of the highest quality, and are manufactured under the international standards ANSI B29.1 M-2002 (DIN 3183) and ISO 606.

C Type Chains With Attachments



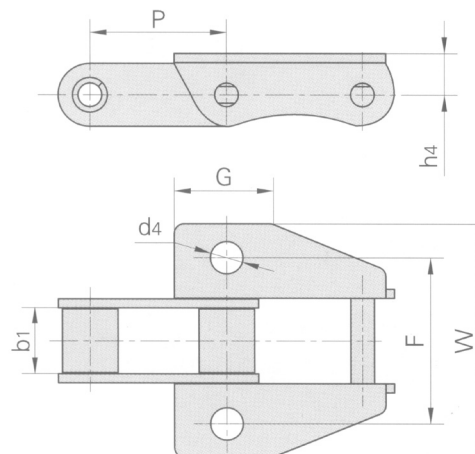
RAK CHAIN NO.	P	b1	G	F	W	h4	d4	K
	MM	MM	MM	MM	MM	MM	MM	MM
CA 550K19	41.40	19.81	22.00	50.80	71.00	12.70	8.30	11.00
CA550K19F1	41.40	19.81	22.00	54.00	71.00	12.70	8.30	11.00
CA550K19F2	41.40	19.81	25.40	50.80	71.00	16.50	8.30	11.50



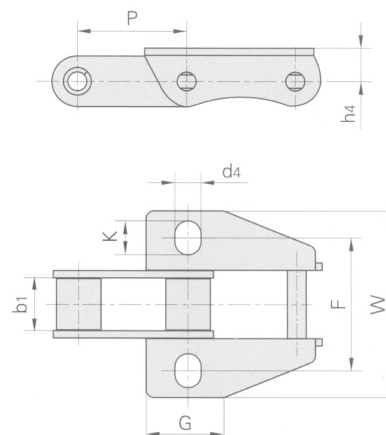
RAK CHAIN NO.	P	b1	G	F	W	h4	d4
	MM	MM	MM	MM	MM	MM	MM
CA 550F1	41.40	19.81	22.23	53.95	70.60	12.70	9.90
CA550K19F3	41.40	19.81	25.50	50.80	68.40	16.50	8.33



C Type Chains With Attachments



RAK CHAIN NO.	P	b1	G	F	W	h4	d4
	MM	MM	MM	MM	MM	MM	MM
CA 550K39M	41.40	19.81	29.50	50.80	71.40	12.70	9.80
CA557K39M	41.40	20.24	29.50	50.80	71.40	12.70	9.80
CA557K39MF1	41.40	20.24	22.00	57.15	77.59	13.97	9.90

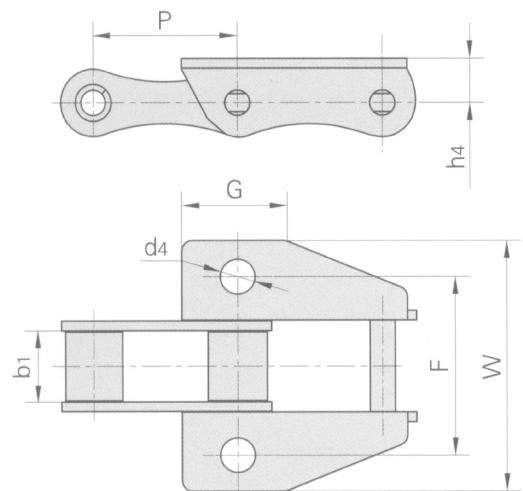


RAK CHAIN NO.	P	b1	G	F	W	h4	d4	K
	MM	MM	MM	MM	MM	MM	MM	MM
CA 550K39MF2	41.40	19.81	29.50	50.80	71.40	12.70	9.90	13
CA557K39MF2	41.40	20.24	29.50	50.80	71.40	12.70	9.90	13

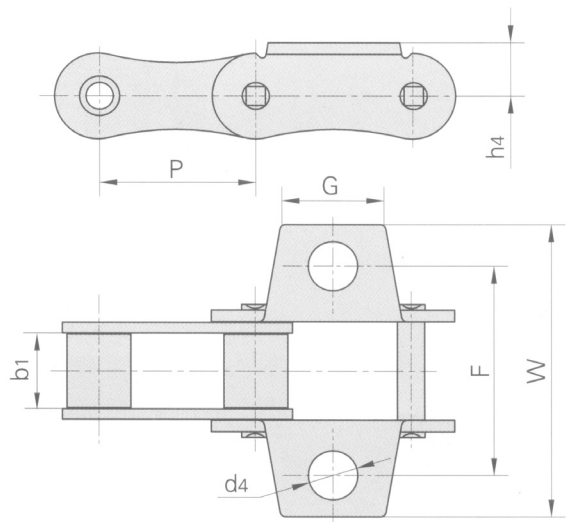
- We are manufacturers of engineering and special chains, for every type of industry.

- In the chain market, our products are of the highest quality, and are manufactured under the international standards ANSI B29.1 M-2002 (DIN 3183) and ISO 606.

C Type Chains With Attachments



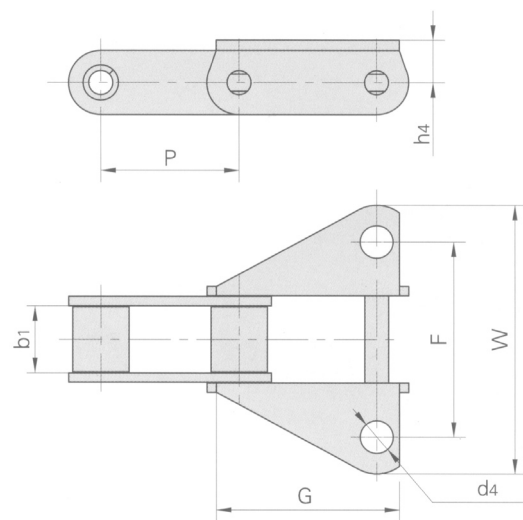
RAK CHAIN NO.	P	b1	G	F	W	h4	d4
	MM	MM	MM	MM	MM	MM	MM
A 557K39M	41.40	20.24	29.50	56.70	77.80	13.50	10.10



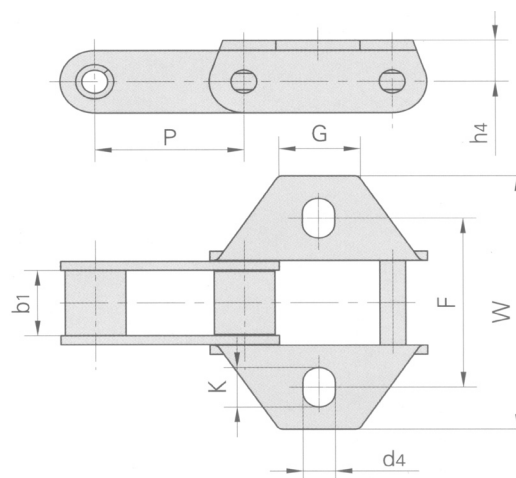
RAK CHAIN NO.	P	b1	G	F	W	h4	d4
	MM	MM	MM	MM	MM	MM	MM
A 557K27S	41.40	20.24	28.60	57.15	79.35	14.30	13.10



C Type Chains With Attachments



RAK CHAIN NO.	P	b1	G	F	W	h4	d4
	MM	MM	MM	MM	MM	MM	MM
CA 557F1	41.40	20.24	60.00	53.94	76.20	14.60	9.90

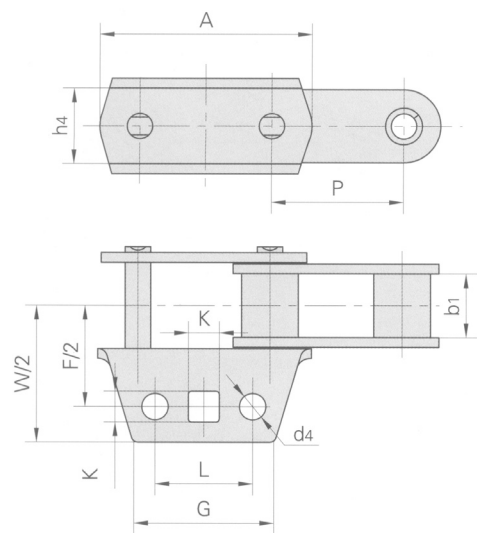


RAK CHAIN NO.	P	b1	G	F	W	h4	d4	K
	MM	MM	MM	MM	MM	MM	MM	MM
CA 557F2	41.40	20.24	22.23	53.98	79.30	14.30	9.90	13.6

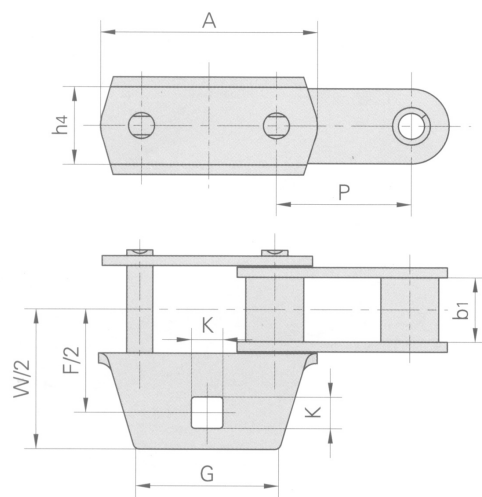
- We are manufacturers of engineering and special chains, for every type of industry.

- In the chain market, our products are of the highest quality, and are manufactured under the international standards ANSI B29.1 M-2002 (DIN 3183) and ISO 606.

C Type Chains With Attachments



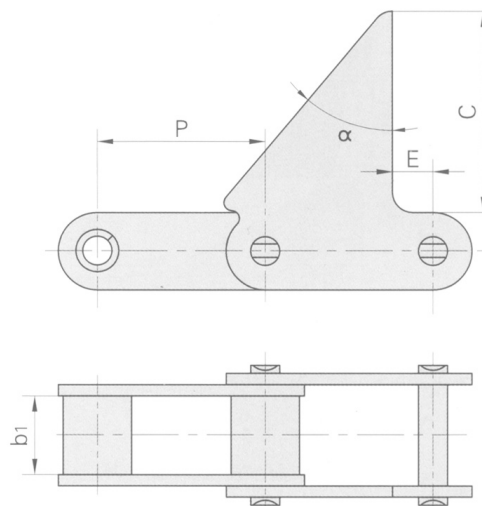
RAK CHAIN NO.	P	b1	A	L	G	F	W	h4	d4	k
	MM	MM	MM	MM	MM	MM	MM	MM	MM	MM
CA 557F3	41.40	20.24	66.55	30.22	44.45	64.14	86.60	23.90	8.25	9.70



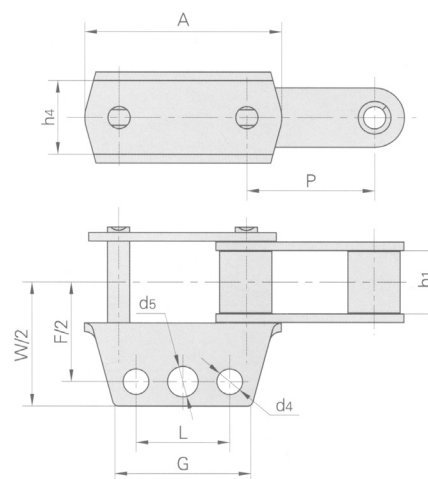
RAK CHAIN NO.	P	b1	G	F	W	h4	d4	K
	MM	MM	MM	MM	MM	MM	MM	MM
CA 557F4	41.40	20.24	66.55	44.45	64.14	86.60	23.90	9.70



C Type Chains With Attachments



RAK CHAIN NO.	P	b1	C	α	E
	MM	MM	MM		MM
CA 550F6	41.40	19.81	50.00	40°	10.00

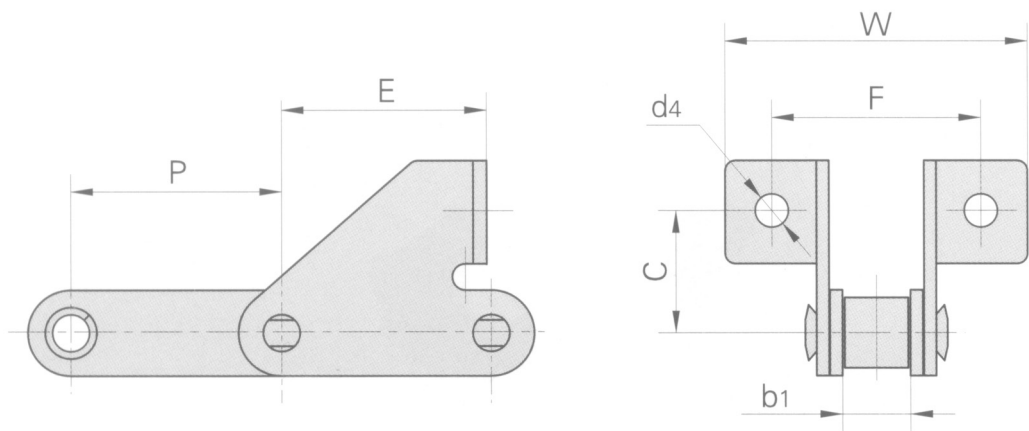


RAK CHAIN NO.	P	b1	A	L	G	F	W	h4	d4	d5
	MM	MM	MM	MM	MM	MM	MM	MM	MM	MM
CA 550F7	41.40	19.81	63.50	30.22	44.45	64.10	81.40	23.88	8.25	9.90

- We are manufacturers of engineering and special chains, for every type of industry.

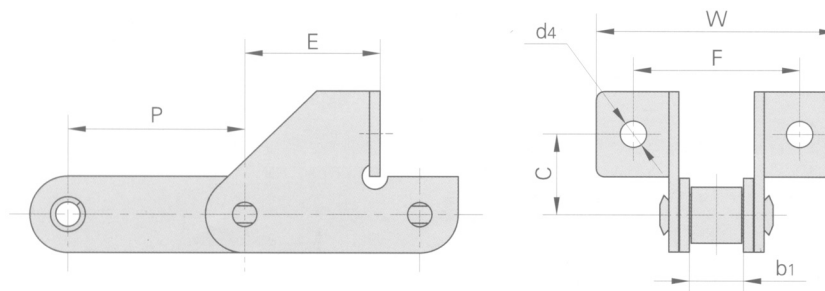
- In the chain market, our products are of the highest quality, and are manufactured under the international standards ANSI B29.1 M-2002 (DIN 3183) and ISO 606.

C Type Chains With Attachments

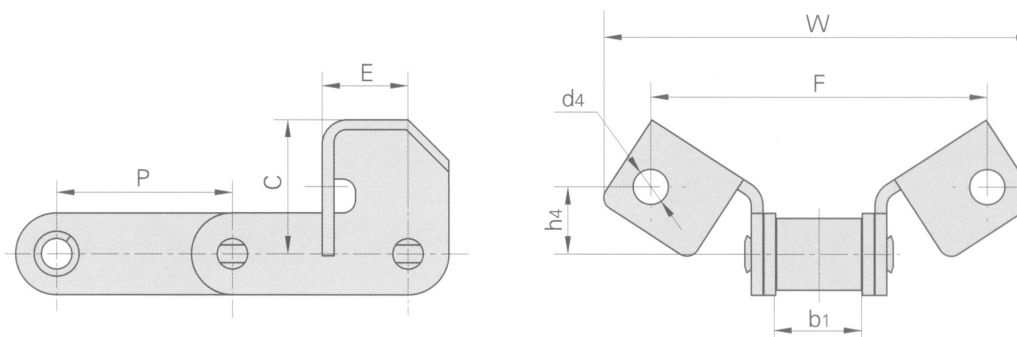


RAK CHAIN NO.	P	b1	E	F	W	C	d4
	MM	MM	MM	MM	MM	MM	MM
CA 550SDF1	41.40	19.81	35.00	58.00	85.00	20.50	8.50
CA550SDF2	41.40	19.81	32.50	62.00	84.00	20.00	8.60
CA550SDF3	41.40	19.81	35.00	58.00	85.00	20.50	6.50
CA550SDF6	41.40	19.81	44.00	58.00	85.00	20.50	6.50
CA550SDF7	41.40	19.81	42.50	62.00	89.00	20.00	8.60
CA5505SD	41.40	20.24	33.00	57.80	83.50	20.00	6.70
CA550SDF8	41.40	19.81	33.00	58.00	85.90	20.50	6.50

C Type Chains With Attachments



RAK CHAIN NO.	P	b1	E	F	W	C	d4
	MM	MM	MM	MM	MM	MM	MM
CA 550SD	41.10	19.81	36.90	47.60	68.20	31.00	8.70
CA550SDF4	41.40	19.81	36.90	47.60	89.00	31.00	8.70

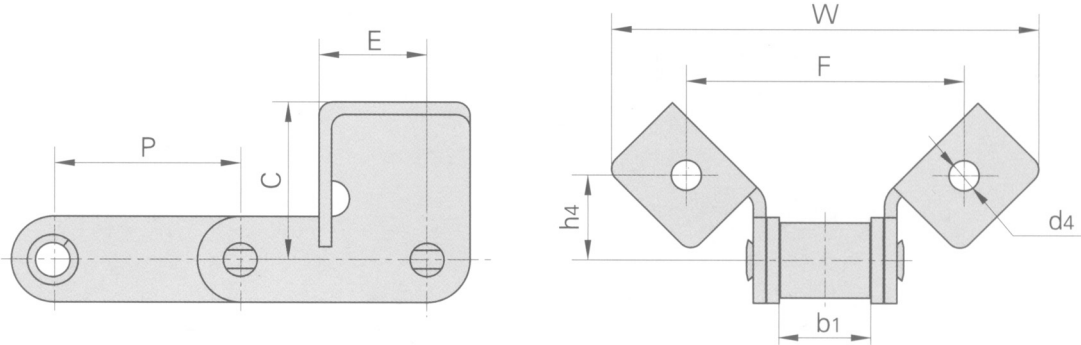


RAK CHAIN NO.	P	b1	E	C	F	W	h4	d4
	MM	MM	MM	MM	MM	MM	MM	MM
CA 550F14	41.40	19.80	20.24	31.75	79.40	101.60	15.90	8.33
CA550SDF16	41.40	20.00	22.30	39.00	78.00	109.20	17.70	8.00

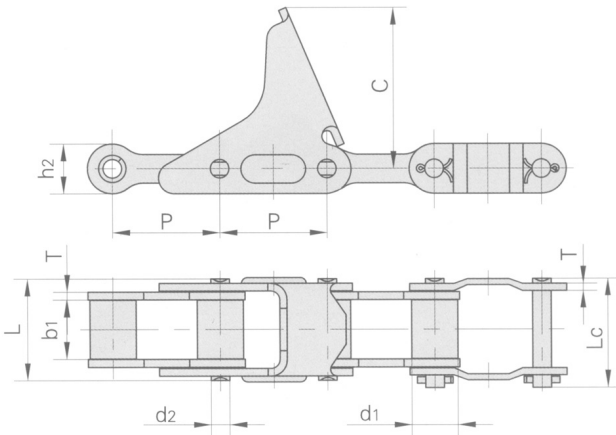
- We are manufacturers of engineering and special chains, for every type of industry.

- In the chain market, our products are of the highest quality, and are manufactured under the international standards ANSI B29.1 M-2002 (DIN 3183) and ISO 606.

C Type Chains With Attachments



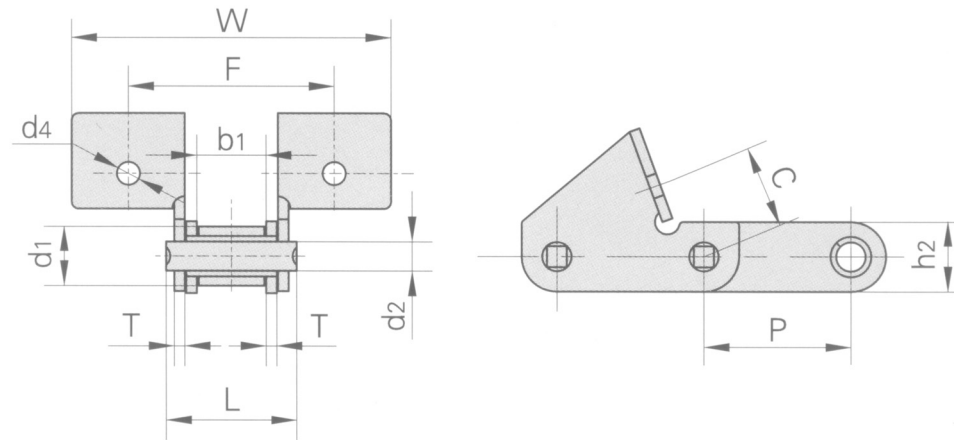
RAK CHAIN NO.	P	b1	E	C	F	W	h4	d4
	MM	MM	MM	MM	MM	MM	MM	MM
CA 550F15	41.40	19.81	24.00	35.26	61.98	95.25	19.05	6.73
CA550F17	41.40	19.81	23.68	40.89	114.30	143.70	20.57	9.91
CA550VF13	41.40	19.05	25.40	59.60	79.35	135.45	28.60	8.74



RAK CHAIN NO.	PITCH	ROLLER DIAMETER	WIDTH BETWEEN INNER PLATES	PIN DIAMETER	PIN LENGTH		PLATE DIMENSIONS			AVERAGE TENSILE STRENGTH	WEIGHT PER METER
	P	d1	b1 MIN	d2 MAX	L MAX	Lc MAX	h2 MAX	T MAX	C	LB	KG/M
	MM	MM	MM	MM	MM	MM	MM	MM	MM		
CA 555F1	41.40	17.85	23.00	8.20	39.50	42.40	20.00	3.00	84	8920	2.99
CA555F2	41.40	17.85	23.00	8.20	39.50	42.40	20.00	3.00	62.5	8920	2.82



C Type Chains With Attachments



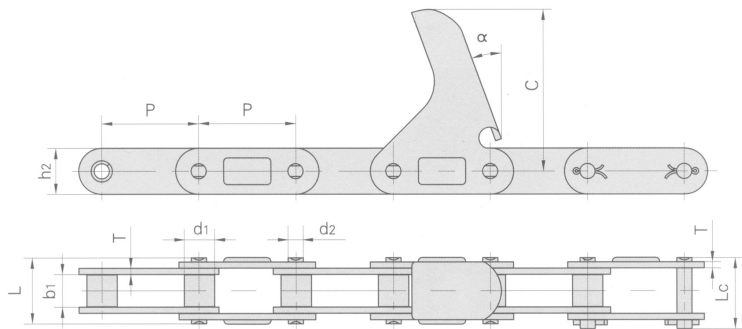
RAK CHAIN NO.	P	C	F	W	d4
	MM	MM	MM	MM	MM
CA 550F1V	41.40	23.40	58.00	90.00	6.5

RAK CHAIN NO.	PITCH	ROLLER DIAMETER	WIDTH BETWEEN INNER PLATES	PIN DIAMETER	PIN LENGTH	PLATE DIMENSION		AVERAGE TENSILE STRENGTH	WEIGHT PER METER
	P	d1	b1 MIN	d2 MAX	L MAX	h2 MAX	T MAX		
	MM	MM	MM	MM	MM	MM	MM	LB	KG/M
CA 550F1V	41.40	16.80	19.50	8.28	36.7	19.80	3.00	9450	2.5

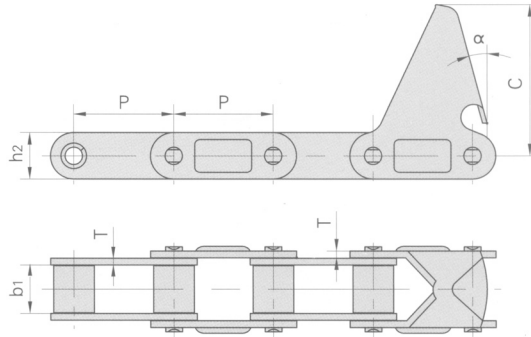
- We are manufacturers of engineering and special chains, for every type of industry.

- In the chain market, our products are of the highest quality, and are manufactured under the international standards ANSI B29.1 M-2002 (DIN 3183) and ISO 606.

C Type Chains With Attachments



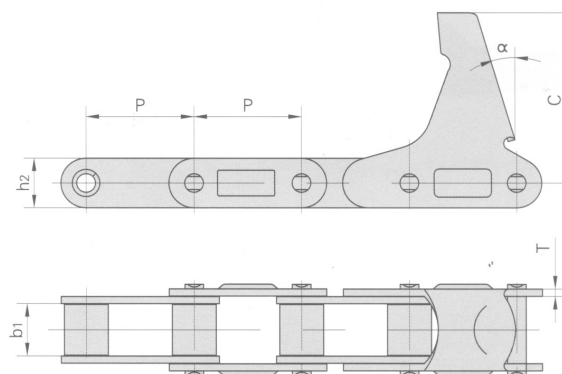
RAK CHAIN NO.	PITCH	ROLLER DIAMETER	WIDTH BETWEEN INNER PLATES	PIN DIAMETER	PIN LENGTH		PLATE DIMENSION				AVERAGE TENSILE STRENGTH	WEIGHT PER METER
	P	d1 max	b1 min	d2 max	L max	Lc max	h2 max	T	C	α		
	MM	MM	MM	MM	MM	MM	MM	MM	MM		LB	KG/M
CA2060-C6E	38.1	11.91	12.57	5.94	25.9	28.3	18.0	2.42	63.5	20.0°	6996	1.40
CA2060H-C6E	38.1	11.91	12.57	5.94	31.0	31.6	18.0	3.25	63.5	22.5°	6996	1.78



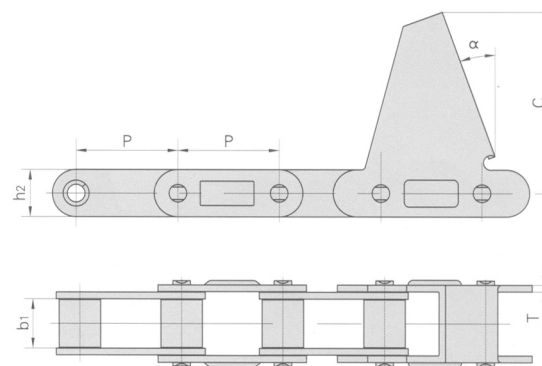
RAK CHAIN NO.	P	b1	h2	T	C	α
	MM	MM	MM	MM	MM	
CA550C6E	41.40	19.81	19.30	2.80	55.6	20°
CA550C11E	41.40	19.81	19.30	2.80	63.5	15°
CA550C11EJ	41.40	19.81	19.30	2.80	66.0	17°
CA550C13E	41.40	19.81	19.30	2.80	92.0	15°
CA550F4C6E	41.40	20.24	19.05	2.80	55.6	22°
CA620C13E	42.01	24.51	20.20	3.25	92.0	15°
CA550C6EF1	41.4	19.81	19.30	2.8	50.0	15°



C Type Chains With Attachments



RAK CHAIN NO.	P	b1	h2	T	C	α
	MM	MM	MM	MM	MM	
C550LV41N	41.4	19.81	19.3	2.8	68.5	15°

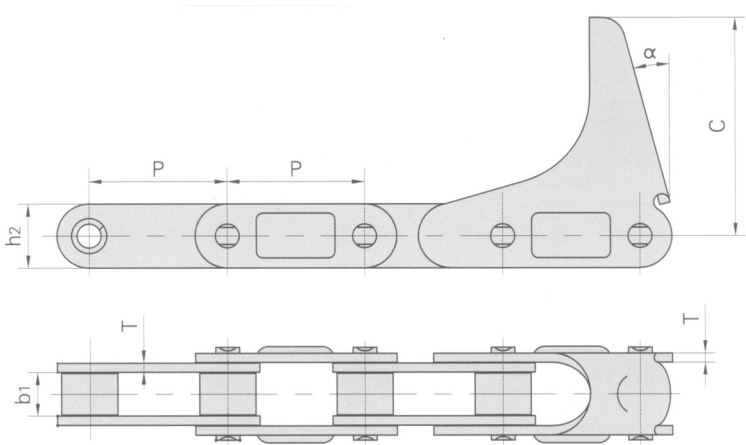


RAK CHAIN NO.	P	b1	h2	T	C	α
	MM	MM	MM	MM	MM	
CA550CPE	41.4	19.81	19.3	2.8	74.5	20°

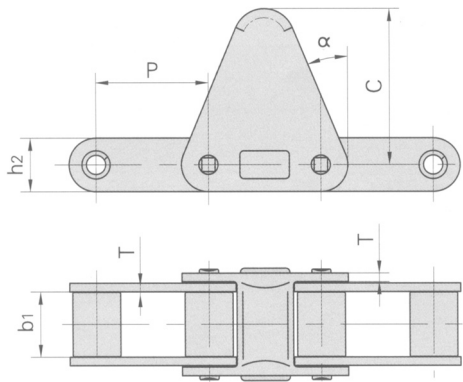
- We are manufacturers of engineering and special chains, for every type of industry.

- In the chain market, our products are of the highest quality, and are manufactured under the international standards ANSI B29.1 M-2002 (DIN 3183) and ISO 606.

C Type Chains With Attachments



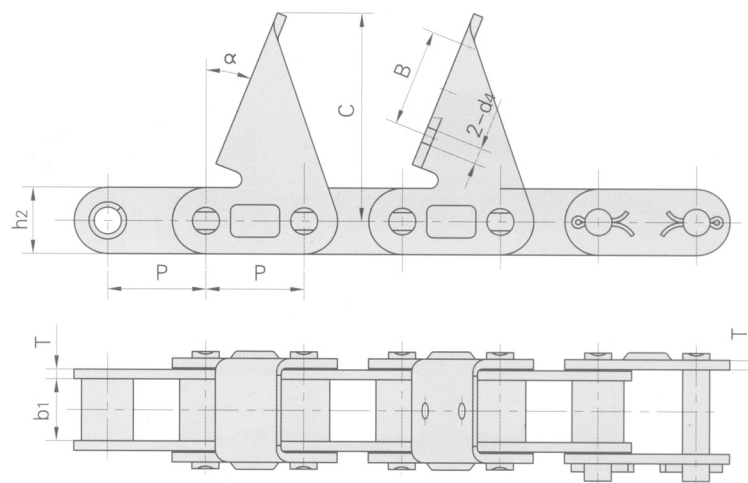
RAK CHAIN NO.	P	b1	h2	T	C	α
	MM	MM	MM	MM	MM	
C555C6E	41.4	12.7	19.3	3.10	63.5	15°
CA555C6EJ	41.4	12.7	19.3	3.25	66.0	15°



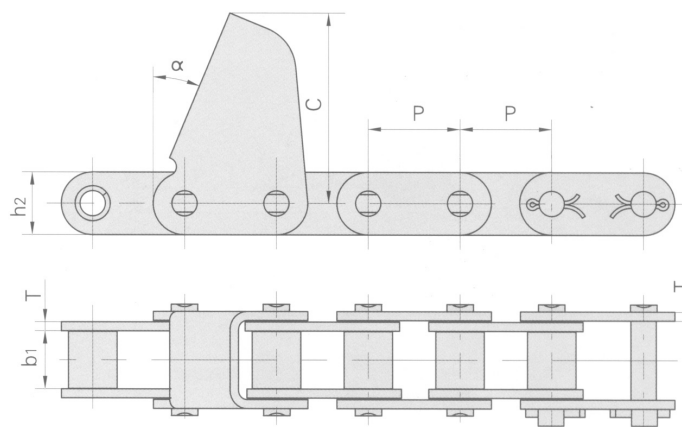
RAK CHAIN NO.	P	b1	h2	T	C	α
	MM	MM	MM	MM	MM	
CA620C30E	42.01	24.51	20.2	3.25	58.7	22.5°

RAK

C Type Chains With Attachments



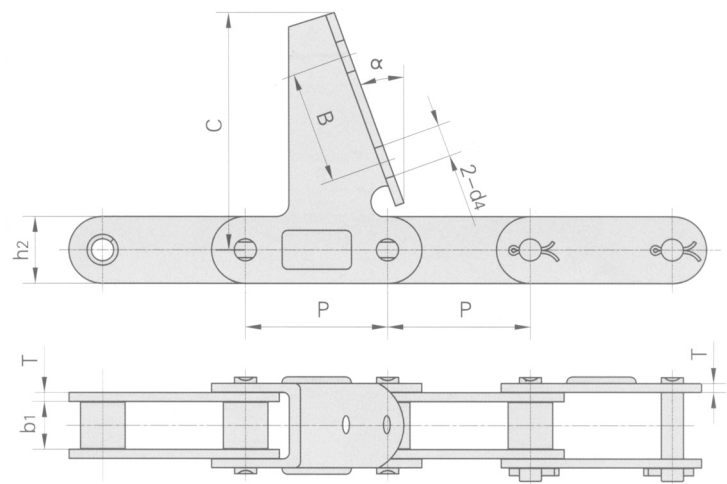
RAK CHAIN NO.	P	b1	h2	B	d4	T	C	α
	MM	MM	MM	MM	MM	MM	MM	
CA627CPE	30.0	19.05	20.5			3.0	64.0	22°
CA627CPEF3	30.0	19.05	20.5	30.0	5.0	3.0	64.0	22°



RAK CHAIN NO.	P	b1	h2	T	C	α
	MM	MM	MM	MM	MM	
CA627CPEF1	30.0	19.05	20.5	3.0	62.5	22.5°
CA627CPEF2	30.0	19.05	20.5	3.0	62.5	22.5°

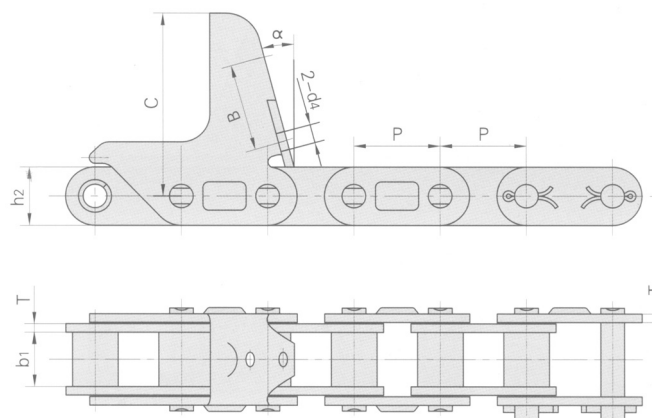
- We are manufacturers of engineering and special chains, for every type of industry.

- In the chain market, our products are of the highest quality, and are manufactured under the international standards ANSI B29.1 M-2002 (DIN 3183) and ISO 606.

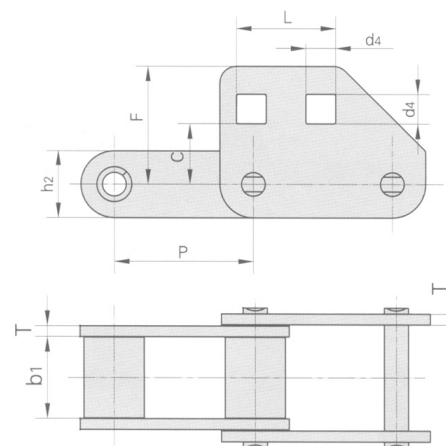


RAK CHAIN NO.	P	b1	h2	d4	T	B	C	α
	MM	MM	MM	MM	MM	MM	MM	
CA2060H7AUE	38.1	12.57	18.0	8.5	3.25	30	57.2	22.5°
CA550CPEF1	41.4	19.81	19.3		2.8		63.5	15°

C Type Chains With Attachments



RAK CHAIN NO.	P	b1	h2	B	d4	T	C	α
	MM	MM	MM	MM	MM	MM	MM	
CA627M40A	30.0	19.05	20.5	36.1	6.5	3.0	63.0	15°

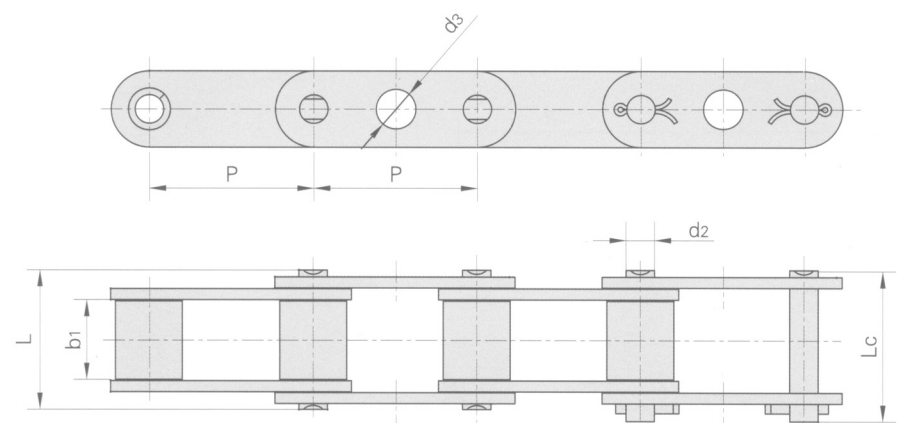


RAK CHAIN NO.	P	b1	L	T	C	F	d4
	MM	MM	MM	MM	MM	MM	MM
CA620F2	42.01	24.51	30	3.25	18.4	35.9	9

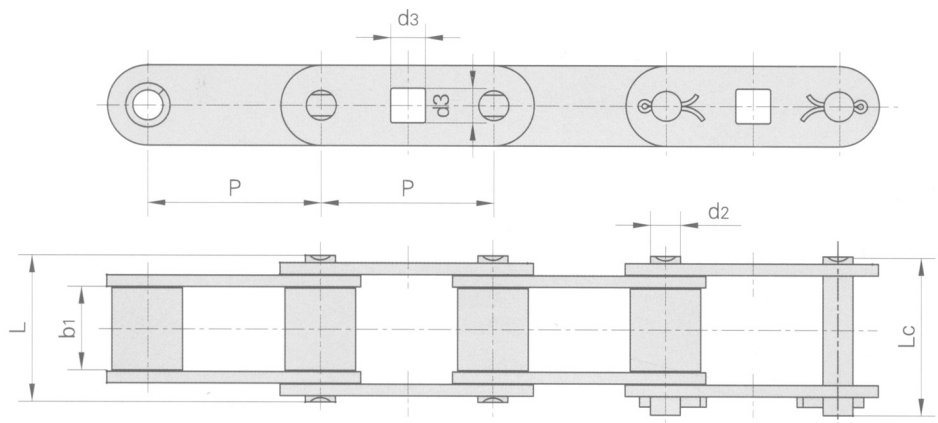
- We are manufacturers of engineering and special chains, for every type of industry.

- In the chain market, our products are of the highest quality, and are manufactured under the international standards ANSI B29.1 M-2002 (DIN 3183) and ISO 606.

C Type Chains With Attachments

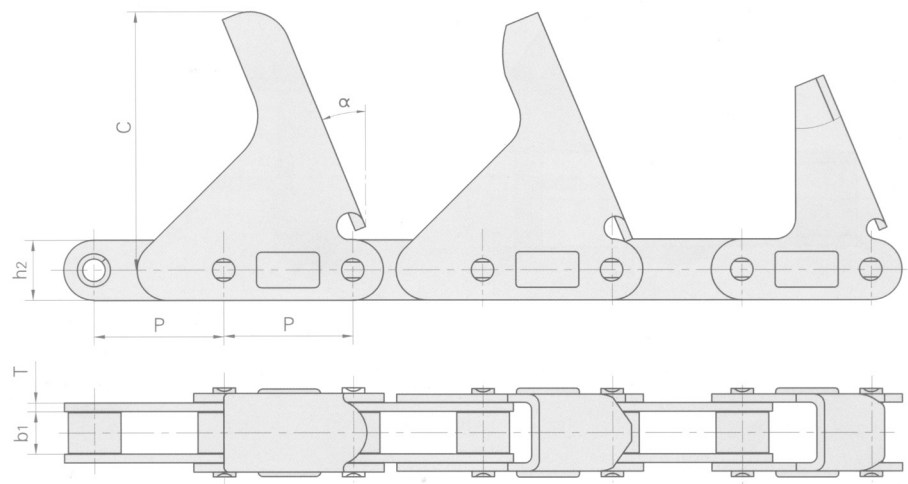


RAK CHAIN NO.	P	b1	d2	d3	L	Lc
	MM	MM	MM	MM	MM	MM
CA550GKF1	41.4	19.81	7.19	10	35	38



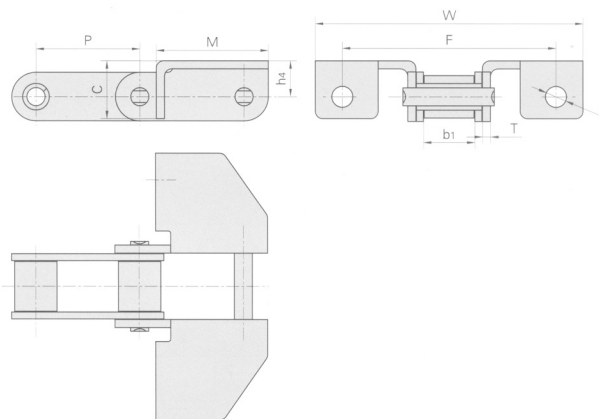
RAK CHAIN NO.	P	b1	d2	d3	L	Lc
	MM	MM	MM	MM	MM	MM
CA550GKF2	41.4	19.81	7.19	8.3	35	38

C Type Chains With Attachments

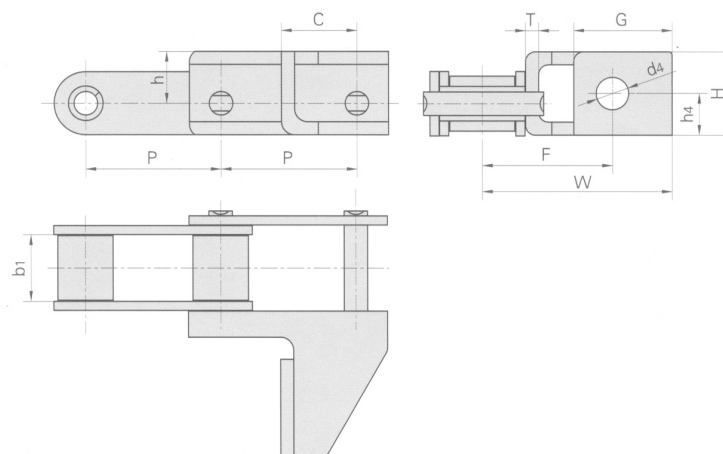


RAK CHAIN NO.	P	b1	h2	T	C	α
	MM	MM	MM	MM	MM	
CA2060HC2E	38.1	12.57	18.0	3.25	76.2	22.5°
CA2060HC4E	38.1	12.57	18.0	3.25	75.8	22.5°
CA2060HC5E	38.1	12.57	18.0	3.25	57.2	22.5°

C Type Chains With Attachments



RAK CHAIN NO.	P	b1	M	C	F	W	T	h4	d4
	MM	MM	MM	MM	MM	MM	MM	MM	MM
CA550F7A	41.4	19.81	44.5	23.3	84.9	106.4	3.25	14.3	8.33
CA550G57	41.4	19.81	44.5	23.3		106.4	3.25	14.3	

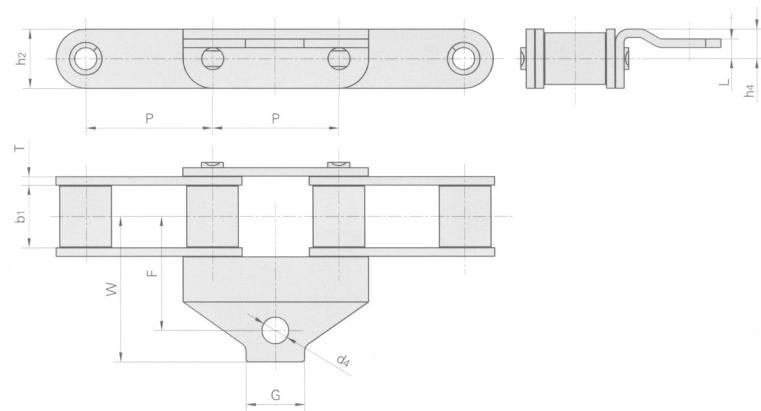


RAK CHAIN NO.	P	b1	C	h	H	G	h4	F	W	T	d4
	MM	MM	MM	MM	MM	MM	MM	MM	MM	MM	MM
CA550G50	41.4	19.81	23.0	17.5	27.2	30.0	12.9	39.7	57.9	4.0	9.92
CA550G50S	41.4	19.81	23.0	15.9	25.6	30.0	12.9	39.7	57.9	4.0	9.92

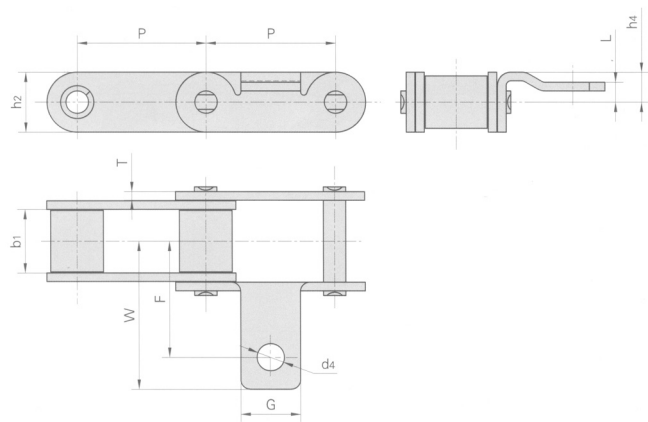
- We are manufacturers of engineering and special chains, for every type of industry.

- In the chain market, our products are of the highest quality, and are manufactured under the international standards ANSI B29.1 M-2002 (DIN 3183) and ISO 606.

C Type Chains With Attachments



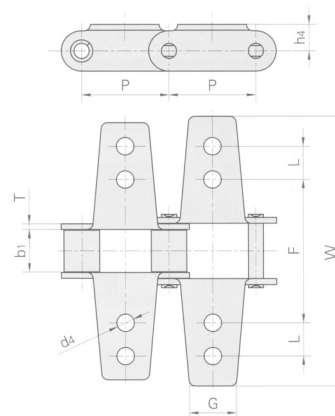
RAK CHAIN NO.	P	b1	G	F	W	h2	L	h4	T	d4
	MM	MM	MM	MM	MM	MM	MM	MM	MM	MM
CA550AID	41.4	19.81	19.1	37.3	47.6	19.3	6.4	9.65	2.8	8.73



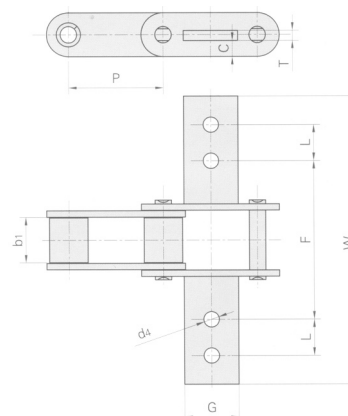
RAK CHAIN NO.	P	b1	G	F	W	h2	L	h4	T	d4
	MM	MM	MM	MM	MM	MM	MM	MM	MM	MM
CA550AID	41.4	19.81	19.1	37.3	47.6	19.3	6.4	9.65	2.8	8.73



C Type Chains With Attachments



RAK CHAIN NO.	P	b1	L	G	F	W	h4	T	d4
	MM	MM	MM	MM	MM	MM	MM	MM	MM
CA550K6	41.40	19.81	15.9	22.2	68.3	128.6	12.7	2.80	8.33
CA620K12	42.01	24.51	15.9	22.2	69.9	130.2	23.8	3.25	6.75

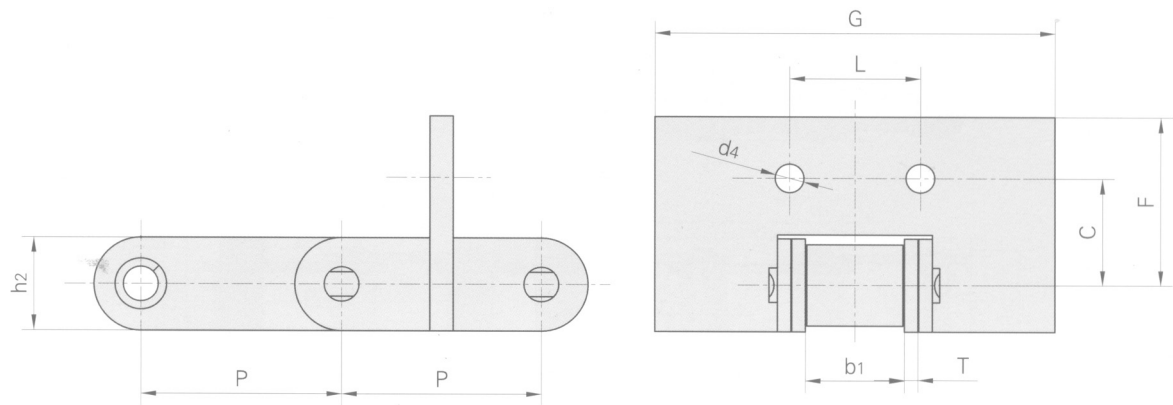


RAK CHAIN NO.	P	b1	G	L	F	W	T	C	d4
	MM	MM	MM	MM	MM	MM	MM	MM	MM
CA550K8	41.40	19.81	23.8	15.9	69.9	127.0	4.3	7.1	6.75
CA550K9	41.40	19.81	23.8	15.9	69.9	127.0	4.3	7.9	6.75

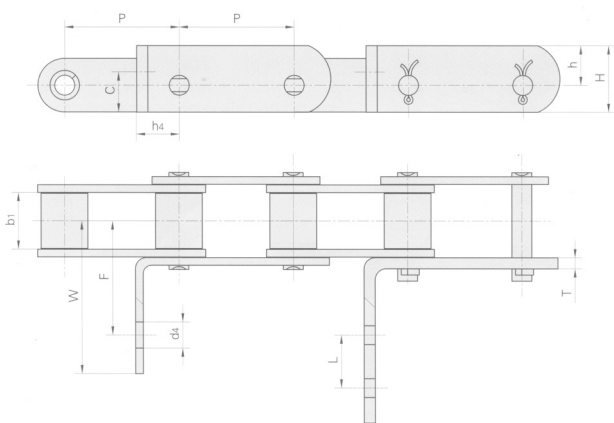
- We are manufacturers of engineering and special chains, for every type of industry.

- In the chain market, our products are of the highest quality, and are manufactured under the international standards ANSI B29.1 M-2002 (DIN 3183) and ISO 606.

C Type Chains With Attachments



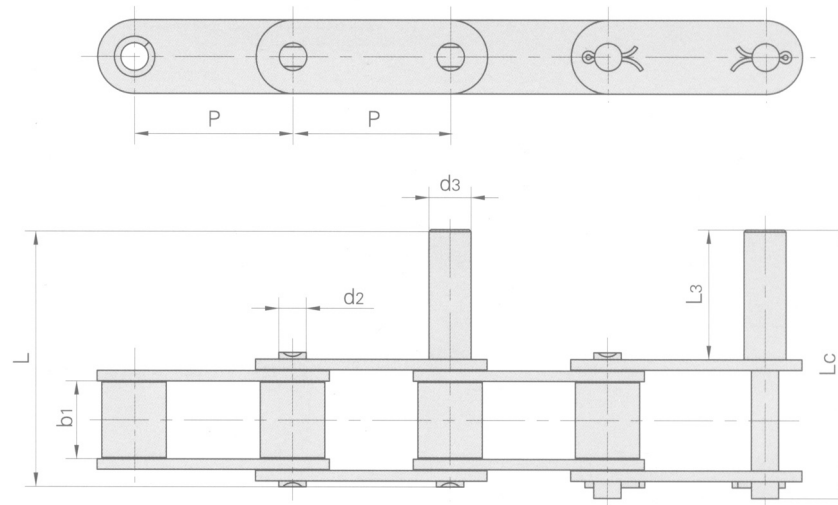
RAK CHAIN NO.	P	b1	C	F	L	G	h2	T	d4
	MM	MM	MM	MM	MM	MM	MM	MM	MM
CA550F11	41.4	19.81	22.2	34.9	27.0	82.6	19.3	2.8	5.95



RAK CHAIN NO.	P	b1	C	h	H	h4	F	L	W	T	d4
	MM	MM	MM	MM	MM	MM	MM	MM	MM	MM	MM
CA550GX	41.4	19.81	14.5	14.3	24.0	15.5	41.7	19.1	73.4	4.00	6.75
CA550G27	41.4	19.81	14.5	14.3	24.0	15.9	41.7		55.2	2.80	8.33
CA550G27S	41.4	19.81	14.5	14.3	24.0	15.9	41.7		55.2	3.25	8.33



C Type Chains With Attachments

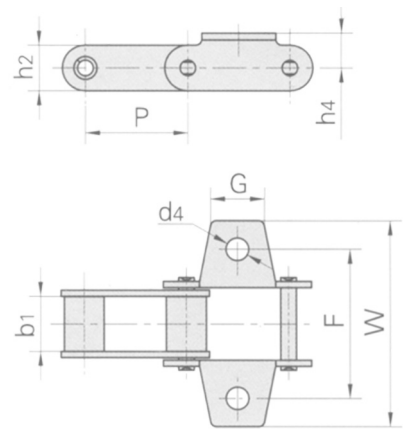


RAK CHAIN NO.	P	b1	d2	d3	L3	L	Lc
	MM	MM	MM	MM	MM	MM	MM
CA550D1	41.4	19.81	7.19	12.7	50.80	84.5	87.5
CA550D2	41.4	19.81	7.19	7.19	31.75	65.4	68.4
CA550D4	41.4	19.81	7.19	11.0	34.00	67.7	70.7

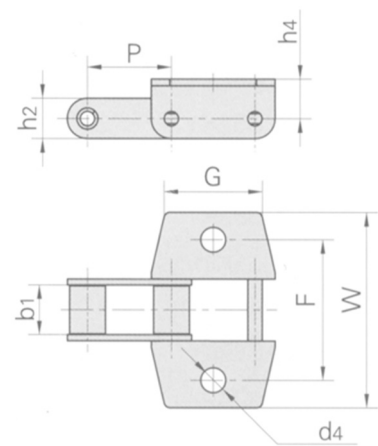
- We are manufacturers of engineering and special chains, for every type of industry.

- In the chain market, our products are of the highest quality, and are manufactured under the international standards ANSI B29.1 M-2002 (DIN 3183) and ISO 606.

V Type Chains With Attachments



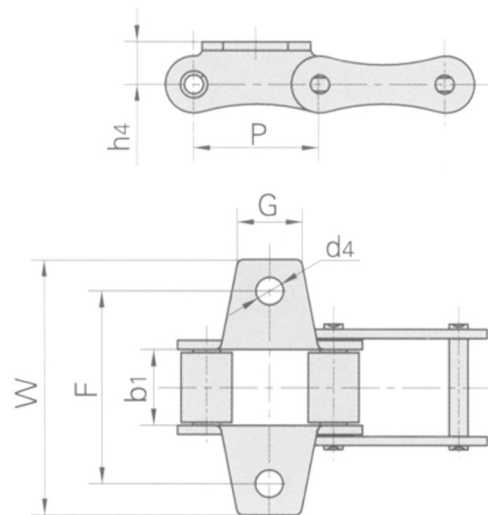
RAK CHAIN NO.	P	b1	G	F	W	h4	d4	h2
	MM	MM	MM	MM	MM	MM	MM	MM
V52F1	38.40	18.50	23.00	57.5	80.0	16.0	8.7	17.5



RAK CHAIN NO.	P	b1	G	F	W	h4	d4	h2
	MM	MM	MM	MM	MM	MM	MM	MM
V52F2	38.40	18.50	39.00	57.0	80.0	16.0	10.5	17.5
V52F7	38.40	19.05	39.00	58.4	82.4	14.5	10.5	20.5



V Type Chains With Attachments

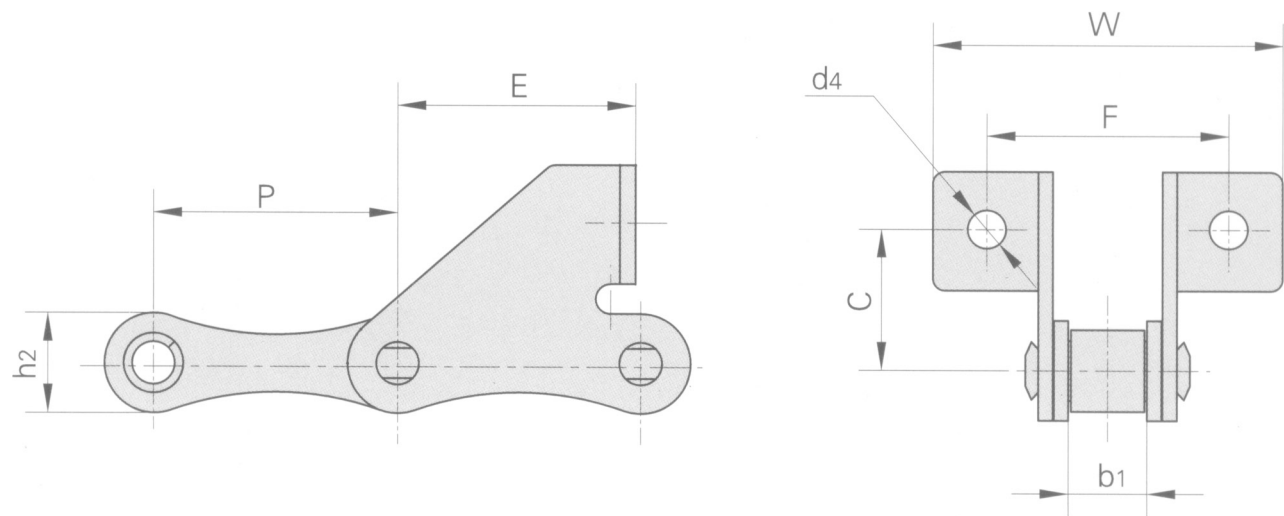


RAK CHAIN NO.	P	b1	G	F	W	h4	d4
	MM	MM	MM	MM	MM	MM	MM
V52F6	38.10	22.23	19.00	51.2	71.7	16.5	8.3

- We are manufacturers of engineering and special chains, for every type of industry.

- In the chain market, our products are of the highest quality, and are manufactured under the international standards ANSI B29.1 M-2002 (DIN 3183) and ISO 606.

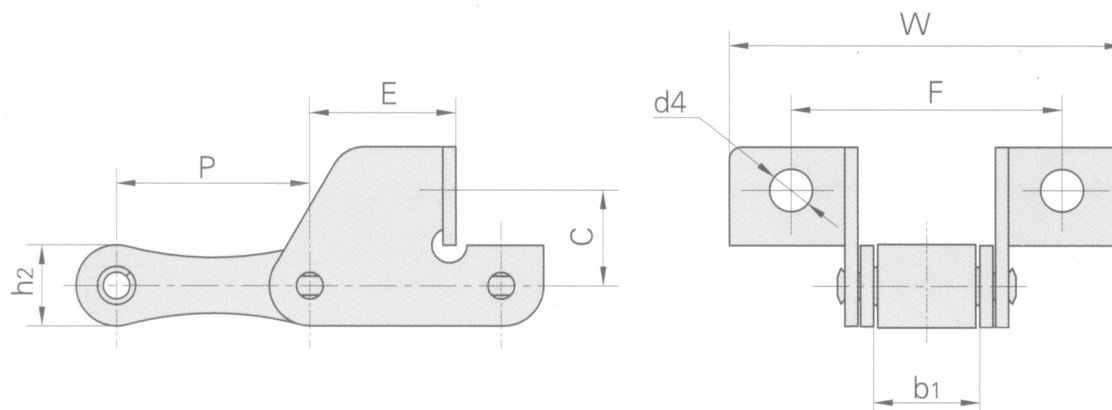
V Chains With Attachments



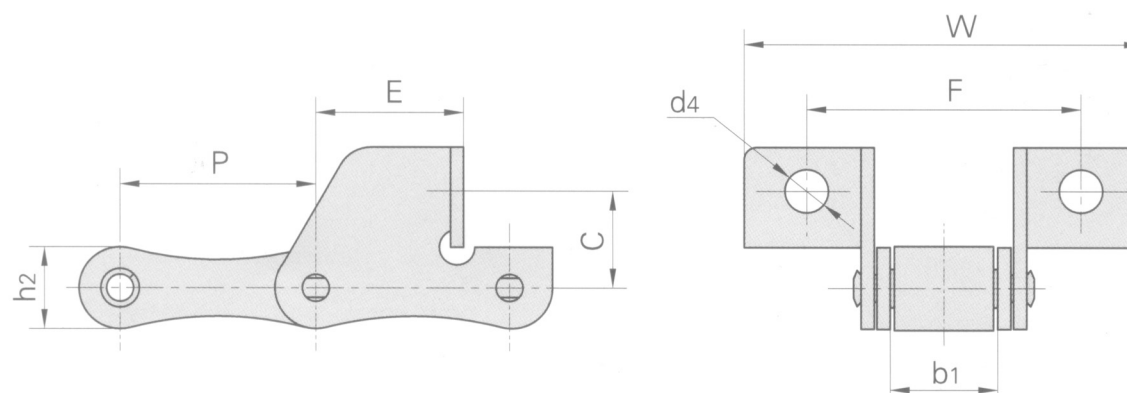
RAK CHAIN NO.	P	b1	C	E	F	W	d4	h2
	MM	MM	MM	MM	MM	MM	MM	MM
V32SD	29.21	15.88	20.0	19.2	58.0	78.0	6.4	13.2
V45F1	41.40	22.23	20.0	37.0	58.0	87.0	6.6	17.3
V45F4	41.40	22.23	20.5	33.2	58.0	85.6	6.6	17.3
V52SD	38.10	22.23	20.0	19.2	62.0	88.5	6.4	17.3
V52F4	38.10	15.80	20.6	37.0	53.8	69.5	6.4	16.7
V52F8	38.10	22.23	20.6	37.0	60.7	76.4	6.4	17.3
V52F9	38.10	18.50	20.0	18.5	54.5	71.0	6.5	16.5
V52LSD	38.10	16.40	20.0	17.5	54.5	71.0	6.5	16.5
V55F2	41.40	22.23	20.00	37.0	58.0	87.0	6.4	17.3
V55F3	41.40	22.23	20.5	33.2	58.0	85.6	6.6	17.3
V55F4	41.40	22.23	20.0	37.0	58.0	87.0	6.6	17.3
V55F6	41.40	22.23	20.0	30.0	58.0	87.0	6.4	17.3
V55F7	41.40	22.23	20.5	33.2	62.0	85.6	6.6	17.3
V62SD	41.91	26.20	20.0	32.6	61.4	92.0	6.4	17.3



V Type Chains With Attachments



RAK CHAIN NO.	P	b1	C	E	F	W	d4	h2
	MM	MM	MM	MM	MM	MM	MM	MM
V45V	41.40	22.23	21.00	28.50	62.4	83.4	8.8	17.3
V45SDF1	41.40	22.23	17.50	31.90	62.0	91.0	8.5	17.3
V55V	41.40	22.23	21.00	28.50	57.5	83.4	6.5	17.3

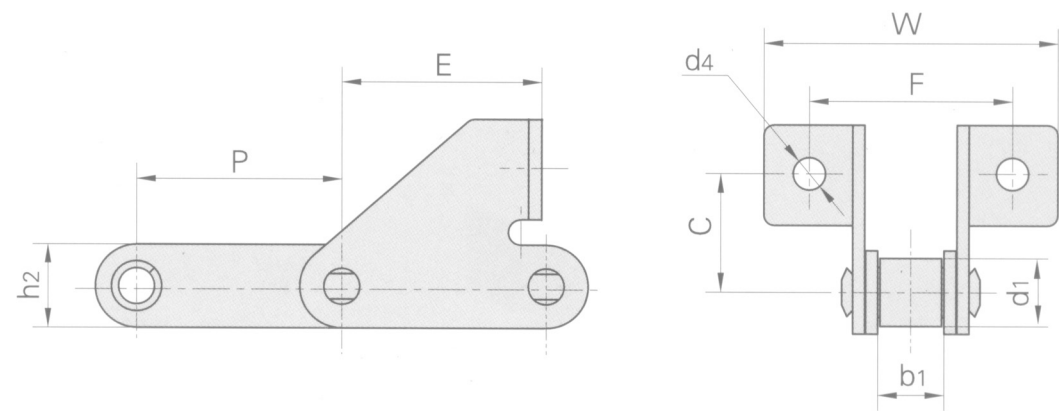


RAK CHAIN NO.	P	b1	C	E	F	W	d4	h2
	MM	MM	MM	MM	MM	MM	MM	MM
V52F2	41.40	22.23	17.00	28.60	58.0	81.2	8.5	17.3
V52F7	38.10	15.80	19.56	20.00	58.0	82.0	6.4	17.3

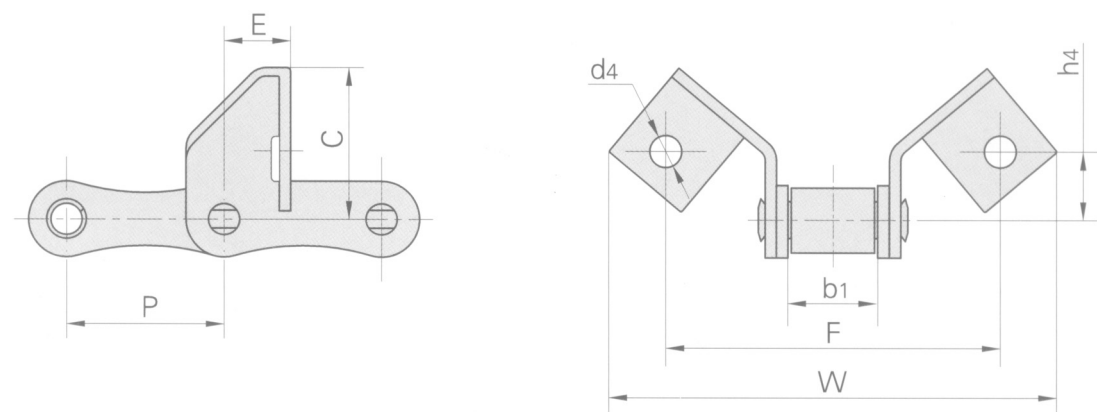
- We are manufacturers of engineering and special chains, for every type of industry.

- In the chain market, our products are of the highest quality, and are manufactured under the international standards ANSI B29.1 M-2002 (DIN 3183) and ISO 606.

V Type Chains With Attachments



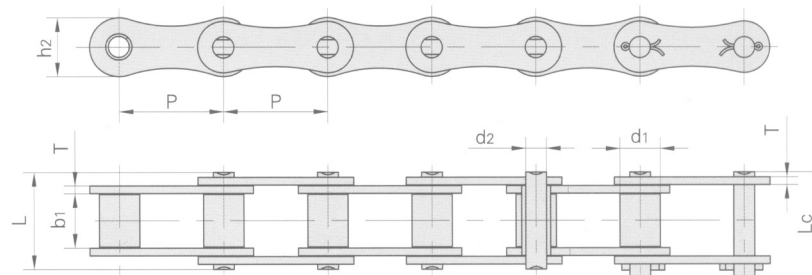
RAK CHAIN NO.	P	d1	b1	C	E	F	W	d4	h2
	MM	MM	MM	MM	MM	MM	MM	MM	MM
V52F3	38.40	15.88	18.50	24.00	37.4	52.0	73.0	8.7	17.5



RAK CHAIN NO.	P	b1	C	E	F	W	h4	d4
	MM	MM	MM	MM	MM	MM	MM	MM
55VSE	41.40	22.23	41.00	17.50	88.0	118.0	18.4	8.4
55SVEL	41.40	22.23	41.00	31.30	88.0	118.0	18.4	8.4

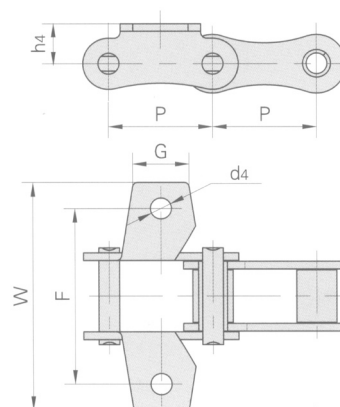
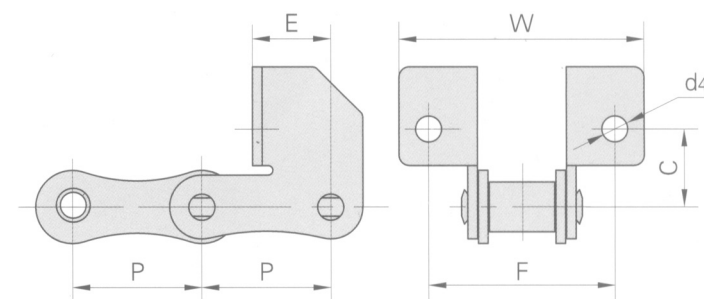


Special Agricultural Chains With Attachments



RAK CHAIN NO.	PITCH	ROLLER DIAMETER	WIDTH BETWEEN INNER PLATES	PIN DIAMETER	PIN LENGTH		PLATE DEPTH	PLATE THICKNESS	AVERAGE TENSILE STRENGTH
	P	d1 MAX	b1 MIN	d2 MAX	L MAX	Lc MAX	h2 MAX	T	
	MM	MM	MM	MM	MM	MM	MM	MM	LB
JA912	41.30	16.00	21.40	8.28	39.00	42.00	23.50	3.1	11980

RAK CHAIN NO.	P	C	E	F	W	d4
	MM	MM	MM	MM	MM	MM
JA912D	41.30	25.00	25.00	60.00	79.00	6.40

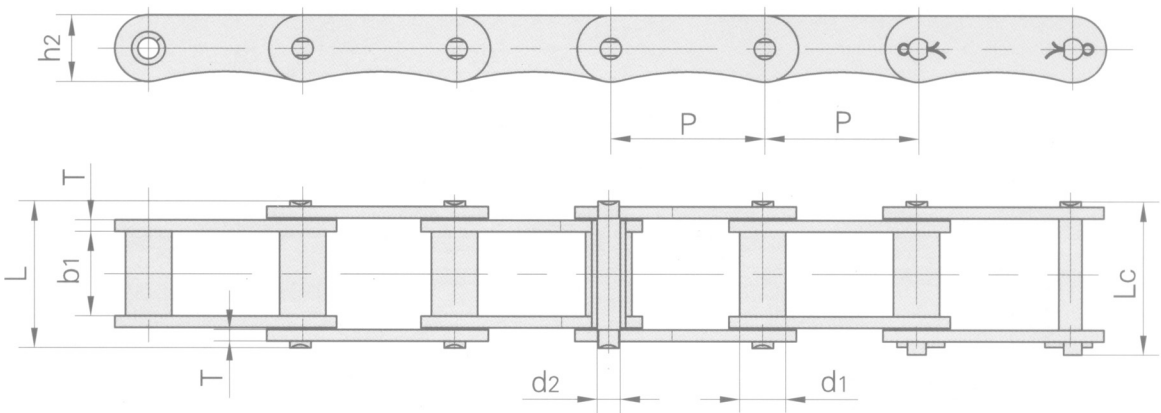


RAK CHAIN NO.	P	G	F	W	h4	d4
	MM	MM	MM	MM	MM	MM
JA91K1	41.30	22.00	70.50	91.30	16.00	8.40

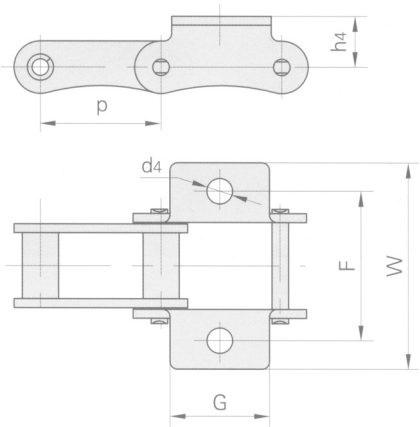
- We are manufacturers of engineering and special chains, for every type of industry.

- In the chain market, our products are of the highest quality, and are manufactured under the international standards ANSI B29.1 M-2002 (DIN 3183) and ISO 606.

Special Agricultural Chain With Attachments



RAK CHAIN NO.	PITCH	ROLLER DIAMETER	WIDTH BETWEEN INNER PLATES	PIN DIAMETER	PIN LENGTH		PLATE DEPTH	PLATE THICKNESS	AVERAGE TENSILE STRENGTH	WEIGHT PER METER
	P	d1 MAX	b1 MIN	d2 MAX	L MAX	Lc MAX	h2 MAX	T MAX		
	MM	MM	MM	MM	MM	MM	MM	MM	LB	KG/M
M27	40	12	22	6	38.2	41	17.5	3	7623	2.27

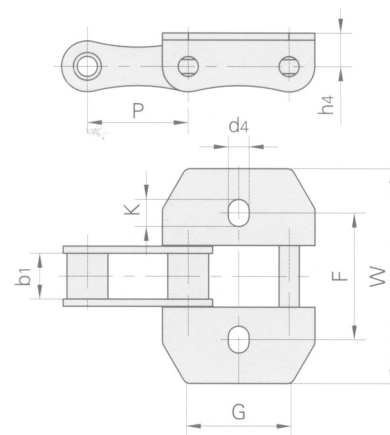


RAK CHAIN NO.	P	G	F	W	h4	d4
	MM	MM	MM	MM	MM	MM
M27K1	40	33	50	69	17	8.5

RAK

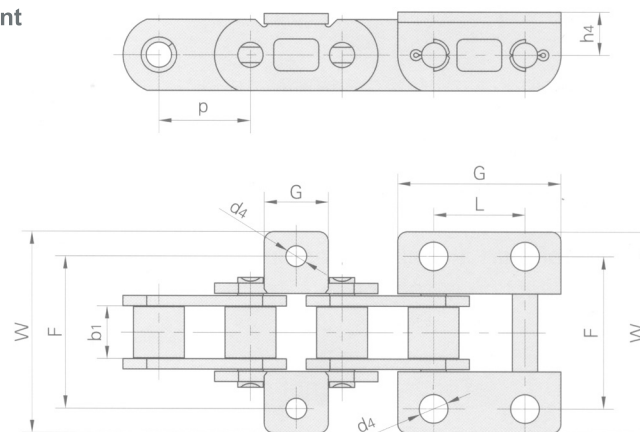
Special Agricultural Chains With Attachments

S1 - Attachment



RAK CHAIN NO.	P	b1	G	F	W	h4	d4	K
	MM	MM	MM	MM	MM	MM	MM	MM
CA642S103	41.10	19.00	40.00	53.00	89.60	8.40	8.5	11.25

S2 - Attachment



RAK CHAIN NO.	P	b1	L	G	F	W	h4	d4
	MM	MM	MM	MM	MM	MM	MM	MM
CA44151S1	28.575	16.20		20.00	47.00	61.00	13.00	6.5
CA44151S2	28.575	16.20	28.58	51.00	47.00	62.40	13.50	9.0

- We are manufacturers of engineering and special chains, for every type of industry.

- In the chain market, our products are of the highest quality, and are manufactured under the international standards ANSI B29.1 M-2002 (DIN 3183) and ISO 606.